



RWD132

WHEELDOZERS



More power and control mean more productivity



If you've got maximum productivity in mind, the RDL Series Wheel Dozers should be at the top of your list. But it's not just their big torque reserves that make them such impressive performers. Joystick control provide smooth, near-effortless control. Rhino hydraulics sense the load and deliver the flow needed for smooth combined functions and fast work cycles.



1. Control panel provides access to a machine info, brake and throttle pedals are conveniently positioned.
2. Joystick provides convenient operation, delivering smooth control, as well.
3. High quality hose products mean fewer hose changes. Rhino Equipment offers a broad line of high, medium and low-pressure hoses and couplings that are engineered and tested far beyond industry standards for top performance and long life.

ENGINE

| | |
|--------------------------------------|--|
| Model | Cummins / 6BTA5.9 or Rhino |
| Emissions (optional) | Tier 2(Tier 3, Tier 4) |
| Cylinders | 6 |
| Displacement L (cu. İn) | 5.9(360) |
| Net Power kW (Hp) @2,200rpm | 132(180) |
| Net Peak Torque Nm (lb-ft) @1,300rpm | 750(553) |
| Net Torque Rise | 17 % |
| Fuel System | Direct injection |
| Lubrication | Full-flow spin-on filter |
| Aspiration | Turbocharged, charged air cooled |
| Air Cleaner | Under-hood, dual element dry type, restriction indicator on filter housing for service |
| Fan Drive | Belt driven |
| Electrical System | 24 Volts with 70 Amp alternator |
| Batteries (2-12 volt) | 120A |

TRANSMISSION

| | |
|--|--|
| Type | Powershift |
| Torque Converter | Single-stage, dual phase, quad-element torque |
| Operator Interface | Steering column lever fro two gears forward and one in reverse |
| Shift Modes | Manual activation (4-Forward / 2-Reverse) |
| Max. Travel Speeds (with 20.5R 25 tires) | 45km/h / 28mph |

AXLES/BRAKES

| | |
|---|---------------------------------------|
| Final Drive | Heavy duty inboard-mounted planetary |
| Differentials | Helical bevel gear |
| Rear Axle Oscillation (with 20.5R 25 tires) | 22 degrees(11 degrees each direction) |
| Service Brakes | Air assisted, four wheels disk brake |
| Parking Brake | Manually activated, disk brake |

TIRES/WHEELS

20.5R 25

| REFILL CAPACITIES L (gal) | |
|--|----------|
| Fuel Tank | 200(53) |
| Cooling System | 17(4) |
| Engine Oil | 13.5(4) |
| Transmission Fluid | 45(12) |
| Axle Oil (Front and Rear, each) | 20(5) |
| Hydraulic Tank | 150(40) |
| Brake System (Front and Rear Booster Pump, each) | 1.5(0.4) |

HYDRAULIC SYSTEM/STEERING

| | |
|--|---|
| Pump (Loader and Steering) | Gear Pump, variable displacement, closed-center |
| Max. Rated Flow at 2,200 rpm L/min (gpm) | 115(30) |
| System Relief Pressure (Loader and Steering) Mpa (psi) | 17(2,466) |
| Loader Controls | Dual-multiway valve, joystick control |

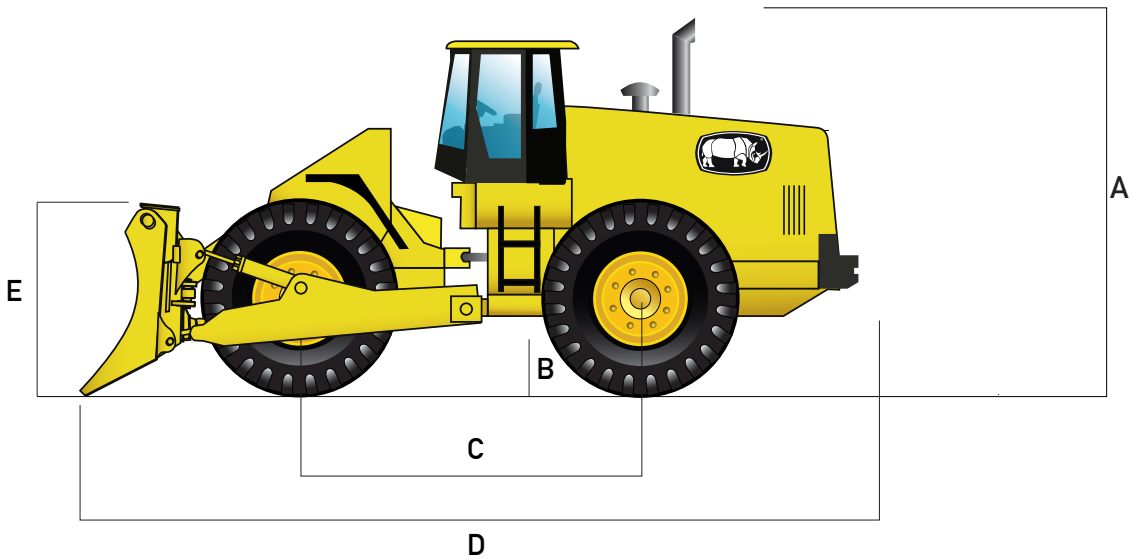
STEERING

| | |
|------------------------|------------------------------------|
| Type | Articulated frame, fully hydraulic |
| Articulation Angle | 35 degrees |
| Turning Radius mm (ft) | 6,400(20.9) |
| Hydraulic Cycle Times | Z-Bar |
| Raise sec. | 6.2 |
| Dump sec. | 3.8 |
| Lower sec. | 1.8 |
| Total sec. | 11.8 |

WEIGHTS

| | |
|--------------------------|----------------|
| Operating Weight kg (lb) | 13,000(28,660) |
|--------------------------|----------------|

Wheel Dozer operating information is based on machine with identified linkage and standard equipment, standard tires, full fuel tank, and 79-kg (175 lb.) operator. This information is affected by changes in tires, ballast, and different attachments.



DIMENSIONS WITH STRAIGHT TILT BLADE

| | |
|--|-------------|
| A. Overall Height mm (ft) | 3,340(10.9) |
| B. Ground Clearance mm (ft) | 400(1.3) |
| C. Wheel Base mm (ft) | 3,400(11.1) |
| D. Overall Length mm (ft) | 7,130(23.3) |
| E. Blade Height mm (ft) | 1,350(4.4) |
| Blade Width mm (ft) | 3,300(10.8) |
| Blade Lift Height mm (in) | 1,030(40.6) |
| Blade Digging Depth mm (in) | 370(14.6) |
| Blade Cutting-Edge Angle | 55 degrees |
| Blade Capacity m ³ (cu. Yd) | 3.0(3.9) |
| Blade Tilt mm (in) | 450(17.7) |

Equipment specifications and images may change without notice from Rhino Equipment®

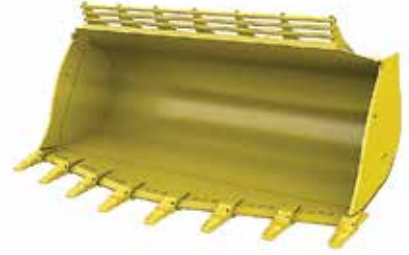
ATTACHMENTS



Material Handling Bucket



Waste Bucket



Rock Bucket



Slag Bucket



Multi-Purpose Bucket



Multi-Purpose Blades



Grapple Forks



Lumber Forks



Palet Forks

The attachments shown are for reference only; the final product may be different from the images shown.

For more options contact your nearest dealer.

Equipment specifications and images may change without notice from Rhino Equipment®