



RMU-T20

UNDERGROUND MINING TRUCK





Designed for high-capacity hauling, built with precision

The Rhino RMU-T20 Underground Mining Truck is engineered with advanced features that maximize productivity, increase uptime, and reduce operating costs in demanding underground mining operations. A high-performance powertrain, heavy-duty optimized transmission, and operator-focused controls enable faster haul cycles and exceptional material transport efficiency.



1. Climate-control system with automotive-style adjustable louvers helps keep windows clear and the cab comfortable.
2. Advanced LCD monitor provides intuitive access to a wide range of operational data, diagnostics, and machine functions.
3. Ergonomically positioned controls deliver smooth and predictable handling, reducing operator effort while ensuring precise response during hauling operations.

ENGINE AND POWERTRAIN

| | |
|---|--|
| Engine model | RHINO RMUT 256T / Volvo TAD853VE |
| Gross power - VR / Tier 3 kW (HP) @ rpm | 256 (343) / 235 (315) @ 2,200 |
| Displacement L (in ³) | 7.7 (470) |
| Emission standard | Euro Stage III |
| Peak torque N·m (lb-ft) @ rpm | 1,426 (1,052) / 1,310 (966) @ 1,450 |
| Transmission type | Automatic hydrodynamic |
| Transmission model / Torque converter | Dana 36000 Transmission / Dana C5000 Converter |
| Number of gears (Forward / Reverse) | 4 Forward / 4 Reverse |
| Automatic lock-up torque converter | Yes (Torque converter) |
| Max speed 1st gear km/h (mph) | 4.5 (2.8) |
| Max speed 2nd gear km/h (mph) | 9.0 (5.6) |
| Max speed 3rd gear km/h (mph) | 16.0 (9.9) |
| Max speed 4th gear km/h (mph) | 25.0 (15.5) |

CAPACITIES AND PERFORMANCE

| | |
|--|---------------------|
| Rated capacity kg (lb) | 20,000 (44,092) |
| Standard hopper capacity m ³ (yd ³) | 10.0 (13.1) |
| Ejector hopper capacity m ³ (yd ³) | 9.8 (12.82) |
| Empty operating weight - Other engines kg (lb) | 22,600 (49,824) |
| Maximum gross machine weight kg (lb) | 45,200 (99,649) |
| Hydraulic cycle time - (s) | 24.5 (Total) |
| Maximum gradeability - Loaded % | 25% (Standard ramp) |
| Hopper raise time (s) | 10.5 |
| Hopper lower time (s) | 14.0 |
| Load control (Ride control) | No (Optional) |
| Approach / departure angle | 14° |



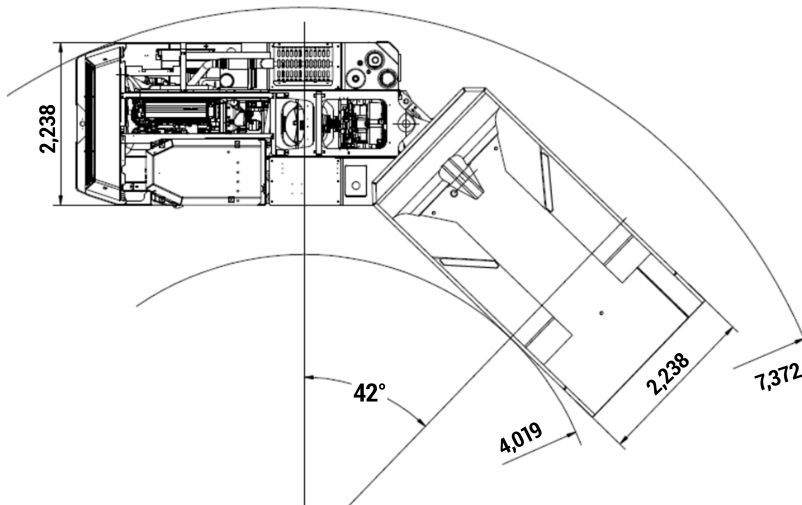
Equipment specifications and images may change without notice from Rhino Equipment®

AXLES, STEERING AND WHEELS

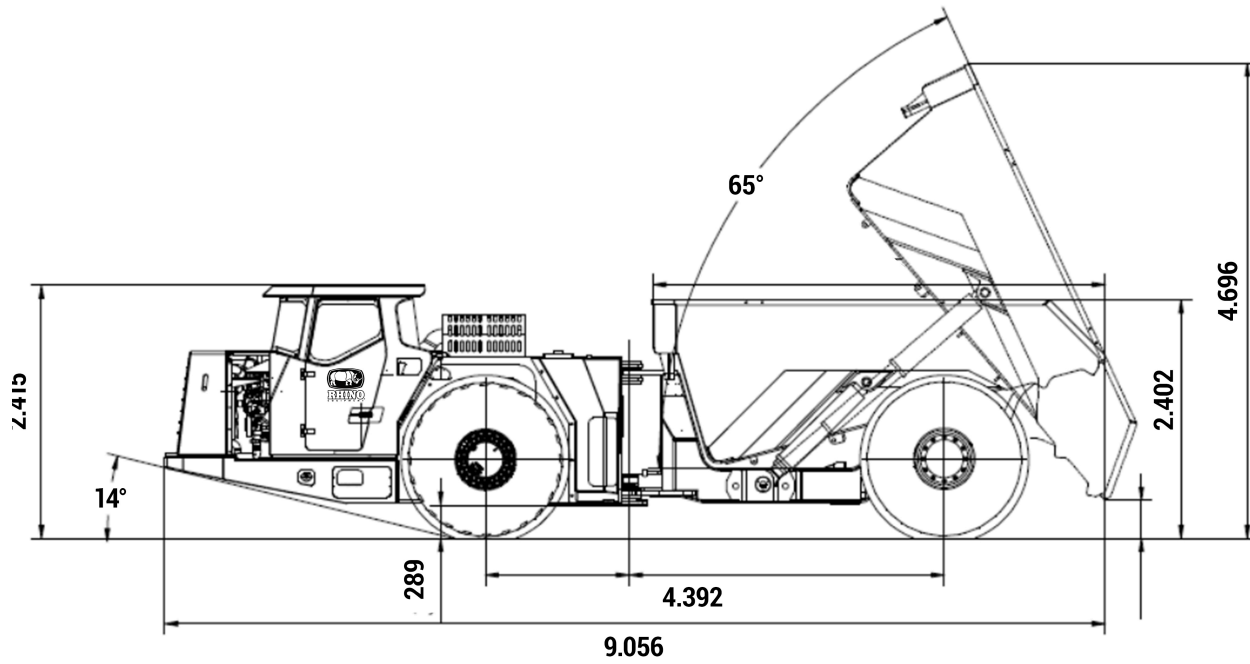
| | |
|--|------------------------------|
| Front and rear axles | Oscillating front axle: Yes |
| Axle manufacturer / Model (Front and Rear) | Dana 19D Axles |
| Differential | Standard |
| Service brake system (Type) | Hydraulic SAHR |
| Retarder capacity kW (HP) | ARC Retarder: Not documented |
| Articulation angle ° | 44° |
| Oscillation angle ° | 10° |
| External turning radius mm (ft) | 7,372 (24.19) |
| Internal turning radius mm (ft) | 4,019 (13.19) |
| Tires (in) | 18.00 × R25 |

HYDRAULIC SYSTEM AND REFILL L (gal)

| | |
|--|---|
| Hydraulic cylinder configuration | 2 Double-acting steering cylinders + 2 Body hoist cylinders |
| Main pump flow L/min (gpm) | 144 (38) |
| System relief pressure bar (psi) | 214 (3,103) |
| Hydraulic pump type | Gear Pump |
| Fuel tank L (gal) | 370 (97.7) |
| DEF / AdBlue tank (Stage V engines) L (gal) | Optional |
| Hydraulic tank L (gal) | 370 (97.7) |
| Engine oil pan with filter L (gal) | 34 (9.0) |
| Cooling system | Water (Liquid) |
| Transmission L (gal) | 44 (11.6) |
| Front differentials and final drives L (gal) | 37 (9.8) |
| Rear differentials and final drives L (gal) | 41 (10.8) |



Equipment specifications and images may change without notice from Rhino Equipment®



OVERALL DIMENSIONS mm (in)

| | |
|---|--|
| Cab certifications (ROPS ISO 3471 / FOPS ISO 3449) | Enclosed cab A/C/ROPS |
| Cab safety equipment | Laminated safety glass + Integrated emergency exit |
| Height - Top of empty hopper mm (in) | 2,402 (94.6) |
| Height - Top of ROPS mm (in) | 2,415 (95.1) |
| Height - Hopper load line (Std) mm (in) | 2,274 (89.5) |
| Ground clearance mm (in) | 289 (11.4) |
| Length - Maximum overall mm (in) | 9,056 (356.5) |
| Length - Wheelbase mm (in) | 4,392 (172.9) |
| Width - Machine with standard hopper mm (in) | 2,238 (88.1) |
| Maximum height with hopper fully raised mm (in) | 4,696 (184.9) |
| Maximum dump / discharge angle ° | 65° |
| Minimum working tunnel cross-section (W x H) m (ft) | 4.5 x 4.5 (14.8 x 14.8) |

Equipment specifications and images may change without notice from Rhino Equipment®