



REX330

EXCAVADORA



Unprecedented precision and ease of operation.



This Rhino excavator is loaded with enhancements that not only increase productivity and uptime, but lower daily operating costs, too. A high-efficiency “on-demand” cooling system, advanced multifunction monitor, and productivity modes to allow you to choose your digging style headline the long list of advances.



1. Level climate-control system with automotive-style adjustable louvers helps keep the glass clear and the cab comfortable.
2. LCD monitor provide intuitive access to a wealth of information and functions.
3. Ergonomically correct short-throw pilot levers provide smooth, predictable fingertip control with less movement or effort.

ENGINE

Engine Make / Engine Model	Cummins 6BTAA5.9 / Isuzu 6BG1TRP or Rhino
Emissions (optional)	Tier2(Tier3, Tier4)
Number of Cylinders	6
Displacement L (cu. in)	5.9(360)
Net Power kW (Hp) @2,000rpm	241(323)
Fuel System	Direct Injection
Aspiration	Turbocharged, air-to-air charge air cooler

COOLING

Fan Drive	Belt driven
-----------	-------------

POWERTRAIN

Type	Dual speed mode for tracks on-dash one-button activation
Max. Travel Speeds	5,2(3.2)
Low	3,3(2)
High	5,2(3.2)

HYDRAULICS

Type	Open center, load sensing, two variable-displacement axial piston pumps
Pressure Mpa (psi)	31(4,554)
Max. Flow L/min (gpm) (each)	226(60)
Power Boost Map (psi)	34(4,975)
Control	Pilot levers, low-effort hydraulic controls with horn and boost buttons

CYLINDERS	Bore	Rod Diameter	Stroke
Boom (2) mm (in)	140(5.5)	100(3.9)	1,610(63.4)
Arm (1) mm (in)	170(6.7)	120(4.5)	1,820(71.7)
Bucket (1) mm (in)	140(5.5)	100(3.9)	1,610(63.4)

Equipment specifications and images may change without notice from Rhino Equipment Group Inc.

ELECTRICAL

Number of Batteries	2
Voltage	24 Volts
Alternator Rating / optional	70A/ 120A
Lights	5 Front lights, 1 Rear light

UNDERCARRIAGE

Carrier Rollers (each side)	2
Track Rollers (each side)	7
Shoes (each side) Triple Semi-Grousers	45
Max. Drawbar Pull kg (lb)	25,400(55.997)

Track	
Adjustment	Hydraulic
Guides	Front Idler
Chain	Sealed and lubricated

GROUND PRESSURE

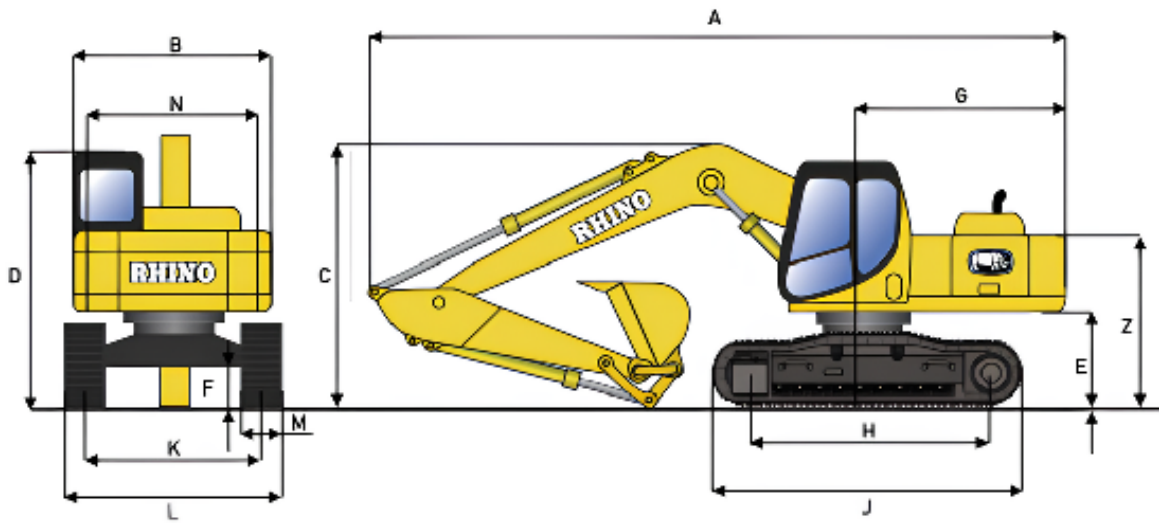
Triple Semi-Grouser (700mm) (28in)	61(8.8)
------------------------------------	---------

SWING MECHANISM

Speed rpm	10.6
Torque Nm (lb-ft)	79,670(58.762)

REFILL CAPACITIES L (gal)

Fuel Tank / optional	595(157) / 630(166)
Cooling System	20,6(5)
Engine Oil	23(6)
Hydraulic Tank	310(82)
Swing Mechanism	8,2(2.2)
Final Drive Case (each)	8,5(2.2)



OPERATING WEIGHTS

With full fuel tank: 79 kg (175 lb) operator; 1.0 m³ (1.3 cu. Yd) general purpose bucket; 700mm (28in) shoes; and 3,050 mm (10ft) arm

Base Weight kg (lb) / optional 33,000 (72,753) / 34,000(74,957)

PERFORMANCE PARAMETERS

Gradeability (%) 70

MACHINES DIMENSIONS

Bucket Capacity m³ (cu.Yd) 1,4-1,6(1.8-2.1)

Arm Length mm (ft) 3,185 (10.4)

Boom m (ft) 6,47(21.2)

A - Overall Length mm (ft) 11,150(36.6)

B - Overall Width mm (ft) 3,190(10.5)

C - Total Height (Boom top) mm (ft) 3,180(10.4)

D - Total Height (Cap top) mm (ft) 3,280(10.8)

E - Counterweight Ground Clearance mm (ft) 1,210(4)

F - Min. Ground Clearance mm (ft) / optional 498(1.6) / 500 (1.6)

G - Turning Radius of Vehicle Tail mm (ft) 3,420(11.2)

H - Track Length on the Ground mm (ft) 3,700(12.1)

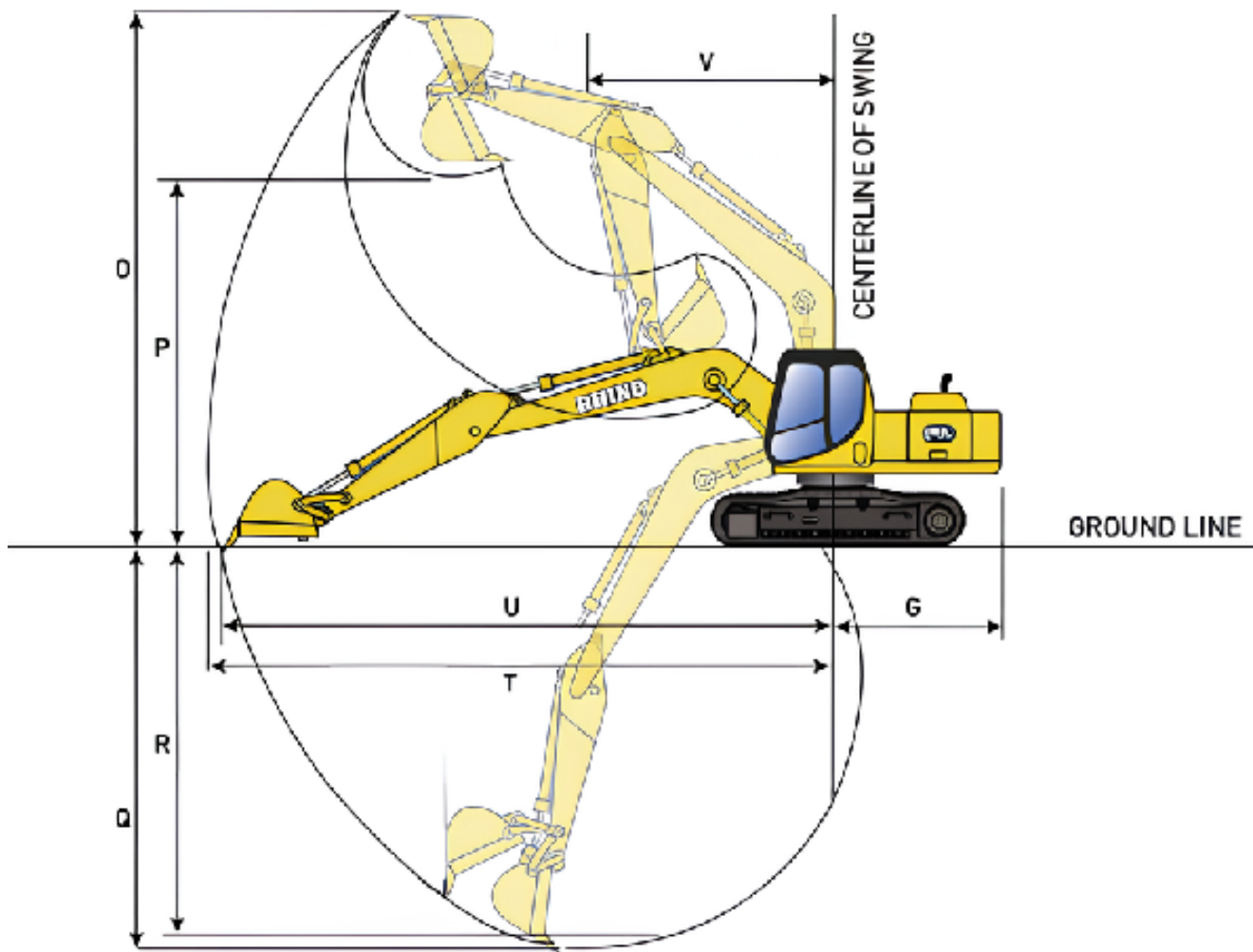
J - Track Shoe Length mm (ft) 4,622(15.2)

K - Track Gauge mm (ft) 2,590(8.5)

L - Track Width mm (ft) 3,190(10.5)

M - Track Shoe Width mm (ft) 600(2)

N - Swing Frame Width mm (ft) 2,995(9.8)



OPERATING RANGE

O - Max. Digging Height mm (ft)	10,200 (33.5)
P - Max. Dumping Height mm (ft)	7,135 (23.4)
Q - Max. Digging Depth mm (ft)	7,370 (24.2)
R - Max Vertical Wall Digging Depth mm (ft)	6,380 (20.9)
T - Max. Digging Reach mm (ft)	11,100 (36.4)
U - Max. Digging Reach at Ground Level mm (ft)	10,910 (35.8)
V - Min. Swing Radius mm (ft)	4,265 (14)
W - Max. Height at Min. Swing Radius mm (ft)	8,500 (27.9)
X - Distance from Swing Center to Tail mm (ft)	3,420 (11.2)
Z - Counterweight Height mm (ft)	2,265 (7.4)
A1 - Ground Length (During Transporting) mm (ft)	5,750 (18.9)

Equipment specifications and images may change without notice from Rhino Equipment Group Inc.

ATTACHMENTS

Rhino Excavators come standard with the hydraulic line for attachments. Attachments include hydraulic hammers, thumb cutters, and many more.

Rhino Hydraulic Hammer Match: 2735EX



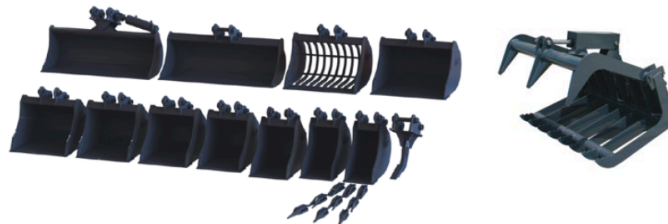
Rhino Excavators can come with different types of buckets depending on work requirements

OPTIONS

Rhino Excavators can come with different options like: Tier2, Tier3, Tier4 Engine, Close cab, Rock bucket, Trench bucket, Thumb cutters, and many more according to work requirements.

ATTACHMENTS

Rhino Excavators come standard with hydraulic line for attachments.



Many options buckets



Hydraulic Hammers



Trenchers



Augers

and many more...