



# RC70

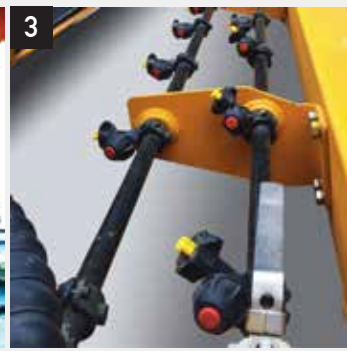
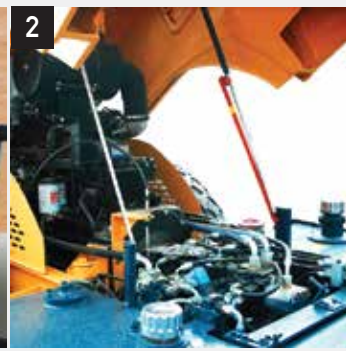
COMPACTORS



# Flat-out value proven productivity, reliability, durability.



A machine needs to work to earn its keep. Rhino Equipment Vibratory Soil Compactors are well equipped to perform a wide range of applications. Options like padfoot shell kits, leveling blades and Rhino's dual vibration system add capability, making your Rhino Vibratory Soil Compactor the machine of choice no matter what the application requires.



1. Operating station adjusts to suit operator comfort, and the console provide fingertip access to machine features and operating information.
2. Reliable and durable Rhino engine.
3. More coverage, and easier access: That summarizes the water spray system on Rhino Compactors. The result is less material pickup, and increased uptime for your crew.

<b>OPERATING WEIGHT</b>	
Machine with Cab kg (lb)	7,000(15.432)
Weight at the Drum with Cab kg (lb)	4,900(10,803)
Weight at the Rear Axel with Cab kg (lb)	2,100(4.630)
Operating Weight with Drum Drive System kg (lb)	7,200(15,873)
Operating Weight with Drum Drive System and Pad Foot kg (lb)	8,130(17.924)
Static Linear Load N/m (ft-lbf)	210(154.9)
<b>VIBRATORY SYSTEM</b>	
Max. Frequency Hz (vpm)	43(2.58)
Nominal Amplitude @ Max. Frequency	
High mm (in)	1,6(0.06)
Centrifugal Force	
High kN (lbf)	70(15.74)
<b>POWERTRAIN</b>	
Engine Make / Model	Cummins 4BT3.9
Net Power kW (Hp) @2,500 rpm	75(100.6)
Displacement L (cu. In)	3,2(195)
Peak Torque Nm (ft-lb) @1,800rpm	195(144)
Emissions Rating (optional)	Tier 2 (Tier 3, Tier 4)
Fuel System	Direct injection
Lubrication	Full-flow spin-on filter
Aspiration	Natural
Air Cleaner	Under-hood, dual element dry type
Fan Drive	Belt driven
Electrical System	24 volts with 70 Amp alternator
Axle	Limited slip with planetary reduction
Tire	16-24 14 Ply
Oscillation Angle of Vibration Drum (°)	18
<b>TRANSMISSION</b>	
Type	Hydrostatic, closed center, constant-meshing gearing
Travel Speed kph (mph)	10(6.21)

## HYDRAULIC SYSTEM

Pump Type	Piston pump, variable displacement, closed center
System Pressure Mpa (psi)	28(4.061)
Vibration System Pressure Mpa (psi)	12(1.740)
Steering System Pressure Mpa (psi)	8(1.160)

## BRAKE SYSTEM

Service Brake	Pneumatically assisted, hydraulically actuated, two wheels disk brake, dynamic braking whenever the direction control lever is moved to the neutral position
Parking Brake	Manually activated, disk brake mounted on transmission output shaft

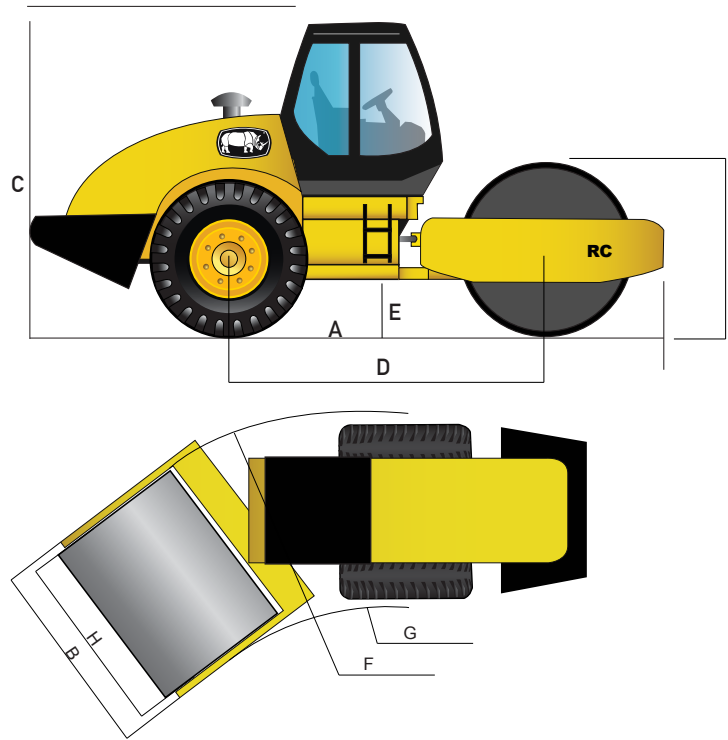
## REFILL CAPACITIES L (gal)

Fuel Tank	85(22)
Engine Oil	9(2)
Hydraulic Tank	95(25)
Gear Box	1(0.3)
Axle Oil	6(2)
Brake System	0.5(0.1)
Vibration Drum (both sides, each)	4(1)

Compactor operating information is based on machine with identified linkage and standard equipment, full fuel tank, and 79-kg (175 lb) operator. This information is affected by changes in type of drums, ballast and different attachments.

Equipment specifications and images may change without notice from Rhino Equipment Group Inc.





## MACHINE DIMENSIONS

A. - B. Overall Dimension mm (ft)	5030x1880x2570(16.5x6.2x8.4)
C. Max. Machine Height mm (ft)	2,830(9.3)
D. Wheelbase mm (ft)	2,684(8.8)
E. Min. Ground Clearance mm (ft)	280(0.9)
F. Turning Radius mm (ft)	6,000(19.7)
G. Articulation Angle (°)	30
Gradeability (%)	25

## DRUM DIMENSIONS

H. Drum Width mm (in)	1,700(66.9)
I. Drum Diameter mm (in)	1,220(48.0)
Drum Shell Thickness mm (in)	25(1.0)
Max. Ascent Capacity without Vibration	60 %
Max. Ascent Capacity with Vibration	50 %

## OPTIONS

ROPS/FOPS Cab, A/C, Pressurized Water Spray System, Drum Drive System, Pad Foot, Dozer Blade, Tier 3, Tier 4 Engine

Equipment specifications and images may change without notice from Rhino Equipment Group Inc.