



RWD132

WHEELOZERS



More power and control mean more productivity.



If you've got maximum productivity in mind, the RDL Series Wheel Dozers should be at the top of your list. But it's not just their big torque reserves that make them such impressive performers. Joystick control provide smooth, near-effortless control. Rhino hydraulics sense the load and deliver the flow needed for smooth combined functions and fast work cycles.



1. Control panel provides access to a machine info, brake and throttle pedals are conveniently positioned.
2. Joystick provides convenient operation, delivering smooth control, as well.
3. High quality hose products mean fewer hose changes. Rhino Equipment offers a broad line of high, medium and low-pressure hoses and couplings that are engineered and tested far beyond industry standards for top performance and long life.

ENGINE

Model	Cummins / 6BTA5.9 or Rhino
Emissions (optional)	Tier 2(Tier 3, Tier 4)
Cylinders	6
Displacement L (cu. İn)	5.9(360)
Net Power kW (Hp) @2,200rpm	132(180)
Net Peak Torque Nm (lb-ft) @1,300rpm	750(553)
Net Torque Rise	17 %
Fuel System	Direct injection
Lubrication	Full-flow spin-on filter
Aspiration	Turbocharged, charged air cooled
Air Cleaner	Under-hood, dual element dry type, restriction indicator on filter housing for service
Fan Drive	Belt driven
Electrical System	24 Volts with 70 Amp alternator
Batteries (2-12 volt)	120A

TRANSMISSION

Type	Powershift
Torque Converter	Single-stage, dual phase, quad-element torque
Operator Interface	Steering column lever fro two gears forward and one in reverse
Shift Modes	Manual activation (4-Forward / 2-Reverse)
Max. Travel Speeds (with 20.5R 25 tires)	45km/h / 28mph

AXLES/BRAKES

Final Drive	Heavy duty inboard-mounted planetary
Differentials	Helical bevel gear
Rear Axle Oscillation (with 20.5R 25 tires)	22 degrees(11 degrees each direction)
Service Brakes	Air assisted, four wheels disk brake
Parking Brake	Manually activated, disk brake

TIRES/WHEELS

20.5R 25

REFILL CAPACITIES L (gal)	
Fuel Tank	200(53)
Cooling System	17(4)
Engine Oil	13.5(4)
Transmission Fluid	45(12)
Axle Oil (Front and Rear, each)	20(5)
Hydraulic Tank	150(40)
Brake System (Front and Rear Booster Pump, each)	1.5(0.4)

HYDRAULIC SYSTEM/STEERING

Pump (Loader and Steering)	Gear Pump, variable displacement, closed-center
Max. Rated Flow at 2,200 rpm L/min (gpm)	115(30)
System Relief Pressure (Loader and Steering) Mpa (psi)	17(2,466)
Loader Controls	Dual-multiway valve, joystick control

STEERING

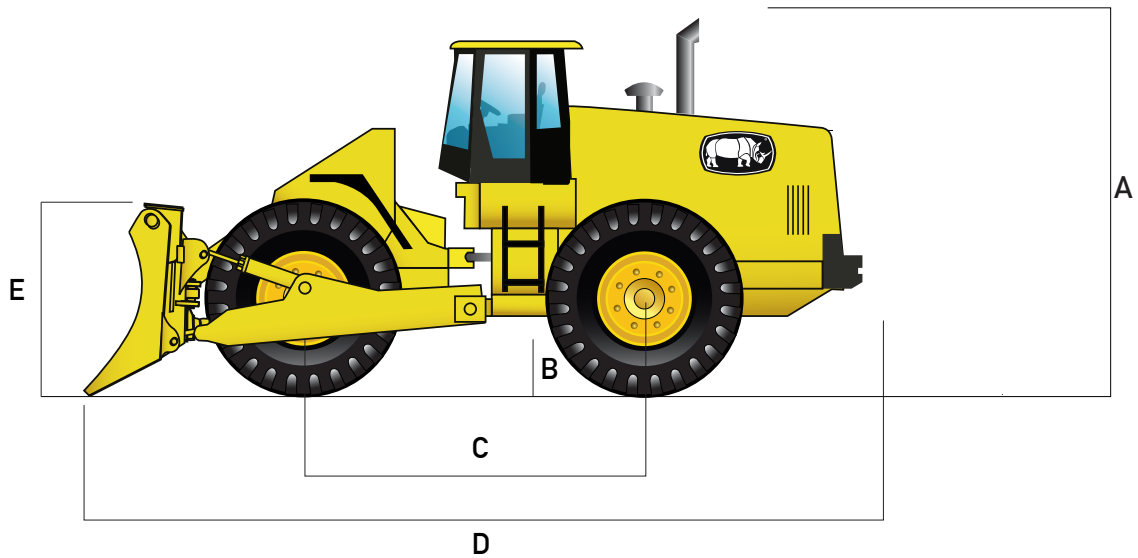
Type	Articulated frame, fully hydraulic
Articulation Angle	35 degrees
Turning Radius mm (ft)	6,400(20.9)
Hydraulic Cycle Times	Z-Bar
Raise sec.	6.2
Dump sec.	3.8
Lower sec.	1.8
Total sec.	11.8

WEIGHTS

Operating Weight kg (lb)	13,000(28,660)
--------------------------	----------------

Wheel Dozer operating information is based on machine with identified linkage and standard equipment, standard tires, full fuel tank, and 79-kg (175 lb.) operator. This information is affected by changes in tires, ballast, and different attachments.

Equipment specifications and images may change without notice from Rhino Equipment Group Inc.



DIMENSIONS WITH STRAIGHT TILT BLADE

A. Overall Height mm (ft)	3,340(10.9)
B. Ground Clearance mm (ft)	400(1.3)
C. Wheel Base mm (ft)	3,000(9.8)
D. Overall Length mm (ft)	7,130(23.3)
E. Blade Height mm (ft)	1,350(4.4)
Blade Width mm (ft)	3,823(12.5)
Blade Lift Height mm (in)	1,030(40.6)
Blade Digging Depth mm (in)	370(14.6)
Blade Cutting-Edge Angle	55 degrees
Blade Capacity m ³ (cu. Yd)	3.0(3.9)
Blade Tilt mm (in)	450(17.7)

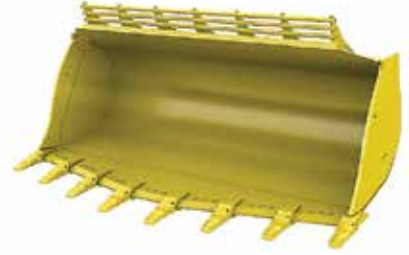
ATTACHMENTS



Material Handling Bucket



Waste Bucket



Rock Bucket



Slag Bucket



Multi-Purpose Bucket



Multi-Purpose Blades



Grapple Forks



Lumber Forks



Palet Forks



The attachments shown are for reference only; the final product may be different from the images shown.

For more options contact your nearest dealer.

Equipment specifications and images may change without notice from Rhino Equipment Group Inc.