

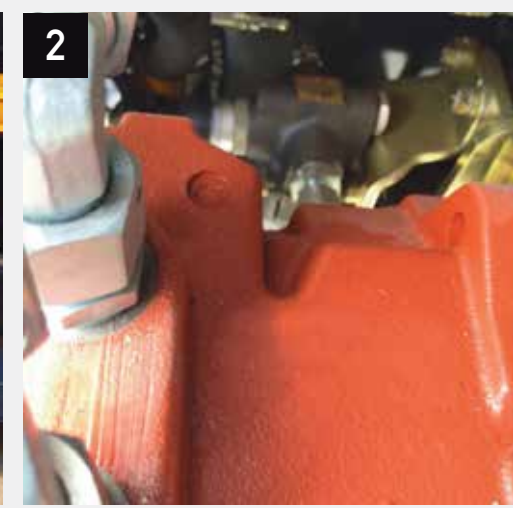
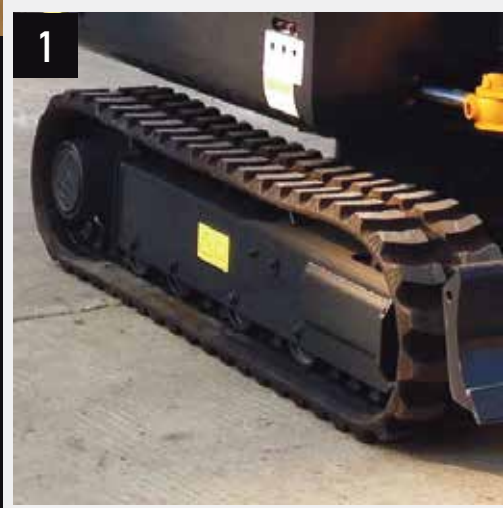


REX35

EXCAVATOR



Unprecedented precision and ease of operation.



This Rhino excavator is loaded with enhancements that not only increase productivity and uptime, but lower daily operating costs, too. A high-efficiency “on-demand” cooling system, advanced multifunction monitor, and productivity modes to allow you to choose your digging style headline the long list of advances.

1. The standard rubber track lets you work on multiple surfaces such as grass, pavement or stone without damaging the surface or machine.
2. Generous flow, and swing torque help speed cycles. So you can do your best to stay on schedule or ahead of the weather.
3. Reliable and durable Yanmar diesel engine, more efficient with low maintenance costs.

ENGINE

Engine Make / Engine Model	Rhino (Yanmar 4TNV88-BSBKC)
Emissions (optional)	Tier3(Tier2, Tier4)
Cylinders	4
Displacement L (cu. In)	2,2(134)
Net Power kW (Hp) @2,350 rpm	25(34)
Fuel System	Direct Injection
Aspiration	Naturally Aspirated

COOLING

Fan Drive	Belt Driven
-----------	-------------

POWERTRAIN

Type	Dual speed mode for tracks on-dash one-button activation
Max. Travel Speeds	
Low	2,7(1.7)
High	4,0(2.5)

HYDRAULICS

Type	Open center, load sensing, two variable-displacement axial piston pumps
Pressure Mpa (psi)	24,5(3.553)
Max. Flow L/min (gpm) (each)	46(12)
Power Boost Mpa (psi)	25(3.553)
Control	2 Pilot levers, low-effort hydraulic controls with horn and boost buttons

CYLINDERS	Bore	Rod Diameter	Stroke
Boom (2) mm (in)	75(3.0)	40(1.6)	550(21.7)
Arm (1) mm (in)	75(3.0)	45(1.8)	605(23.8)
Bucket (1) mm (in)	70(2.8)	40(1.6)	510(20.1)

ELECTRICAL

Alternator Rating	50A
Lights	2 Front lights, 1 Rear light

Equipment specifications and images may change without notice from Rhino Equipment Group Inc.

UNDERCARRIAGE

Carrier Rollers (each side)	1
Track Rollers (each side)	4
Track Width mm (in)	350(13.8)
Adjustment	Hydraulic
Guides	Front Idler
Chain	Sealed and lubricated

GROUND PRESSURE

Rubber Track (350mm) (13.8in) Kpa (psi)	36(5.2)
---	---------

SWING MECHANISM

Speed rpm	12
-----------	----

REFILL CAPACITIES L (gal)

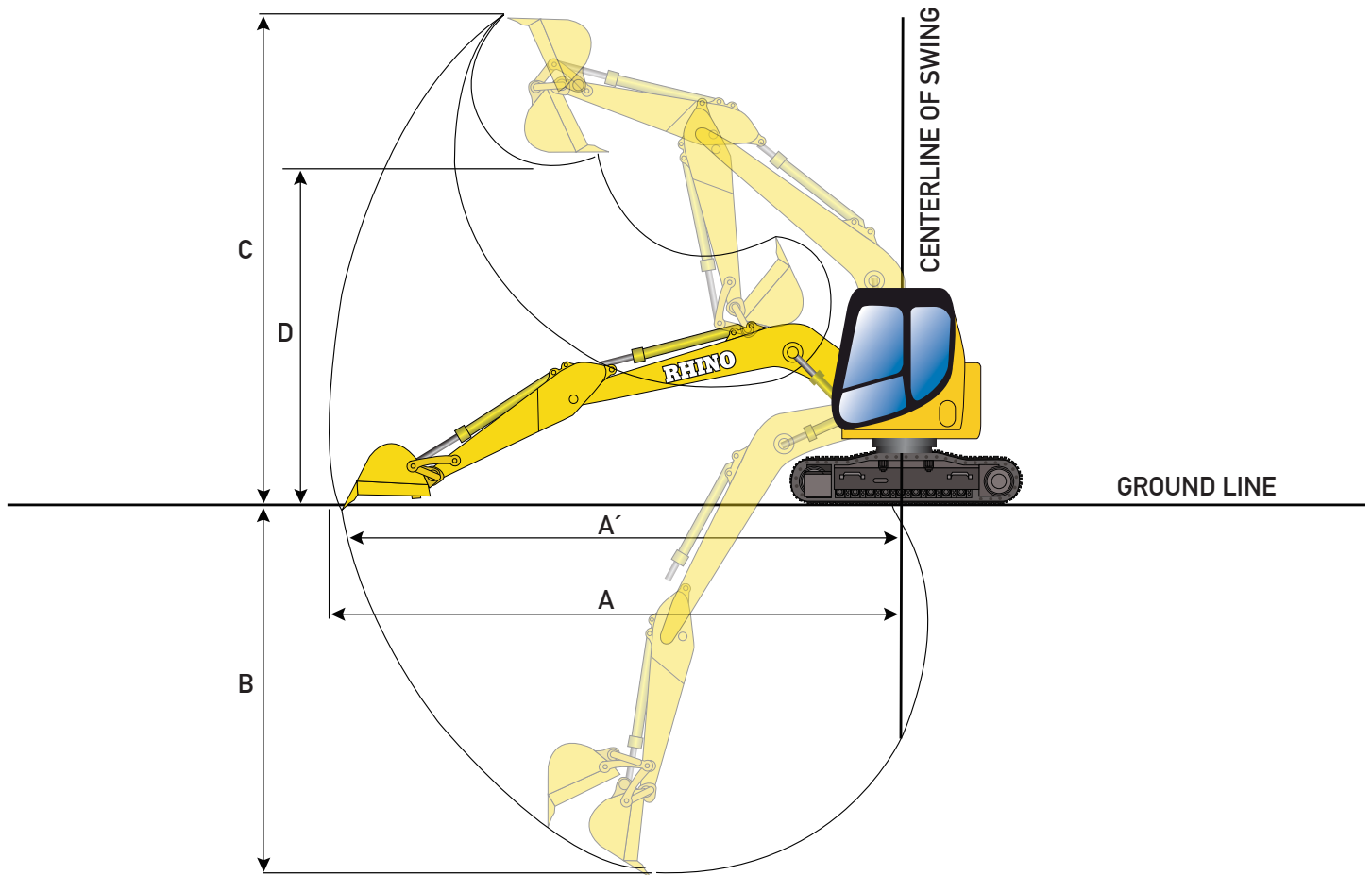
Fuel Tank	82(22)
Cooling System	5(1)
Engine Oil	7.4(2)
Hydraulic Tank	90(24)

OPERATING WEIGHTS

With full fuel tank, 79kg (175lb) operator, 0.17m³ (0.22cu.Yd) general purpose bucket, 350mm (13.8in) tracks and 1,450mm (4.8ft) arm

Base Weight kg (lb)	4,200(9.259)
---------------------	--------------

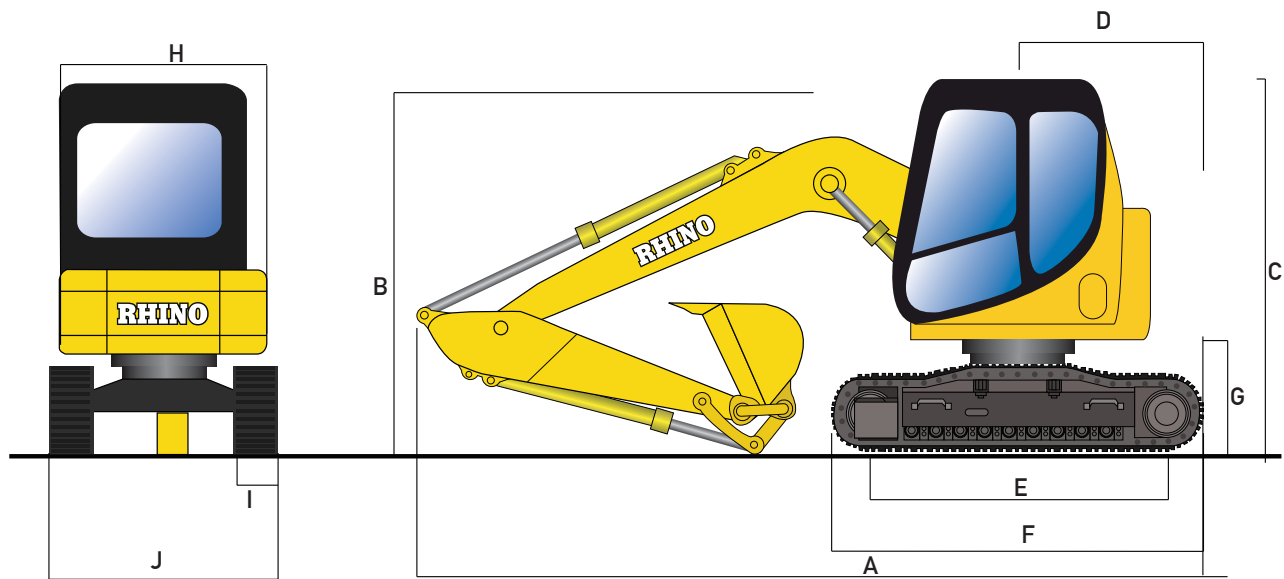
Equipment specifications and images may change without notice from Rhino Equipment Group Inc.



OPERATING DIMENSIONS

Arm Length mm (ft)	1,450(4.8)
Arm Digging Force kN (lb)	19(4.159)
Bucket Digging Force kN (lb)	23,7(5.328)
A. Max. Reach mm (ft)	5,530(18.1)
A'. Max. Reach at Ground Level mm (ft)	5,420(17.8)
B. Max. Digging Depth mm (ft)	3,076(10.1)
C. Max. Cutting Height mm (ft)	5,030(16.5)
D. Max. Dumping Height mm (ft)	3,410(11.2)
Min. Swing Radius mm (ft)	2,185(7.2)

Equipment specifications and images may change without notice from Rhino Equipment Group Inc.



MACHINE DIMENSIONS

A. Overall Length mm (ft)	5,500(18.0)
B. Overall Height mm (ft)	1,861(6.1)
C. Overall Height to Top of Cab mm (ft)	2,455(8.1)
D. Swing Radius mm (ft)	1,600(5.2)
E. Length of Track on Ground mm (ft)	1,710(5.6)
F. Undercarriage Length mm (ft)	1,600(5.2)
G. Counterweight Clearance mm (ft)	2,190(7.2)
H. Upper-structure Width mm (ft)	1,640(5.4)
I. Track Width mm (in)	350(13.8)
J. Undercarriage Width mm (ft)	1,750(5.7)
Min. Ground Clearance mm (in)	350(13.8)
Overall Length, Transport	3,353(11.0)

ATTACHMENTS

Rhino Excavators come standard with the hydraulic line for attachments, they include hydraulic hammers and many more.

Rhino Hydraulic Hammer Match: 254SK

OPTIONS

Rhino Excavators can come with different options like: Rhino engine, Perkins engine, Tier2, Tier4 engine, rock bucket, trench bucket, steel tracks, augers, thumb cutters and many more according to work requirements.