



REX130

EXCAVATOR



Unprecedented precision and ease of operation.



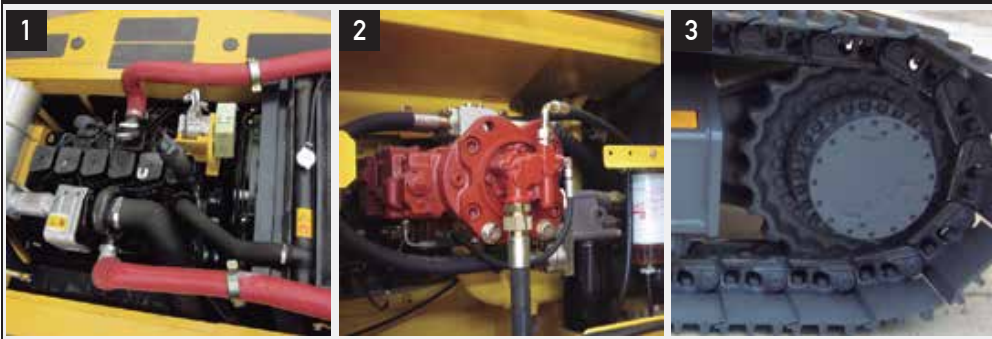
This Rhino excavator is loaded with enhancements that not only increase productivity and uptime, but lower daily operating costs, too. A high-efficiency “on-demand” cooling system, advanced multifunction monitor, and productivity modes to allow you to choose your digging style headline the long list of advances.



1. Level climate-control system with automotive-style adjustable louvers helps keep the glass clear and the cab comfortable.
2. LCD monitor provide intuitive access to a wealth of information and functions.
3. Ergonomically correct short-throw pilot levers provide smooth, predictable fingertip control with less movement or effort.



Highly efficient, highly productive



With more arm force, bucket breakout force, and lift capacity, the REX130 is an impressive performer. And if you're looking to put even more work within reach, add any of the many options and attachments that increase machine capability and expand your profit potential.

1. Reliable and durable Cummins diesel engine, more efficient with low maintenance costs.
2. Generous flow, and swing torque help speed cycles. So you can do your best to stay on schedule or ahead of the weather.
3. With large idlers, rollers, and strutted links, the sealed and lubricated undercarriage delivers long and reliable performance.



ENGINE

Engine Make - Engine Model / Optional	Cummins 4BTAA3.9 / QSF3.8
Emission Rating (Optional)	Tier 2 (Tier 3, Tier 4)
Cylinders	4
Displacement L (cu.In) / Optional	3.9(237)/ 3.8(231)
Net Power kW (Hp) @ Rated rpm (Optional)	86(115)@2,200
Fuel System	Direct Injection
Aspiration	Turbocharged

COOLING

Fan Drive / Optional	Belt Driven / Hydraulic reversible
----------------------	------------------------------------

POWERTRAIN

Type	Dual speed mode for tracks on dash one button activation
Travel Speed - Low km/h (mp/h):	3(2)
Travel Speed - High km/h (mp/h):	5(3)
Drawbar Pull kg (lb)	8,000(17,637)
Gradeability	70%

HYDRAULICS

Type	Open Center, load sensing, two variable displacement axial piston pumps
Pressure Mpa (psi) / Optional	37.3(5,410)
Max. Flow L/min (gpm) (each)	165(43)
Power Boost Map (psi)	34(4,975)
Control	Pilot levers, low effort hydraulic controls with horn and boost buttons

CYLINDERS

	Bore	Rod Diameter	Stroke
Boom (2) mm (in)	105(4.1)	70(2.8)	990(39.0)
Arm (1) mm (in)	115(4.5)	75(3.0)	1,175(46.3)
Bucket (1) mm (in)	9.5(3.7)	65(2.6)	885(34.8)

ELECTRICAL

Number of batteries	2
Voltage	24V
Alternator Rating	70A/120A
Lights	5 front Lights , 1 Rear Light

Equipment specifications and images may change without notice from Rhino Equipment Group Inc.



UNDERCARRIAGE

Carrier Rollers (each side)	2
Track Rollers (each side)	7
Shoes (each side) Triple Semi-Grousers	42
Track:	
Adjustment	Hydraulic
Guides	Front Idler
Chain	Sealed and Lubricated

GROUND PRESSURE

Triple Semi-Grouser (500mm) (20 in) Shoes Kpa (psi) / Optional	38(5.5) / 39(5.6)
--	-------------------

SWING MECHANISM

Speed rpm	12.6
Torque Nm (lb-ft)	27,220(20,076)

REFILL CAPCITIES L (gal)

Fuel Tank	247(65)
Colling System	14(4)
Engine Oil	11(3)
Hydraulic System	145(38)
Hydraulic Tank	130(34)
Swing Mechanism	0/5(0.1)
Final Drive Case (each)	2.6(0.7)

OPERATING WEIGHTS

With full fuel tank; 79 kg (175lb) operator; 0.53 m³ (0.7 cu. Yd), 370 kg (816 lb) general purpose bucket; 500 mm (20 in) shoes; and 2,500 mm (8.2 ft) arm

Base Weight kg (lb) / Optional	13,000 (28,600) / 14,000 (30,864)
--------------------------------	------------------------------------

Component Weights:

Undercarriage

Triple Semi Grouser 500mm (20 in) Shoes kg (lb)	5,094(11,230)
---	---------------

One-Piece Boom kg (lb)	1,088(2,399)
------------------------	--------------

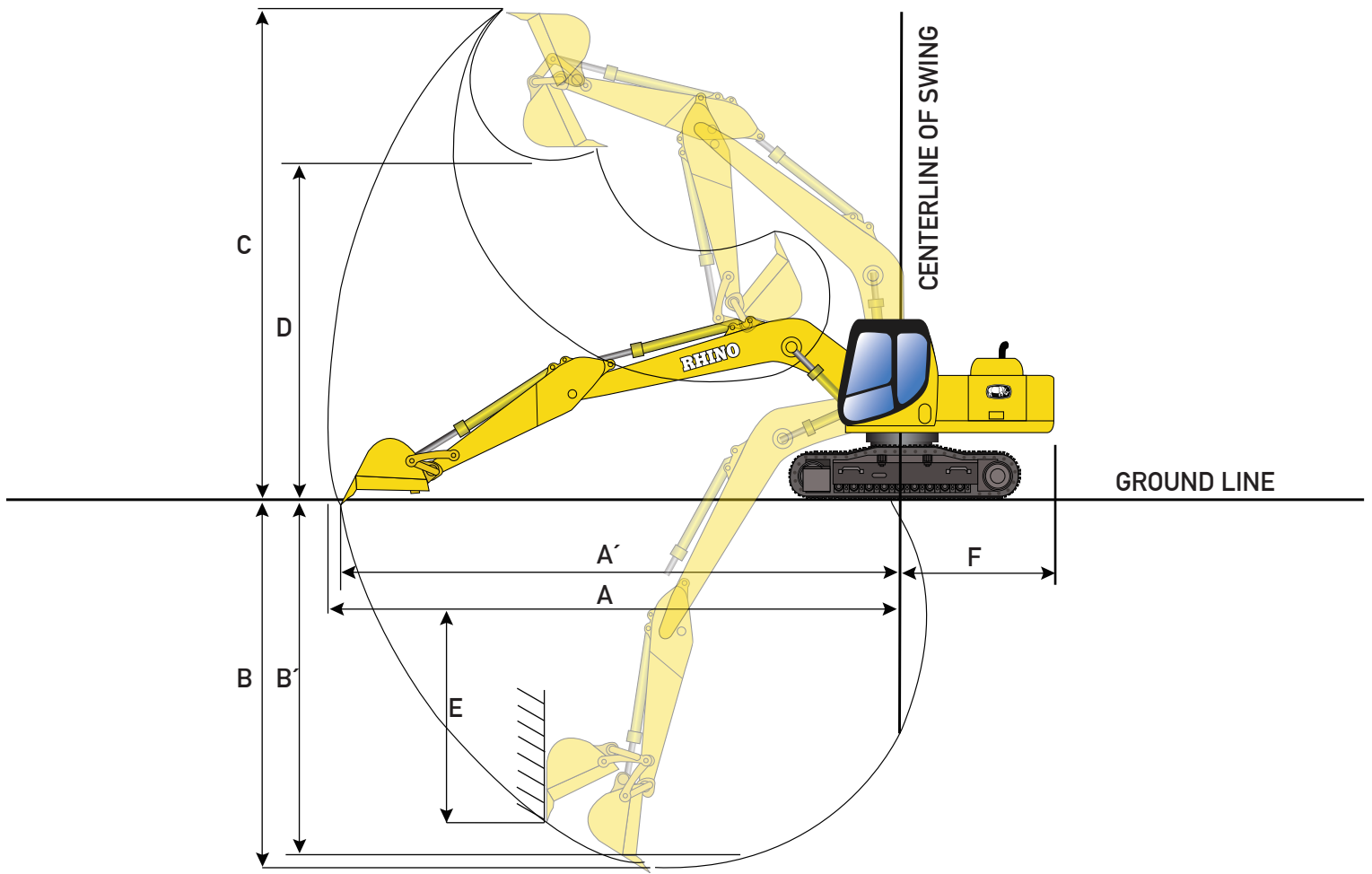
Arm with Bucket Cylinder and Linkage:

2,500 mm (10 ft) kg (lb)	525(1,157)
--------------------------	------------

Boom Lift Cylinders (2), Total Weight kg (lb)	186(410)
---	----------

0.53 m ³ (0.70 cu. Yd) Bucket kg (lb)	370(816)
--	----------

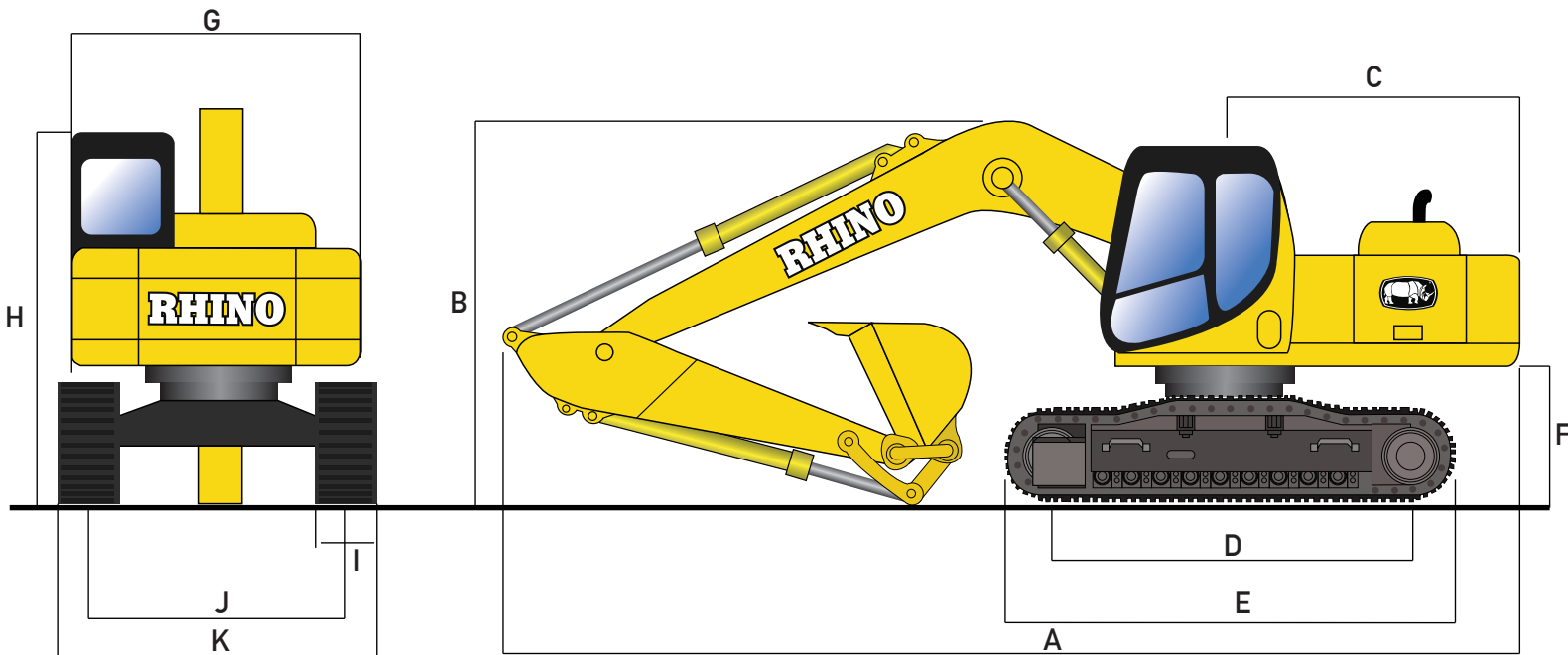
Counterweight, Standard	2,450(5,401)
-------------------------	--------------



OPERATING DIMENSIONS

Arm Length mm (ft)	2,500(8'2")
Boom Length mm (ft)	4,600(15'0")
Bucket Digging Force kN (lb)	100(22,480)
Lift Over End at 15' Radius, Ground Level kg (lb)	5,420(11,949)
Lift Over End at 20' Radius, Ground Level kg (lb)	3,710(8,179)
Lift Over Side at 15' Radius, Ground Level kg (lb)	3,710(8,179)
Lift Over Side at 20' Radius, Ground Level kg (lb)	2,490(5,490)
A. Max. Reach mm (ft)	8,305(27'2")
A'. Max. Reach at Ground Level mm (ft)	8,305(27'2")
B. Max. Digging Depth mm (ft)	5,500(18'0")
B'. Max. Digging Depth at 2,500 mm (8 ft) Fall Bottom mm (ft)	5,285 (17'3")
C. Max. Digging Height mm (ft)	8,630(28'3")
D. Max. Dumping Height mm (ft)	6,180(20'3")
E. Max. Vertical Wall mm (ft)	4,940(16'2")
F. Tail Swing Radius mm (ft)	2,155(7'0") / 2,315(7'5")
Min. Swing Radius mm (ft)	2,495 (8'2")

Equipment specifications and images may change without notice from Rhino Equipment Group Inc.



MACHINE DIMENSIONS

A. Overall Length with 2,500 mm (8 ft) Arm mm (ft) / Optional	7,580(24'8") / 7,740(25'3")
B. Overall Height (To the top of the Boom) with 2,500 mm (8ft) Arm mm (ft)	2,880(9'4")
C. Swing Radius mm (ft)	2,495(8'1")
D. Length of Track on Ground mm (ft) /Optional	2,750(9.0) / 3,000 (9'8")
E. Undercarriage Length mm (ft)	3,485(11'4") / 3,735 (12'2")
F. Counterweight Ground Clearance mm ((ft)	870(2'9")
G. Upperstructure Width mm (ft)	2,490(8'1")
Min. Ground Clearance	430(1'4")
H. Overall Height (To the top of the Cab) mm (ft)	2,830(9'2")
I. Track Width mm (ft) / Optional	500(1'6") / 600(1'9") / 700mm (2'2")
J. Gauge Width mm (ft)	1,960(6'4") / 2,000(6'5")
K. Overall Width with Triple Semi-Grouser 500 mm (20 in) Shoes mm (ft) / Optional	2,460(8'0") / 2,500(8'2")
Counterweight Height (ft)	1,935(6'3")
Distance from swing center to rear	2,155(7'0")
Bucket Capacity m3 (cu.yd) / Optional	0.53 (0.6) / 0.6 (0.7)

RHINO ATTACHMENTS

Rhino Hydraulic Hammer Match: 714BE



Equipment specifications and images may change without notice from Rhino Equipment Group Inc.

OPTIONS

Rhino Excavators can come with different options like: Tier 2, Tier 3, Tier 4 Engine, Rock bucket, Trench bucket, Grapple, Splitter, Ditch Cleaning bucket, Mulchers, Compactors (Vibratory Plates), Quick Coupler, Front Dozer Blade, Thumb Cutter, Forks. Ripper, and many more according to client requirements.



Many options buckets



Hydraulic hammers



Trenchers



Augers

and many more...

Equipment specifications and images may change without notice from Rhino Equipment Group Inc.