



RWD235

WHEELDOZERS



More power and control mean more productivity.



If you've got maximum productivity in mind, the RDL Series Wheel Dozers should be at the top of your list. But it's not just their big torque reserves that make them such impressive performers. Joystick control provide smooth, near-effortless control. Rhino hydraulics sense the load and deliver the flow needed for smooth combined functions and fast work cycles.



1. Control panel provides access to a machine info, brake and throttle pedals are conveniently positioned.
2. Joystick provides convenient operation, delivering smooth control, as well.
3. High quality hose products mean fewer hose changes. Rhino Equipment offers a broad line of high, medium and low-pressure hoses and couplings that are engineered and tested far beyond industry standards for top performance and long life.

ENGINE

Model	Cummins / M11-C or Rhino
Emission Rating (optional)	Tier 2 (Tier 3, Tier 4)
Cylinders	6
Displacement L (cu. In)	11(671)
Net Power kW (Hp) @ Rated rpm	216(290)@ 2,200 rpm
Net Peak Torque Nm (lb-ft) @ Rated rpm	1,329(980)@ 1,500 rpm
Net Torque Rise	41%
Fuel System	Direct Injection
Lubrication	Full-flow spin-on filter
Aspiration	Turbocharged, charge air cooled
Air Cleaner	Under-hood, dual element dry type, restriction indicator on filter housing for service
Fan Drive	Hydraulic driven
Electrical System	24 Volts with 70 Amp alternator
Batteries (2-12 volt)	120A

TRANSMISSION

Type	Powershift
Torque Converter	Single-stage, Dual-phase, Quad-element torque
Operator Interface	Steering column lever for two gears forward and one in reverse
Shift Modes	Manual activation (Forward: 1st and 2nd; Reverse: 1st)
Maximum Travel Speeds (with 29.5-25 -22PR tires)	Forward Reverse
1st Gear km/h (mph)	7(5) 12(8)
2nd Gear km/h (mph)	26(16)

AXLES/BRAKES

Final Drives	Heavy duty inboard-mounted planetary
Differentials	Helical bevel gear
Rear Axel Oscillation (with 29.5-25 -22PR tires)	24 degrees (12 degrees each direction)
Service Brakes	Pneumatically assisted, hydraulically actuated, four wheels disk brake
Parking Brake	Manually activated, drum mounted on front output shaft

TIRES/WHEELS	Tread Width mm (in)	Width Over Tires mm (in)
29.5-25 -22PR	2,350(92.5)	3,099(122.0)

REFILL CAPACITIES L (gal)

Fuel Tank	425(112)
Cooling System	30(8)
Engine Oil	32(8)
Transmission Fluid	38(10)
Axle Oil (Front and Rear, each)	70(18)
Hydraulic Tank	300(79)
Brake System (Front and Rear Booster Pump, each)	2.0(0.5)

HYDRAULIC SYSTEM/STEERING

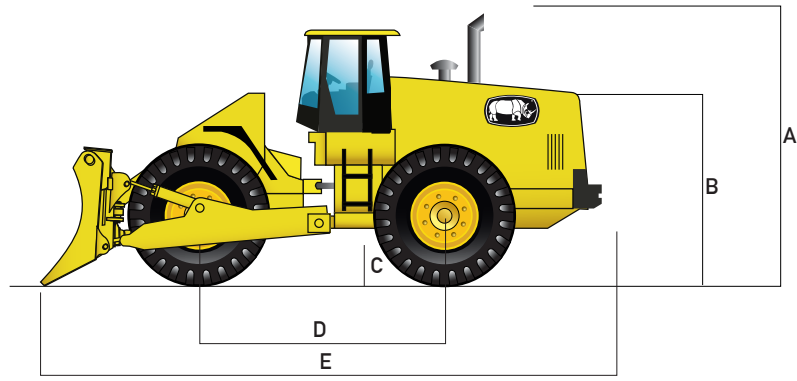
Pump (Blade and Steering)	Gear Pump, variable displacement, closed-center
Max. Rated Flow at 1,920 rpm L/min (gpm)	210(55)
System Relief Pressure (Blade and Steering) Mpa (psi)	21(3,046)
Blade Controls	Dual-multiway valve, joystick control

STEERING

Type	Articulated frame, fully hydraulic
Articulation Angle	35 degrees
Turning Radius (measured to centerline of outside tire) mm (ft)	6,487(21.3)
Operating Weight Kg (lb)	26,000(57,320)

Operating information is based on machine with identified linkage and standard equipment, standard tires, full fuel tank, and 79-kg (175 lb.) operator. This information is affected by changes in tires, ballast, and different attachments.

Equipment specifications and images may change without notice from Rhino Equipment Group Inc.



DIMENSIONS WITH STRAIGHT BLADE

A Height to Top of Cab and Canopy mm (ft)	3,730(12.2)
B Hood Height mm (ft)	3,500(11.5)
C Ground Clearance mm (ft)	496(1.6)
D Wheel base mm (ft)	3,400(11.2)
E Overall Length, Blade on Ground mm (ft)	8,280(27.2)

Blade Specifications

Straight Blade Capacity m ³ (cu. Yd)	4.5(5.9)
Straight Blade Overall Width mm (ft)	3,266(10.7)
Straight Blade Height mm (ft)	1,345(4.4)
Straight Blade Digging Depth mm (ft)	400(1.3)
Max. Lift Above Ground mm (ft)	980(3.2)
Straight Blade Max. Tilt mm (ft)	1,100(3.6)
Straight Blade Weight kg (lb)	3,200(7,055)
Universal Blade Capacity m ³ (cu. Yd)	6.2(8.1)
Universal Blade Overall Width mm (ft)	3,065(10.1)
Universal Blade Height mm (ft)	1,467(4.8)
Universal Blade Digging Depth mm (ft)	450(1.5)
Max. Lift Above Ground mm (ft)	910(3.0)
Universal Blade Max. Tilt mm (ft)	1,070(3.5)
Coal Blade Capacity m ³ (cu. Yd)	15.0(19.6)
Coal Blade Overall Width mm (ft)	3,550(11.6)
Coal Blade Height mm (ft)	1,900(6.2)
Coal Blade Digging Depth mm (ft)	470(1.5)
Max. Lift Above Ground mm (ft)	960(3.1)
Coal Blade Max. Tilt mm (ft)	1,170(3.8)
Semi-U Blade Capacity m ³ (cu. Yd)	6.2(8.1)
Semi-U Blade Overall Width mm (ft)	3,100(10.2)
Semi-U Blade Height mm (ft)	1,600(5.2)
Semi-U Blade Digging Depth mm (ft)	482(1.6)
Semi-U Blade Max. Tilt mm (ft)	1,065(3.5)

Equipment specifications and images may change without notice from Rhino Equipment Group Inc.

BLADES



Dozer Blades



Multi-Purpose Blades



Cushion Blades



Coal Blades



Semi-U Blades



Landfill Blades

Blades can be custom made depending on client requirements such as a bigger blade for lighter material handling or snow plow blade or among many other options.

Equipment specifications and images may change without notice from Rhino Equipment Group Inc.