



**RT70**

**OFF HIGHWAY TRUCK**



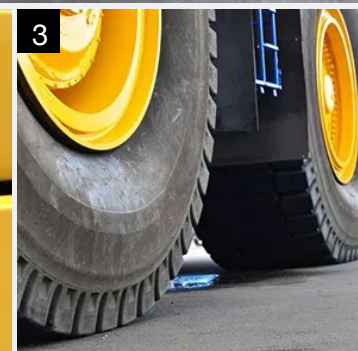
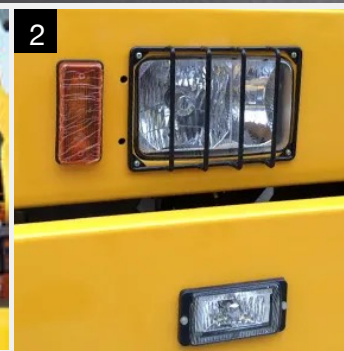


# More Power and control mean more productivity.



Make your operators more productive and dramatically improve the economics of your haul fleet.

With your input, we have designed and manufactured a truck that is reliable, economical and offers comfort, confidence and control for your operators.



1. Be sure to employ premium-quality Air Filters. you can guarantee that only pure air is used for the combustion process.
2. Back-up light, rear, engine compartment light, head lights, halogen, side working lights, stop and tail lights, turn signal with hazard switch.
3. Rugged design and industrial styling make it ideal for hauling heavy loads or working in extreme conditions.

Nominal Payload Capacity Tons (lb)	70 (154,323)
------------------------------------	--------------

## ENGINE

Model	Cummins QSK23-C760 or Rhino
Emissions (optional)	Tier 2 (Tier 3, Tier 4)
Bore x Stroke mm (in)	170x170 (6.7x6.7)
Displacement L (cu.in)	23(1,413)
Gross Power kW (Hp)@2,100 rpm	567(760)
Peak TorqueNm (ft-lb)@1,300 rpm	3,280(2,419)
Net Torque Rise	27%

## DRIVE AXLE

Central reduction	Heavy duty single stage spiral bevel gear
Diferential Ratio	3.846:1
Planetary Gear reduction in Wheel Hub Ratio	5.700:1
Half Shaft	Full floating
Total Ratio of Rear Axle	21.922:1

## TRANSMISSION

Allison H6610AR: electronically controlled automatic transmission with CEC 2 Shift Manager Program, with integral TC683 torque converter, integrated hydraulic retarder and planetary gearing.

Automatic lock up in all ranges

Speed Forward Ratio:	
1st	4.00
2nd	2.86
3rd	2.01
4th	1.35
5th	1.00
6th	0.67
Reverse	3.46

## STEERING

Type	Full Hydraulic power steering system
Actuation	Two double acting hydraulic cylinders and shock absorbers to cushion shocks loads on the system
Emergency Steering	Accumulator provides power
Min. turning radius m (ft)	10.5(34.4)

## SUSPENSION

Front Suspension: independent self-contained nitrogen/oil suspension units. Front suspension cylinders bolted and keyed directly to main frame members. Pistons act as front wheel king pins maintaining correct degree of camber.

Rear Suspension: variable rate nitrogen /oil cylinders with A-frame and lateral stabilizer bar.

Front suspension: stroke mm(in)	328(13)
Rear suspension: stroke mm(in)	178(7)

## BRAKES

Service	All hydraulic brake system
Front	Dry disc
Rear	Oil cooled, multiple disc, completely sealed from dirt and water
Parking	rear brakes, sprigs loaded opposing piston on disc pack, hydraulic released
Retarder	Transmission integrated

## TYRES

Standard	24.00 - 435 (42PR) E-4
Rim Size	17.00 - 35 in

## BODY

The dumper wedge profile ensures quick and clean discharge operation. Side plate and under floor ribs are manufactured from high tensile strength steel. Exhaust heating is standard at the bottom of dumper.

### Thickness:

Floor mm(in)	19(0.7)
Side mm(in)	13(0.5)
Front mm(in)	12(0.5)

### Body Capacity:

Struck m3 (cu.Yd)	30(39)
Headped m3 (cu.Yd)	41(54)

## ELECTRICAL SYSTEM

Single Cable, negative ground voltage rating 24V.

## FRAME

Fabricated from high tensile steel and cast iron members at critical points

## HOIST

Twin three stage double acting cylinders mounted on the outer chassis frame

Max. Working Pressure Mpa (psi)	21(3,046)
Max. Raising Angle	60°
Raising Time	15s
Lowering Time	13s

## CAB

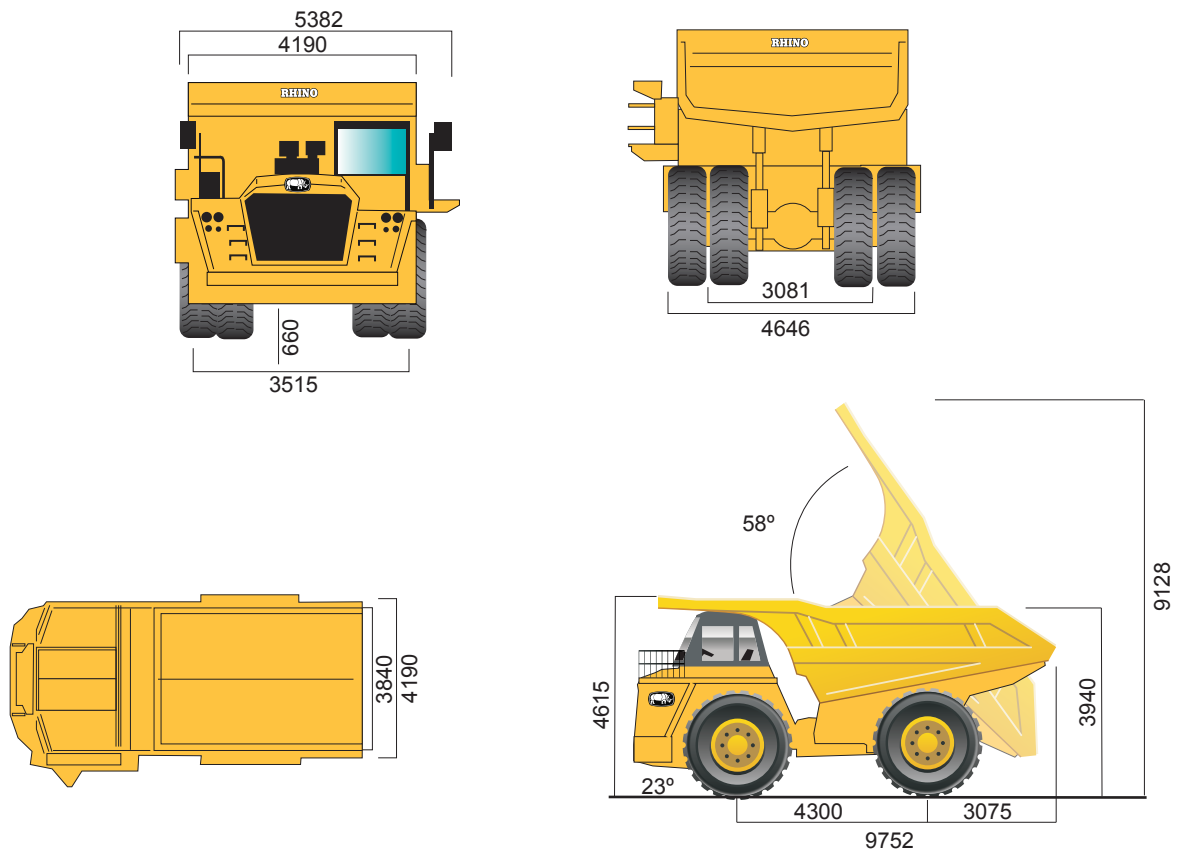
All steel construction, mounted at the left hand side with adjustable seat, thermal and noise insulated. Instrument panel with gauges, warning and indicator for ease of operation, automotive safety glass all round for maximum operator protection.

## OPERATING WEIGHTS

Nominal Vehicle Weight kg (lbs)	46,000(101,413)
Gross Vehicle Weight kg (lbs)	111,000(244,713)
Payload kg (lbs)	65,000(143,300)



## DIMENSIONS



Overall Length mm (ft)	9,752(32)
Overall Width mm (ft)	5,382(18)
Overall Height mm (ft)	4,615(15)
Outside Body Width mm (ft)	4,190(14)
Inside Body Width mm (ft)	3,840(13)
Width Over Tires mm (ft)	4,646(15)
Center Front Dual Tire Width mm (ft)	3,515(12)
Center Rear Dual Tire Width mm (ft)	3,081(10)
Ground Clearance mm (in)	660(26)
Body Raised Height mm (ft)	9,128(30)
Body Angle Elevated	58 degrees
Loading Height mm (ft)	3,940(13)
Wheelbase mm (ft)	4,300(14)
Centerline Rear Axle to Tail mm (ft)	3,075(10)
Front Angle	23 degrees
Body Capacity m <sup>3</sup> (cu. Yd)	41(54)

For more options or attachments contact your nearest dealer.

Equipment specifications and images may change without notice from Rhino Equipment Group Inc.