



# REX360

EXCAVATOR



# Unprecedented precision and ease of operation.



This Rhino excavator is loaded with enhancements that not only increase productivity and uptime, but lower daily operating costs, too. A high-efficiency “on-demand” cooling system, advanced multifunction monitor, and productivity modes to allow you to choose your digging style headline the long list of advances.



1. Level climate-control system with automotive-style adjustable louvers helps keep the glass clear and the cab comfortable.
2. LCD monitor provide intuitive access to a wealth of information and functions.
3. Ergonomically correct short-throw pilot levers provide smooth, predictable fingertip control with less movement or effort.

## ENGINE

Engine Make / Engine Model	Cummins 6CTAA8.3-C or Rhino
Emissions (optional)	Tier2(Tier3, Tier4)
Number of Cylinders	6
Displacement L (cu. in)	8.3(506)
Net Power kW (Hp) @2,000rpm	192(257)
Fuel System	Direct Injection
Aspiration	Turbocharged, air-to-air charge air cooler

## COOLING

Fan Drive	Belt driven
-----------	-------------

## POWERTRAIN

Type	Dual speed mode for tracks on-dash one-button activation
Max. Travel Speeds	
Low	3(2)
High	5(3)

## HYDRAULICS

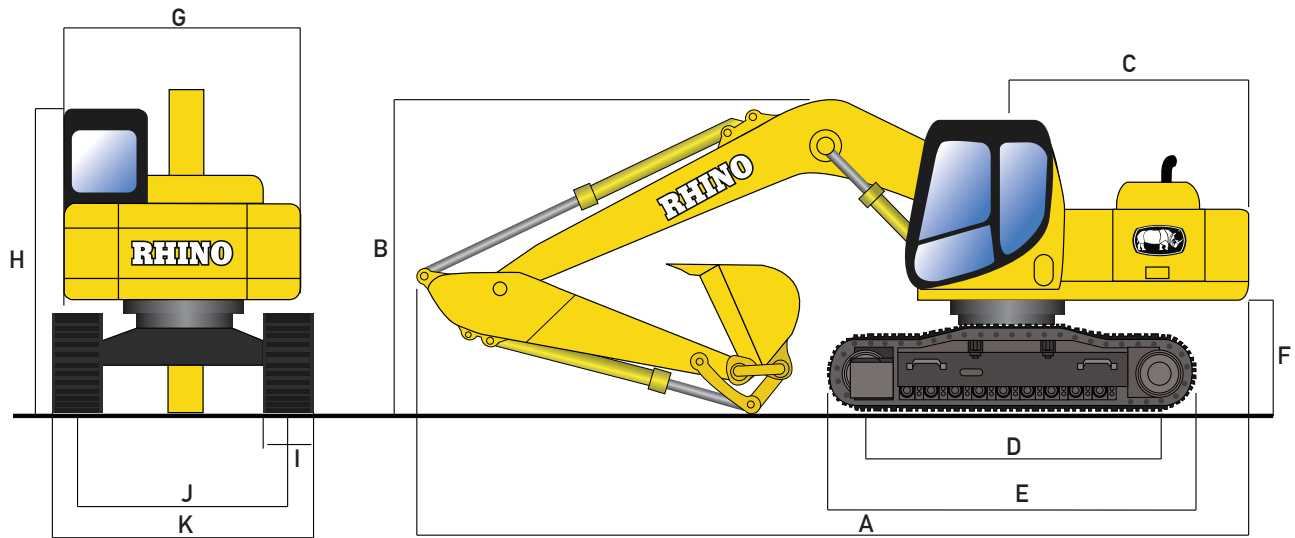
Type	Open center, load sensing, two variable-displacement axial piston pumps
Pressure Mpa (psi)	34(4,975)
Max. Flow L/min (gpm) (each)	265(70)
Power Boost Map (psi)	35(5,076)
Control	Pilot levers, low-effort hydraulic controls with horn and boost buttons

CYLINDERS	Bore	Rod Diameter	Stroke
Boom (2) mm (in)	140(5.5)	100(3.9)	1,420(55.9)
Arm (1) mm (in)	160(6.3)	115(4.5)	1,825(71.9)
Bucket (1) mm (in)	150(5.9)	95(3.7)	1,200(47.2)

Equipment specifications and images may change without notice from Rhino Equipment Group Inc.

<b>ELECTRICAL</b>	
Number of Batteries	2
Voltage	24 Volts
Alternator Rating	70A
Lights	5 Front lights, 1 Rear light
<b>UNDERCARRIAGE</b>	
Carrier Rollers (each side)	2
Track Rollers (each side)	8
Shoes (each side) Triple Semi-Grousers	48
Max. Drawbar Pull kg (lb)	25,400(55.997)
Track	
Adjustment	Hydraulic
Guides	Front Idler
Chain	Sealed and lubricated
<b>GROUND PRESSURE</b>	
Triple Semi-Grouser (700mm) (28in)	68(9.8)
<b>SWING MECHANISM</b>	
Speed rpm	10.6
Torque Nm (lb-ft)	112,590(83.042)
<b>REFILL CAPACITIES L (gal)</b>	
Fuel Tank	610(161)
Cooling System	45(12)
Engine Oil	32,5(9)
Hydraulic Tank	310(82)
Swing Mechanism	16,7(4.4)
Final Drive Case (each)	8,3(2.2)

Equipment specifications and images may change without notice from Rhino Equipment Group Inc.



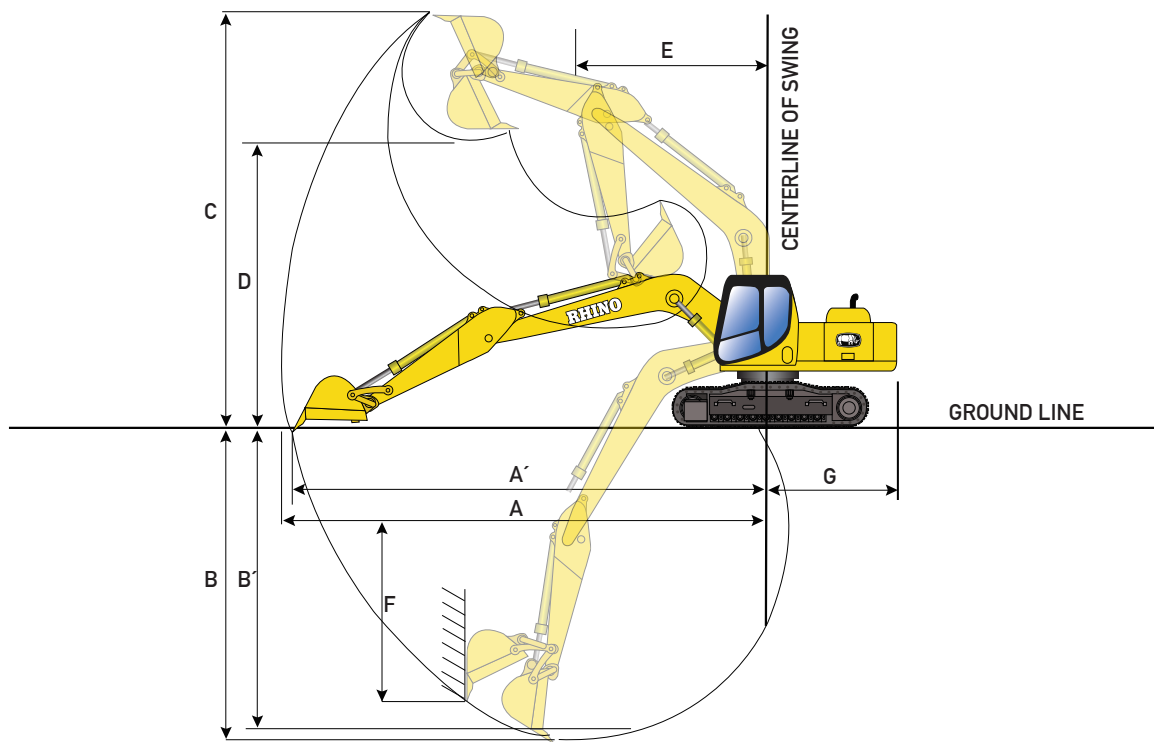
## OPERATING WEIGHTS

With full fuel tank: 79 kg (175 lb) operator; 1.0 m<sup>3</sup> (1.3 cu. Yd) general purpose bucket; 700mm (28in) shoes; and 3,050 mm (10ft) arm

Base Weight kg (lb) 34,500(76.059)

## MACHINES DIMENSIONS

A - Overall Length with 3,185mm (21ft) mm (ft)	11,080(36.4)
B - Overall Height with 3,185mm (21ft) mm (ft)	3,180(10.4)
C - Swing Radius mm (ft)	3,420(11.2)
D - Length of Track on Ground mm (ft)	3,700(12.1)
E - Undercarriage Length mm (ft)	4,600(10.5)
F - Counterweight Clearance mm (ft)	2,265(7.4)
G - Upper-structure Width mm (ft)	2,995(9.8)
H - Cap Height mm (ft)	3,280(10.8)
I - Track Width mm (in)	600(23.6)
J - Gauge Width mm (ft)	2,590(8.5)
K - Overall Width with Triple Semi-Grouser 600mm (24in) shoes mm (ft)	3,190(10.5)



## OPERATING DIMENSIONS

Arm Length mm (ft)	3,185(10.4)
Arm Digging Force kN (lb)	184(41.365)
Bucket Digging Force kN (lb)	208(46.760)
Lift Over End at 15' Radius, Ground Level kg (lb)	18,826(41.504)
Lift Over End at 20' Radius, Ground Level kg (lb)	14,855(32.750)
Lift Over End at 25' Radius, Ground Level kg (lb)	11,130(24.537)
Lift Over Side at 15' Radius, Ground Level kg (lb)	13,835(30.501)
Lift Over Side at 20' Radius, Ground Level kg (lb)	9,564(21.085)
Lift Over Side at 25' Radius, Ground Level kg (lb)	7,587(16.726)
A. Max. Reach mm (ft)	11,100(36.4)
A'. Max. Reach at Ground Level mm (ft)	10,910(35.8)
B. Max. Digging Depth mm (ft)	7,370(24.2)
B'. Max. Digging Depth at 2,440mm (8ft) falt bottom mm (ft)	7,020(23.0)
C. Max. Cutting Height mm (ft)	10,200(33.5)
D. Max. Dumping Height mm (ft)	7,135(23.4)
E. Min. Swing Radius mm (ft)	4,265(14.0)
F. Max. Vertical Wall mm (ft)	6,380(20.9)
G. Tail Swing Radius mm (ft)	3,420(11.2)

## ATTACHMENTS

Rhino Excavators come standard with the hydraulic line for attachments. Attachments include hydraulic hammers, thumb cutters, and many more.

Rhino Hydraulic Hammer Match: 2735EX



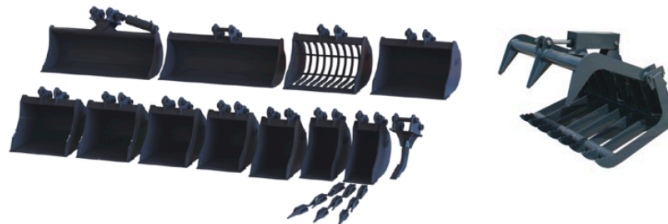
Rhino Excavators can come with different types of buckets depending on work requirements

## OPTIONS

Rhino Excavators can come with different options like: Tier2, Tier3, Tier4 Engine, Close cab, Rock bucket, Trench bucket, Thumb cutters, and many more according to work requirements.

## ATTACHMENTS

Rhino Excavators come standard with hydraulic line for attachments.



Many options buckets



Hydraulic Hammers



Trenchers



Augers

and many more...