



RD17

BULLDOZER



Best-in-class access to service and maintenance points for maximum uptime



Rhino Dozers combine incredible versatility to handle a wide range of jobs with innovations that help you do those jobs better, faster and more efficiently. These crawler dozers are ideal for residential construction performing such tasks as clearing and grading lots, sloping the sides of roads, back-filling, and final grade work for landscaping and driveway construction.



1. Standard high-back seat and lower cushion adjust multiple ways for daylong comfort and support.
2. Easy-to-read, high-visibility gauges and warning lamps keep the operator aware of critical system information.
3. The hydraulic winch offers significant advantages over the traditional mechanical winch in certain applications.

ENGINE

| | |
|---------------------------------------|-----------------------------------------------------------------------------------------|
| Make / Engine Model | Rhino RH52E871 |
| Emission Rating | Tier 2 (Tier 3, Tier 4) |
| Cylinders | 6 |
| Displacement L (cu.In) | 9.7(592) |
| Net Power kW (Hp) @ 1850 rpm | 131(178) |
| Net Peak Torque Nm (lb.ft) @1,300 rpm | 75(564.2) |
| Fuel System | Direct Injection |
| Aspiration | Turbocharged, charge air cooled |
| Air Cleaner | Under-hood , dual element dry type, restriction indicator on filter housing for service |

COOLING

| | |
|-----------|-------------|
| Fan Drive | Belt Driven |
|-----------|-------------|

TRANSMISSION

| | | |
|---------------------------|-------------------------------------------------------------------------------------------------------------------------------------------------------------|------------|
| Type | Planetary gear type, power-shift, forced lubrication | |
| Central Drive Shaft | Spiral bevel gear, single-stage speed reduction, splash lubrication | |
| Steering Clutch | Wet, multi-disc, spring loaded, hydraulically separated, hydraulic control | |
| Steering Brake | Wet type, floating band structure, foot brake with hydraulic booster | |
| System Pressure Mpa (psi) | 2(290) | |
| Maximum Travel Speeds | Forward | Reverse |
| 1st Gear km/h (mph) | 3.29(2.0) | 4.28(2.7) |
| 2nd Gear km/h (mph) | 5.82(3.6) | 7.59(4.7) |
| 3rd Gear km/h (mph) | 9.63(6.0) | 12.53(7.8) |
| Final Drive | Double reduction final drives mounted enclosed and Isolated to protect them from shocks and debris | |
| Drawbar Pull kN (lb) | | |
| Maximum | 270(60.7) | |
| Service Brake | Dynamic braking when decelerator pedal is actuated; brake pedal actuation, hydraulically activated drums on each track for instant stop and reliability. | |
| Parking Brake | Manually activated | |

HYDRAULICS

| | |
|-----------------------|-------------------------------------------------------------------|
| Type | Gear Pump |
| Pressure Mpa (psi) | 14(2,031) |
| Max. Flow L/min (gpm) | 243(64.2) |
| Control | Lever control for blade with float mode: lever control for ripper |

ELECTRICAL

| | |
|-------------------|-------------------------------|
| Battery | 24 volts |
| Alternator Rating | 50A |
| Lights | 2 Front Lights, 2 Rear Lights |

UNDERCARRIAGE

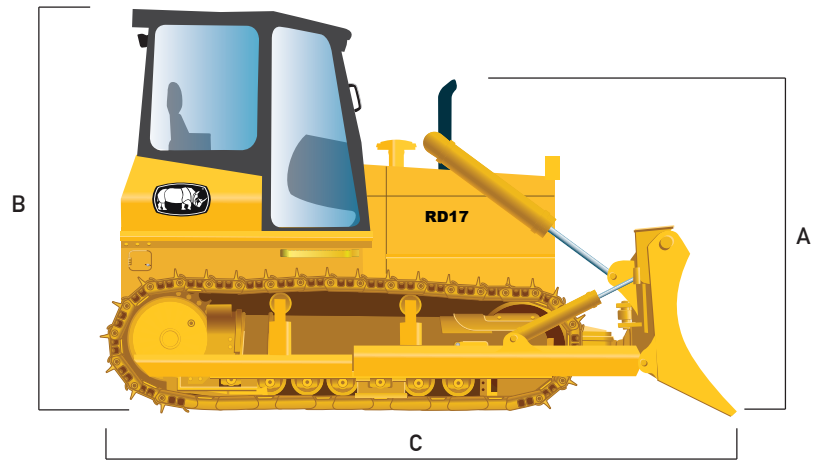
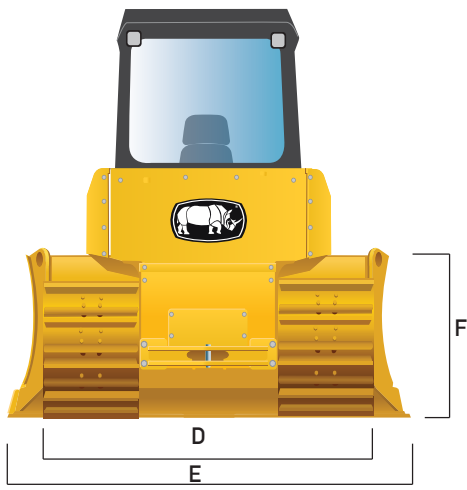
| | |
|---------------------------------------------|------------------------------------------------|
| Type | Sprayed beam, suspended structure of equalizer |
| Track Gauge mm (in) | 1,880(74.0) |
| Grouser Width mm (in) | 510(20.1) |
| Chain | Sealed and lubricated |
| Shoes, Each Side | 37 |
| Track Rollers, Each Side | 6 |
| Track Length on Ground mm (in) | 2,430(95.7) |
| Ground Contact Area cm ² (sq.in) | 27,216(4.2) |
| Ground Pressure Mpa (psi) | 67(9.7) |
| Track Pitch mm (in) | 203,2(8.0) |
| Operator Station | ROPS and FOPS |

REFILL CAPACITIES L (gal)

| | |
|-----------------------------|---------|
| Fuel Tank | 300(79) |
| Cooling System | 79(21) |
| Engine Oil | 28(7) |
| Transmission Fluid | 52(14) |
| Hydraulic Tank | 80(21) |
| Steering | 70(18) |
| Final Drive Case (for both) | 62(16) |

OPERATING WEIGHTS

| | |
|------------------------------------|------------------------------|
| Base Weigh kg (lb) | 17,000(37.5) |
| Weight with 3-Shank Ripper kg (lb) | 21,928-21,982(48.343-48.462) |



MACHINE DIMENSIONS

| Blade Type | Straight-tilt | Angle |
|---------------------------------------------|----------------------------------|-------------|
| A. Overall Height to Top of Exhaust mm (ft) | 3,290(10.8) | 3,290(10.8) |
| B. Height to Top of Cab mm (ft) | 3,440(11.3) | 3,440(11.3) |
| C. Overall Length mm (ft) | 4,996(16.4) | 4,996(16.4) |
| D. Width Over Track mm (ft) | 2,440(8.0) | 2,440(8.0) |
| E. Blade Width mm (ft) | 3,388(11.1) | 3,970(13.0) |
| F. Blade Height mm (ft) | 1,150(3.8) | 1,040(3.4) |
| Tread Depth with Single-Bar Grouser mm (in) | 60(2.4) | 60(2.4) |
| Ground Clearance in Dirt mm (in) | 400(15.7) | 400(15.7) |
| Length With Ripper mm (ft) | 6,268(20.6) | 6,268(20.6) |
| Blade Lift Height mm (in) | 1,210(47.6) | 1,200(47.2) |
| Blade Digging Depth mm (in) | 572(22.5) | 572(22.5) |
| Blade Cutting-Edge Angle (°) | 55 | 55 |
| Blade Capacity m ³ (cu. Yd) | 4,5(5.9) | 4,3(5.6) |
| Blade Angle (°) | 25 | — |
| Blade Tilt mm (in) | 400(15.7) | 400(15.7) |
| Minimum Turning Radius mm (ft) | 4,500(14.8) | 4,500(14.8) |
| Gradeability (°) | 30 | 30 |
| Overall Dimension (LxWxH) | 5,140x3,388x3,032(16.9x11.1x9.9) | |

RIPPER

Single or Multi-shank (3) parallelogram ripper with hydraulic pitch adjustment and replaceable tips

| | |
|--------------------------|------------|
| Weight kg (lb) | 1,667(3.7) |
| Max. Penetration mm (in) | 572(22.5) |

Equipment specifications and images may change without notice from Rhino Equipment Group Inc.

Max. Clearance Under Tip mm (in)

492(19.4)

Overall Length Lowered Position mm (in)

1,272(50.1)

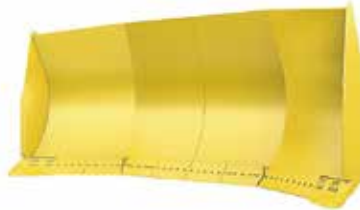
Slope Angle (full raise) (°)

24

BLADES



Angle Blade



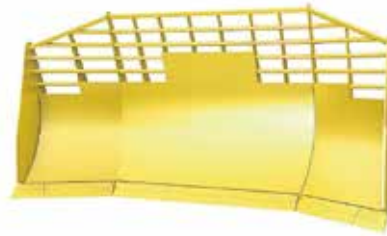
U Blade



Semi U Blade



Straight Blade



Waste Blade



Pat Blade



Multi shank Ripper



Single shank Ripper



Hydraulic Wich

The attachments shown are for reference only; the final product may be different from the images shown.

For more options contact your nearest dealer.

Equipment specifications and images may change without notice from Rhino Equipment Group Inc.