

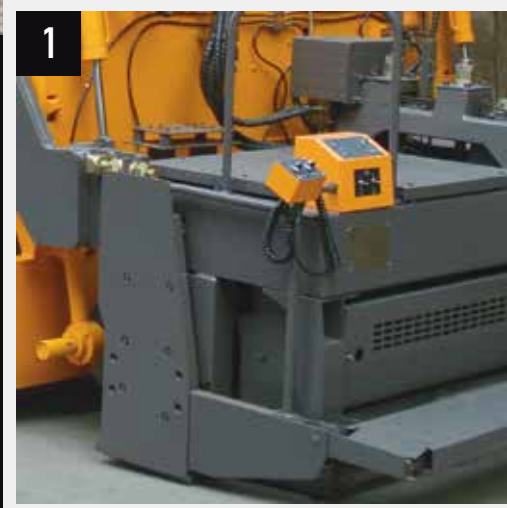
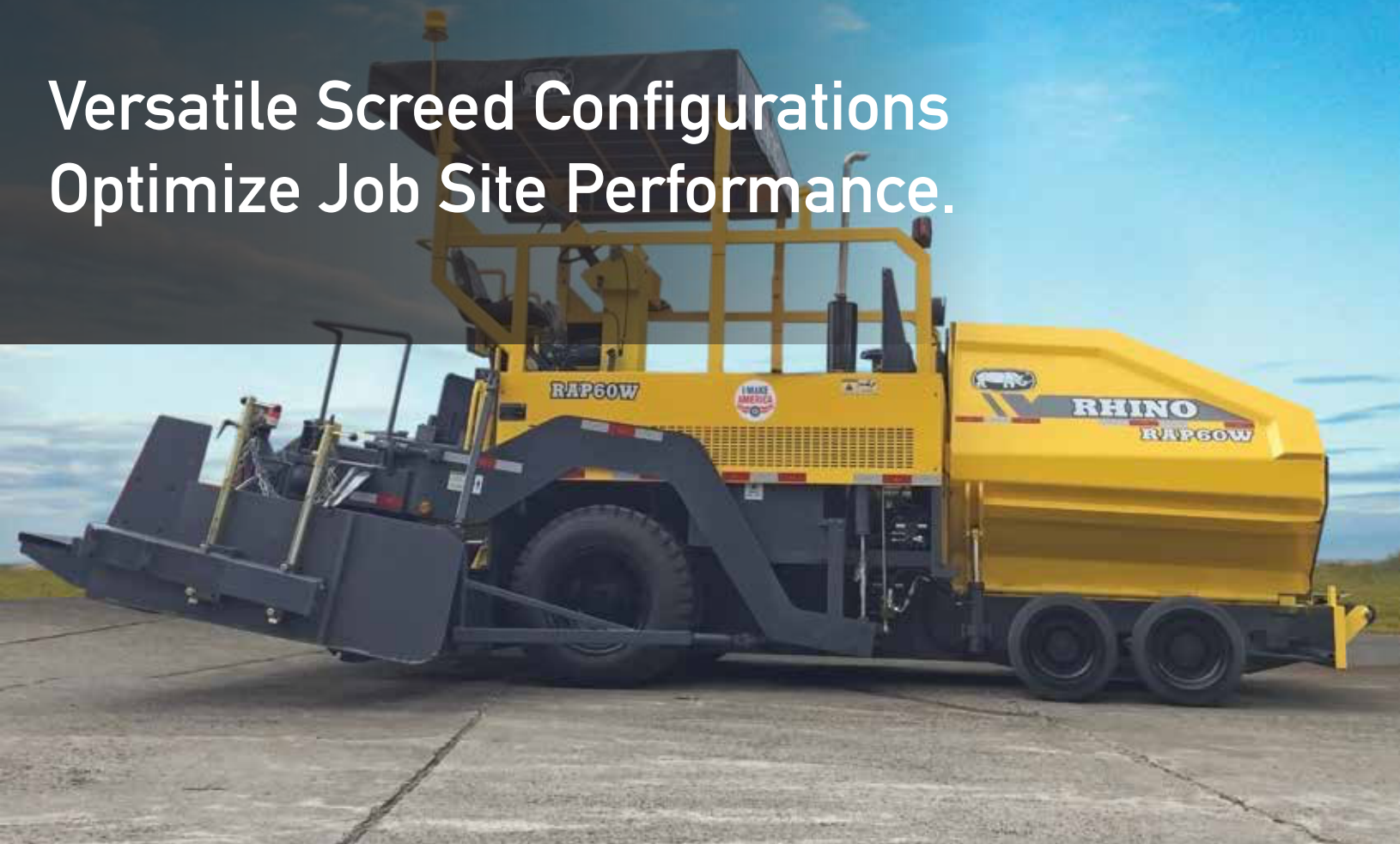


RAP60W

ASPHALT PAVER



Versatile Screed Configurations Optimize Job Site Performance.



1. The paver has good weight distribution over its ground contact area to provide maximum traction and paver stability. Weight and traction balanced with engine power delivers optimum paving performance.

2. Equipped with Deutz engines, the hydraulic extension screed and/or mechanical screed for different road-width paving are equipped with two longitudinal and one transverse automatic levelling probes to meet the high demands of achieving high-grade road smoothness.

3. The Rhino Asphalt Paver with Electronic Control Hydrostatic Sensor are all integrated with advanced components. These pavers are highly adaptable, user friendly, and efficient; suitable for paving highways, or any type of project.

OPERATING WEIGHT

Max. Machine Weight kg (lb) 15,422(34,000)

POWER TRAIN

Engine Make/Model Cummins QSB3.9 / QSB5.9-C190

Net Power kW (Hp) @2,200 rpm 93(124) / 140(187)

Displacement L (cu.In) 6.1(372)

Emission Rating (optional) Tier2 (Tier3, Tier4)

Fuel System Direct Injection

Lubrication Full-flow spin-on filter

Aspiration Turbocharged

Air Cleaner Under-hood, dual element dry type

Fan Drive Belt driven

Electrical System 12 volts with 70 amp alternator

PAVER

Min. Paving Width mm (ft) 2,500(8.0)

Max. Paving Width mm (ft) 6,000(20) / 7,000 (23)

Max. Paving Depth mm (ft) 150(10)

Max. Paving Speed m/min (yd/min) 9.2(10)

High Travel Speed km/h (mph) 16.8(10)

Drive Type Wheels

Tires Front/Rear mm (ft) 4,275x490(4.16x2.4)

Brakes Dynamic Hydrostatic Braking

Theoretical Productivity t/h (US ton/h) 400

SPREADING AUGER SECTIONS

Twin Screws Diameter mm (in) 350(14)

HOPPER Fully articulated, hydraulic controls

Length mm (ft) 2,750(9.0)

Width Closed mm (ft) 2,640(9.0)

Width Open mm (ft) / optional 3,040(10.0) / 3,200(10.5)

Volume m³ (cu. ft) / optional 6.0(212) / 7.0(247)

Capacity Tons (lbs) 12(24,000)

Feeding Conveyors Dual feeders, independent control

SCREED

Extension Mode Hydraulic, telescopic

Heating Mode Fuel, auto ignition

Vibration Amplitude Hz 40

HYDRAULIC SYSTEM

Eating type / optional

Diesel / Electric

Pump Type

Axial piston pump, variable displacement

Driving Type

Axial piston motors, constant displacement

System Pressure Map (psi)

40(5.802)

REFILL CAPACITIES L (gal)

Fuel Tank

116(30.6) / 200(53)

Coolant

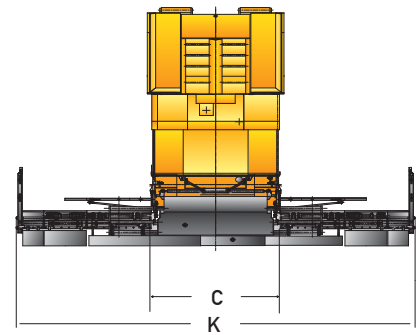
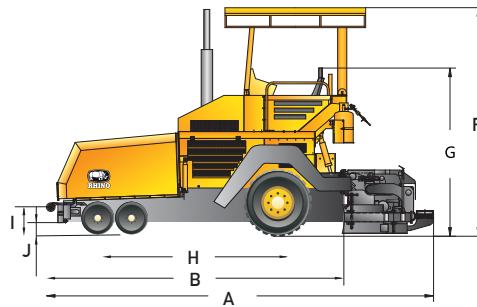
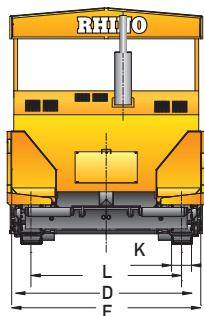
18(5)

Engine Oil

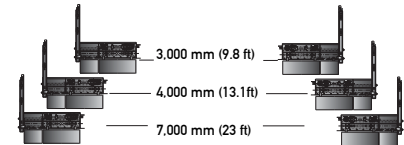
16(4)

Hydraulic Tank

150(40)



Screed Extensions



DIMENSIONS

A. Overall Length with Standard Screed mm (ft)	6,290(20.6)
B. Overall Length without Standard Screed mm (ft)	5,430(17.8)
C. Screed Transport Width mm (ft)	2,500(8.2)
D. Transport Width Hopper Closed mm (ft)	2,800(9.2)
E. Transport Width Hopper Opened mm (ft)	3,040(10.0) / 3,200(10.5)
F. Max. Machine Height mm (ft)	3,695(12.1)
G. Transport Height mm (ft)	3,000(9.8)
H. Wheelbase mm (ft)	3,090(10.1)
I. Hopper Ground Clearance mm (in)	425(16.7)
J. Ground Clearance mm (in)	210(8.3)
K. Max. Paving Width mm (ft)	6,000(20.0) / 7,000(23.0)

OPTIONS

Infrared Heating Screed, Steel Tracks, Auto-Leveling, Tier 3, Tier 4 Engine.

Paver operating information is based on machine with identified linkage and standard equipment, full fuel tank, and 79kg(175lb) operator. This information is affected by changes in screed sizes and different attachments.

Equipment specifications and images may change without notice from Rhino Equipment Group Inc.