



**REX210**

**EXCAVATOR**







# Unprecedented precision and ease of operation.

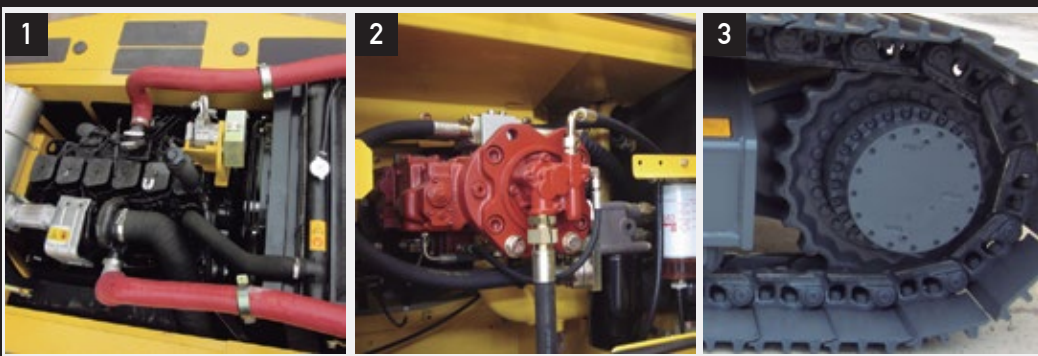
This Rhino excavator is loaded with enhancements that not only increase productivity and uptime, but lower daily operating costs, too. A high-efficiency “on-demand” cooling system, advanced multifunction monitor, and productivity modes to allow you to choose your digging style headline the long list of advances.



1. Level climate-control system with automotive-style adjustable louvers helps keep the glass clear and the cab comfortable.
2. LCD monitor provide intuitive access to a wealth of information and functions.
3. Ergonomically correct short-throw pilot levers provide smooth, predictable fingertip control with less movement or effort.



# Highly efficient, highly productive



With more arm force, bucket breakout force, and lift capacity, the REX210 is an impressive performer. And if you're looking to put even more work within reach, add any of the many options and attachments that increase machine capability and expand your profit potential.

1. Reliable and durable Cummins diesel engine, more efficient with low maintenance costs.

2. Generous flow, and swing torque help speed cycles. So you can do your best to stay on schedule or ahead of the weather.

3. With large idlers, rollers, and struted links, the sealed and lubricated undercarriage delivers long and reliable performance.



## ENGINE

Engine Make / Engine Model	Cummins 6BTAA5.9 / Isuzu 6BG1TRP / Rhino
Emissions (optional)	Tier 2 (Tier 3, Tier 4)
Number of Cylinders	6
Displacement L (cu. in)	5.9 (360)
Net Power kW (Hp) @2,000rpm	133 (178)
Fuel System	Direct Injection
Aspiration	Turbocharged, air-to-air charge air cooler

## COOLING

Fan Drive	Belt Driven
-----------	-------------

## POWERTRAIN

Type	Dual speed made for tracks on-dash one-button activation
Maximum Travel Speeds	5.2 (3.5)
Low	4 (2)
High	5.2 (3.5)
Drawbar Pull kg (lb)	17,400 (38,360)

## HYDRAULICS

Type	Open center, load sensing: two variable-displacement axial-piston pumps
Pressure Mpa (psi)	31(4,554)
Max. Flow L/min (gpm) (each)	226 (60)
Power Boost Map (psi)	34 (4,975)
Control	Pilot levers, low-effort hydraulic controls with horn and boost buttons

## CYLINDERS

	Bore	Rod Diameter	Stroke
Boom (2) mm (in)	120 (4.7)	85 (3.3)	1,285 (50.6)
Arm (1) mm (in)	135 (5.3)	95 (3.7)	1,175 (46.3)
Bucket (1) mm (in)	115 (4.5)	80 (3.1)	1,120 (44.1)



## ELECTRICAL

Number of Batteries	2
Voltage	24 Volts
Battery Capacity (each)	850 CCA
Alternator Rating	70 A
Lights	5 Front lights, 1 Rear lights

## UNDERCARRIAGE

Carrier Rollers (each side)	2
Track Rollers (each side)	8
Shoes (each side) Triple Semi-Grousers	45
Track	
Adjustment	Hydraulic
Guides	Front Idler
Chain	Sealed and lubricated

## GROUND PRESSURE

Triple Semi-Grouser (700mm) (28in)	49 (7.1)
------------------------------------	----------

## SWING MECHANISM

Speed	11.5 rpm
Torque Nm (lb-ft)	67,100 (49,490)

## REFILL CAPACITIES L (gal)

Volume of Fuel Tank	420 (111)
Cooling System	30 (8)
Engine Oil	21,5 (6)
Hydraulic System	266 (70)
Hydraulic Tank	246 (65)
Swing Mechanism	3,4 (0.9)
Final Drive Case (each)	5,4 (1.4)





## OPERATING WEIGHTS

With full fuel tank: 79 kg (175 lb) operator; 1.0 m<sup>3</sup> (1.3 cu. Yd); 688 kg (1517 lb) general purpose bucket; 700 mm (28 in) shoes; and 3,050 mm (10 ft) arm

**Base Weight kg (lb)** **21,300 (46,959)**

### Component Weights

#### Undercarriage

**Triple Semi Grouser 700mm (28 in) Shoes kg (lb)** **6,822 (15,040)**

**One-Piece Boom kg (lb)** **1,679 (3,702)**

#### Arm with Bucket Cylinder and Linkage

**3,050 mm (10 ft) kg (lb)** **705 (1,554)**

**Boom Lift Cylinders (2), Total Weight kg (lb)** **428 (944)**

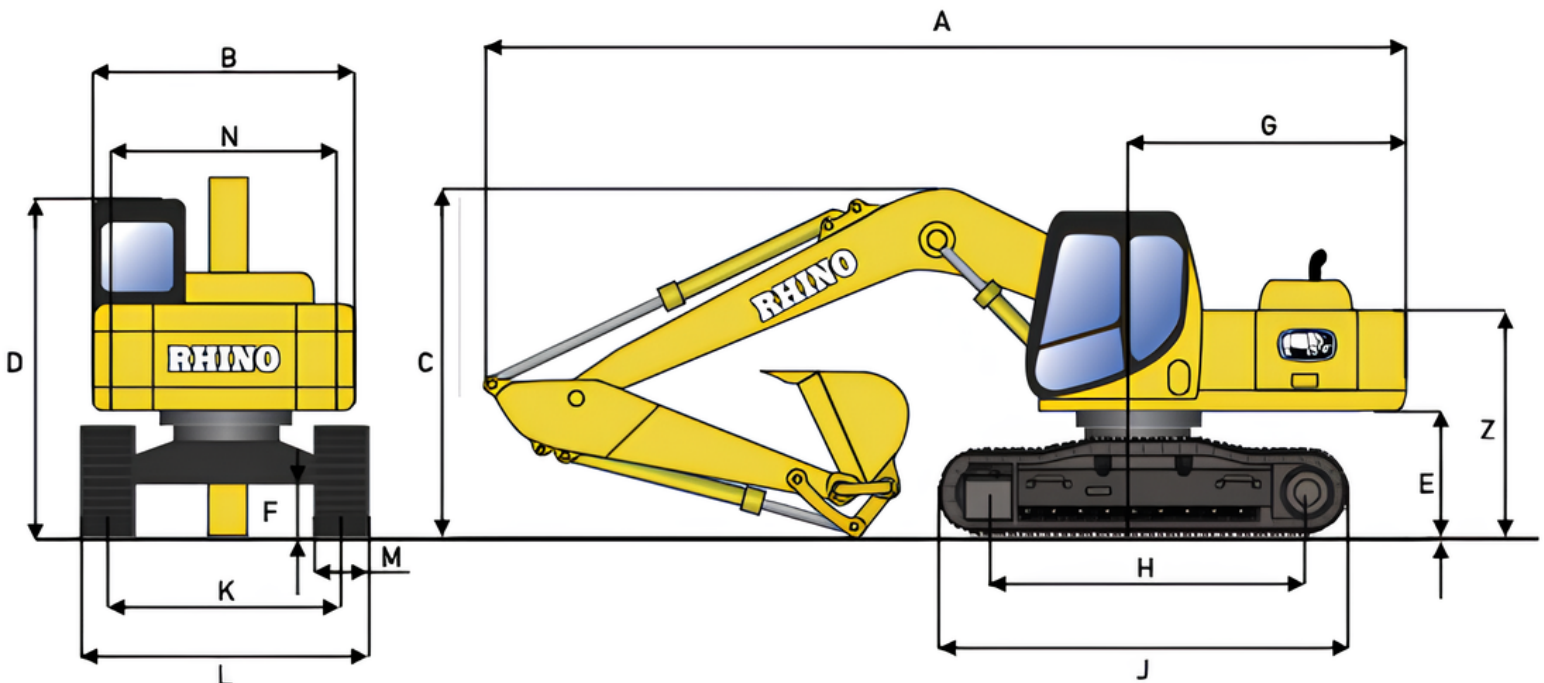
**1.0 m<sup>3</sup> (1.3 cu. Yd) Bucket kg (lb)** **688 (1,517)**

**Counterweight, Standard** **4,450 (9,811)**

## PERFORMANCE PARAMETERS

**Gradeability (%)** **70**

## MACHINES DIMENSIONS



Equipment specifications and images may change without notice from Rhino Equipment Group Inc.

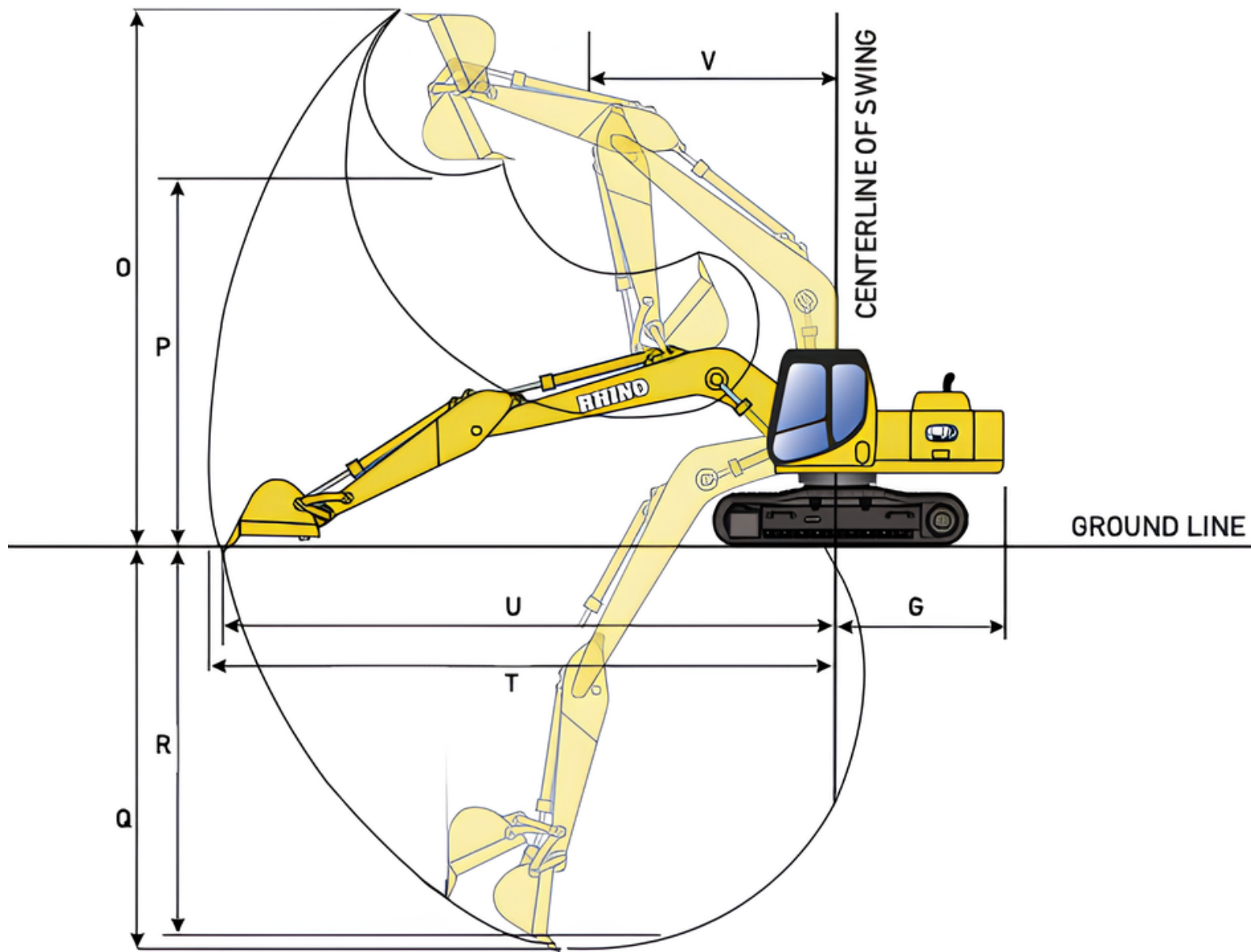


## MACHINE DIMENSIONS

Bucket Capacity m <sup>3</sup> (cu. Yd)	1 (1.3)
Arm Length mm (ft)	2,900 (9.5)
Boom m (ft)	5.7 (18.7)
A- Overall Length mm (ft)	9,600 (31.5)
B- Overall Width mm (ft)	2,780 (9.1)
C- Total Height (Boom top) mm (ft)	3,040 (10)
D- Total Height (Cap top) mm (ft)	3,120 (10.2)
E- Counterweight Ground Clearance mm (ft)	1,065 (3.5)
F- Min. Ground Clearance mm (ft)	466 (1.5)
G- Turning Radius of Vehicle Tail mm (ft)	2,720 (8.9)
H- Track Length on the Ground mm (ft)	3,260 (10.7)
J- Track Shoe Length mm (ft)	4,060 (13.6)
K- Track Gauge mm (ft)	2,180 (9.1)
L- Track Width mm (ft)	2,780 (7.2)
M- Track Shoe Width mm (ft)	600 (2)
N- Swing Frame Width mm (ft)	2,700 (8.9)

## OPERATING RANGE

O- Max. Digging Height mm (ft)	9,275 (30.4)
P- Max. Dumping Height mm (ft)	6,560 (21.5)
Q- Max. Digging Depth mm (ft)	6,515 (21.4)
R- Max. Vertical Wall Digging Depth mm (ft)	5,915 (19.4)
T- Max. Digging Reach mm (ft)	9,865 (32.4)
U- Max. Digging Reach at Ground Level mm (ft)	9,680 (31.8)
V- Min. Swing Radius	3,630 (11.9)
W- Max. Height at Min. Swing Radius mm (ft)	7,670 (25.2)
X- Distance from Swing Center to Tail mm (ft)	2,720 (8.9)
Z- Counterweight Height mm (ft)	2,120 (7)
A1- Ground Length (During Transporting) mm (ft)	4,850 (15.9)



Equipment specifications and images may change without notice from Rhino Equipment Group Inc.





## ATTACHMENTS

Rhino Excavators come standard with the hydraulic line for attachments. Attachments include hydraulic hammers, thumb cutters, and many more.

Rhino Hydraulic Hammer Match: 1826EX



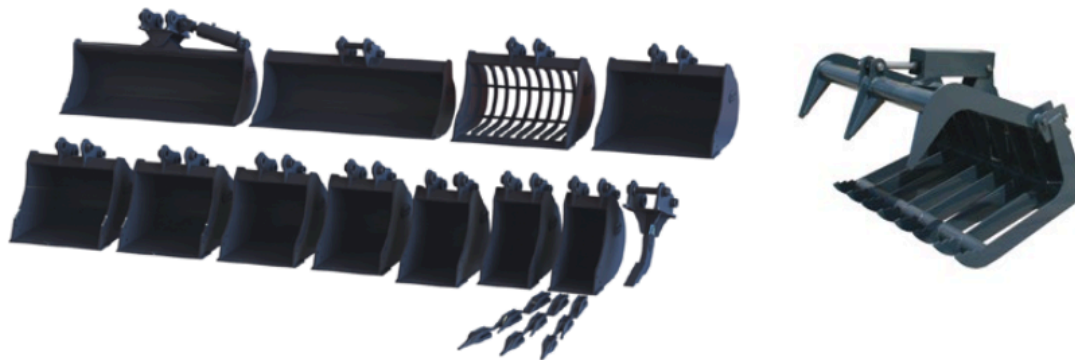
Rhino Excavators can come with different types of buckets depending on work requirements

## OPTIONS

Rhino Excavators can come with different options like: Tier2, Tier3, Tier4 Engine, Close cab, Rock bucket, Trench bucket, Thumb cutters, and many more according to work requirements.

## ATTACHMENTS

Rhino Excavators come standard with hydraulic line for attachments.



Many options buckets



Hydraulic Hammers



Trenchers



Augers

and many more...

