

# Hydraulic Excavator Assembly Instructions

PAPER CRAFT

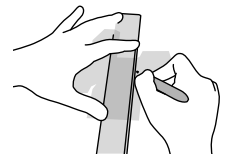


## Tools

- Scissors
- Ruler, set square
- Glue (Wood glue or craft glue recommend)
- Exhausted ballpoint pen (out of ink)
- Toothpicks (for use in applying glue)
- Tweezers (useful for handling small parts)
- Pencil

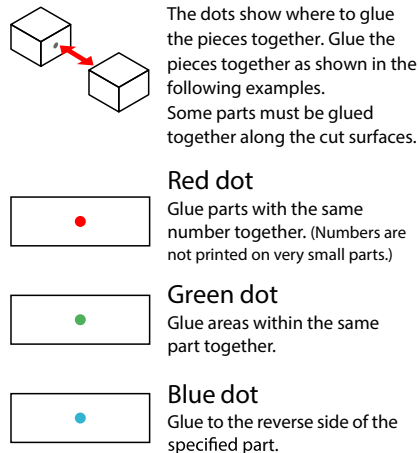
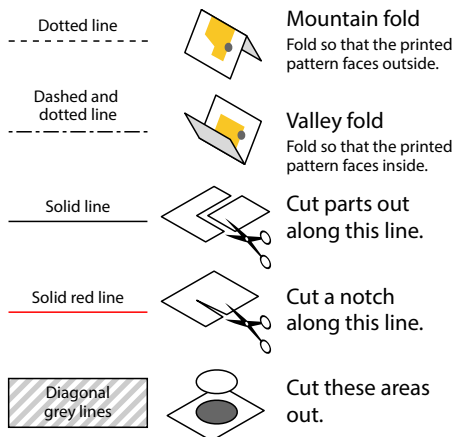
## Assembly tip

- Write the number of each part on the reverse side of the part in pencil upon cutting it out, to be sure you can tell which part is which later.
- Before gluing, crease the paper along mountain and valley fold lines. Trace along the folds with a ruler and an exhausted ballpoint pen (out of ink) to get a sharper fold.
- Make sure rounded sections are nice and stiff.

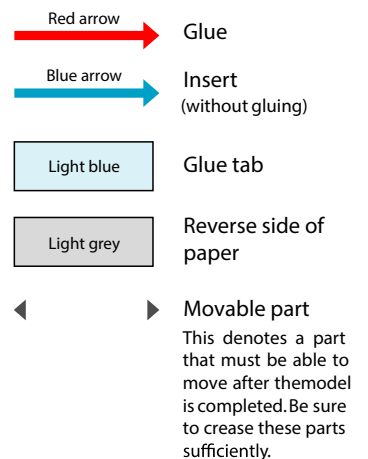


## Key to symbols

### Pattern



### Assembly instructions



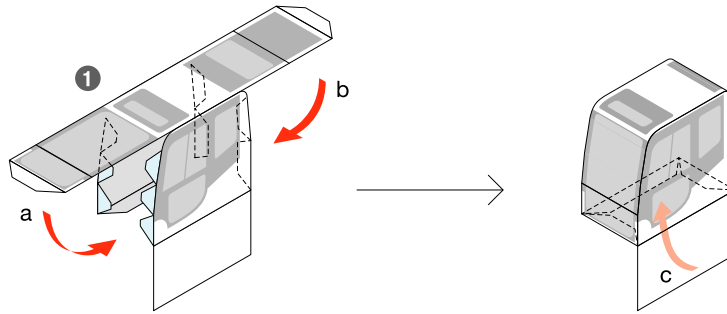
Glue, scissors and other tools may be dangerous to young children so be sure to keep them out of the reach of young children.

Assembly Instructions: Six A4 sheets (No. 1 to No. 6)

Build this model with careful reference to the Assembly Instructions.

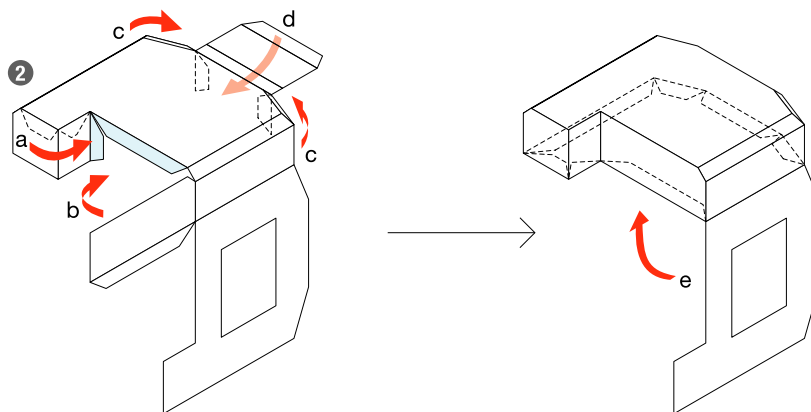
**A**

Assemble the cab.  
Glue flaps a, b, and c in order.



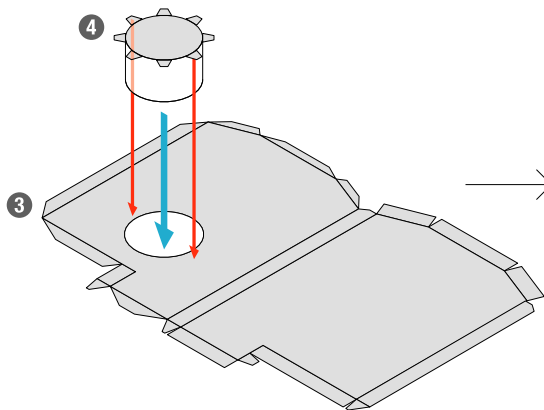
**B**

Glue flaps a, b, c, d, and e in order.

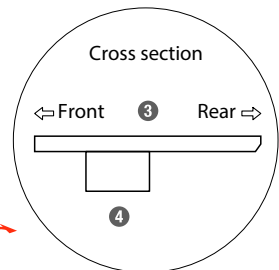
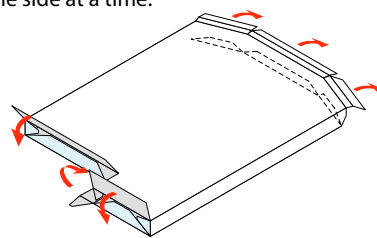


**C**

Before assembling part 3, insert part 4 in what will become the inside surface of part 3 and glue it in place.



Taking care not to let the outline become warped, carefully glue one side at a time.



Use care with the form of the rear portion of the part, making sure the top of this rear surface is flat.

**D**

Assemble part 7 and then insert part 8 from the bottom and glue it in place.

Insert part 9 to the inside of part 8 and glue it in place.

Glue part 12 in place to cover the hole and glue spot.

**E**

When assembling these pieces, be very careful to ensure the mountain and valley folds are as shown in the illustration. Insert the pieces after checking the fit.

**F**

Take care to glue the components of this piece together in the order shown.

**G**

**H**

Glue to the reverse side of part 32.

Glue part E1 to the reverse of the part shown in the same way.

**I**

Glue flaps a and b in order.

Wrap part 36 around part 34 so the seam is on the bottom, and glue it in place.

Cross section

Inside ← → Outside

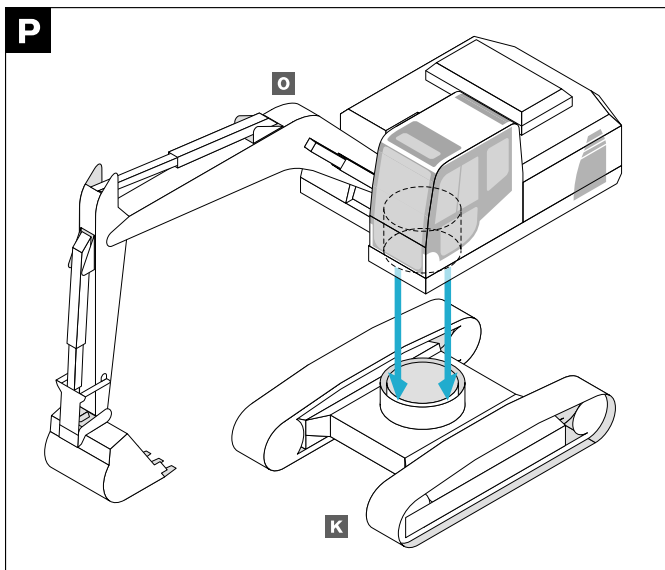
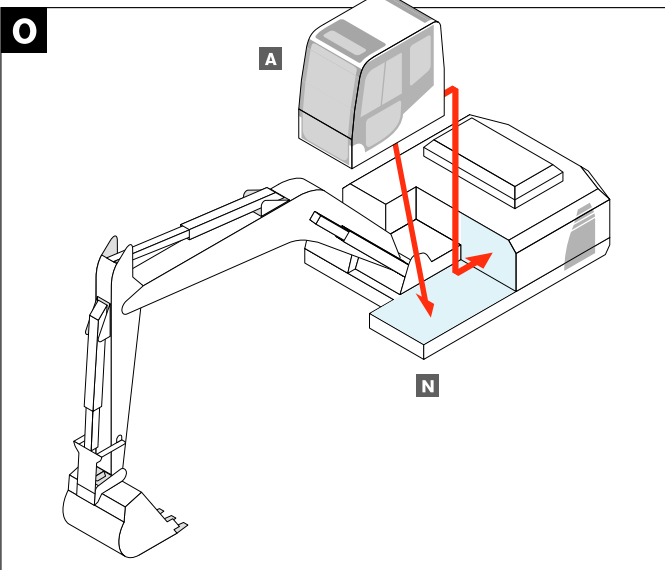
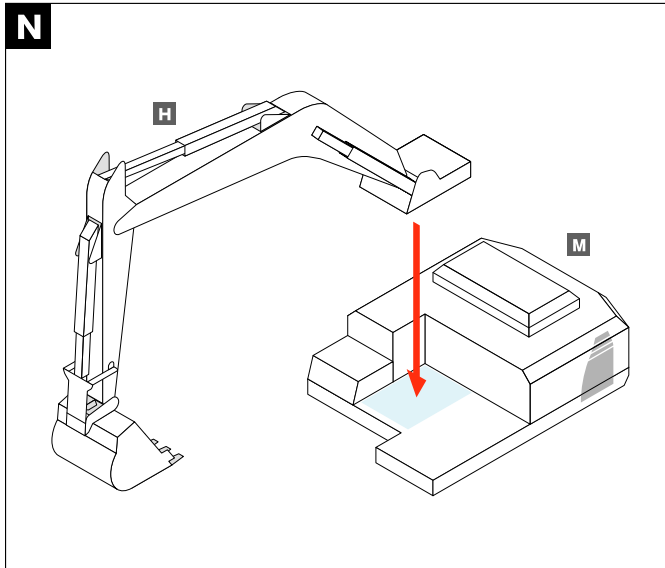
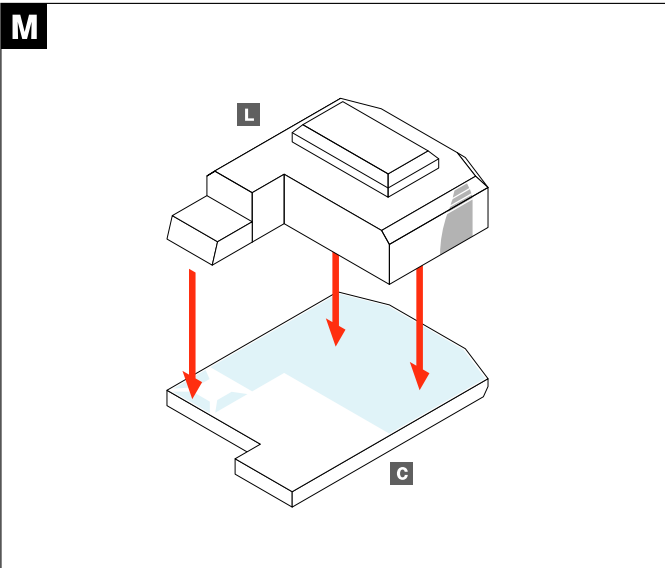
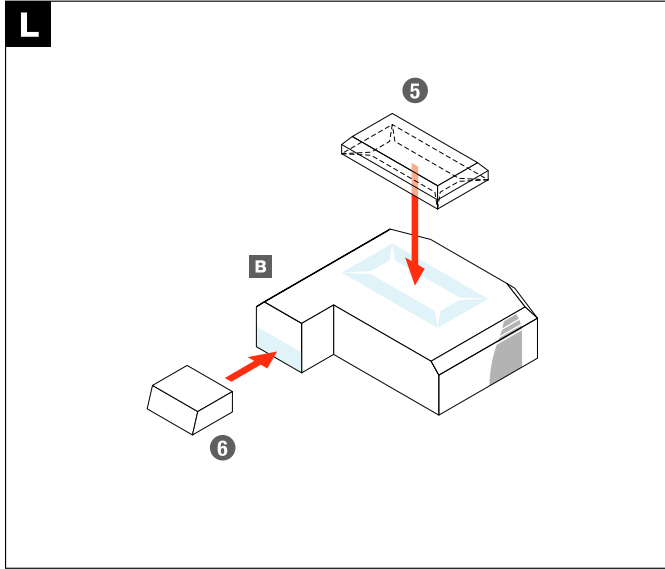
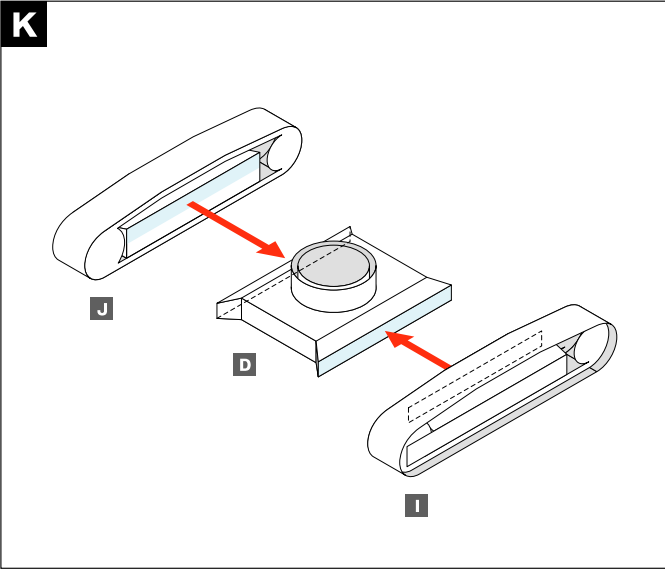
Make sure part 36 extrudes toward the outside.

**J**

Assemble the other side in the same way (making the left and right sides symmetrical).

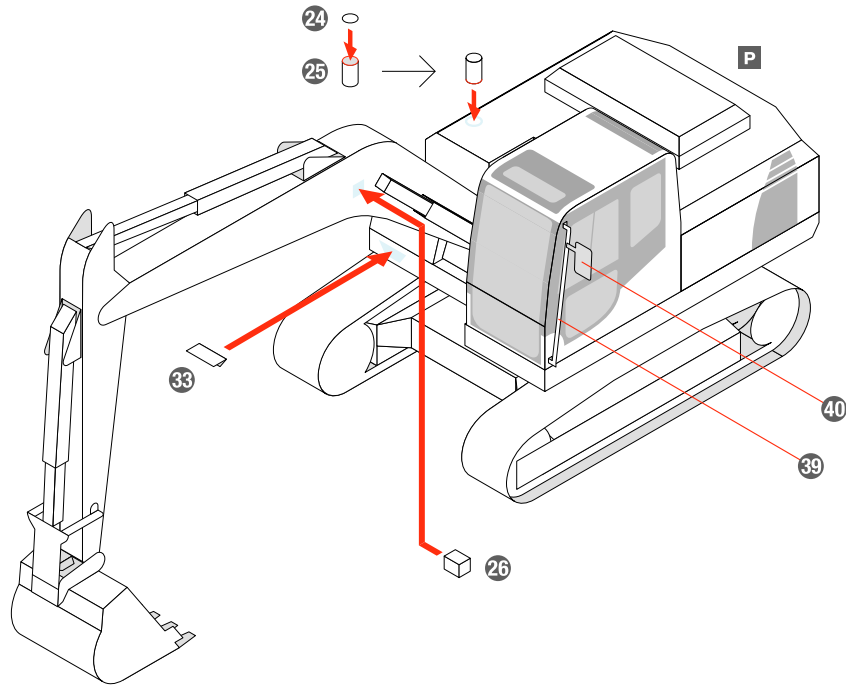
Cross section

Outside ← → Inside

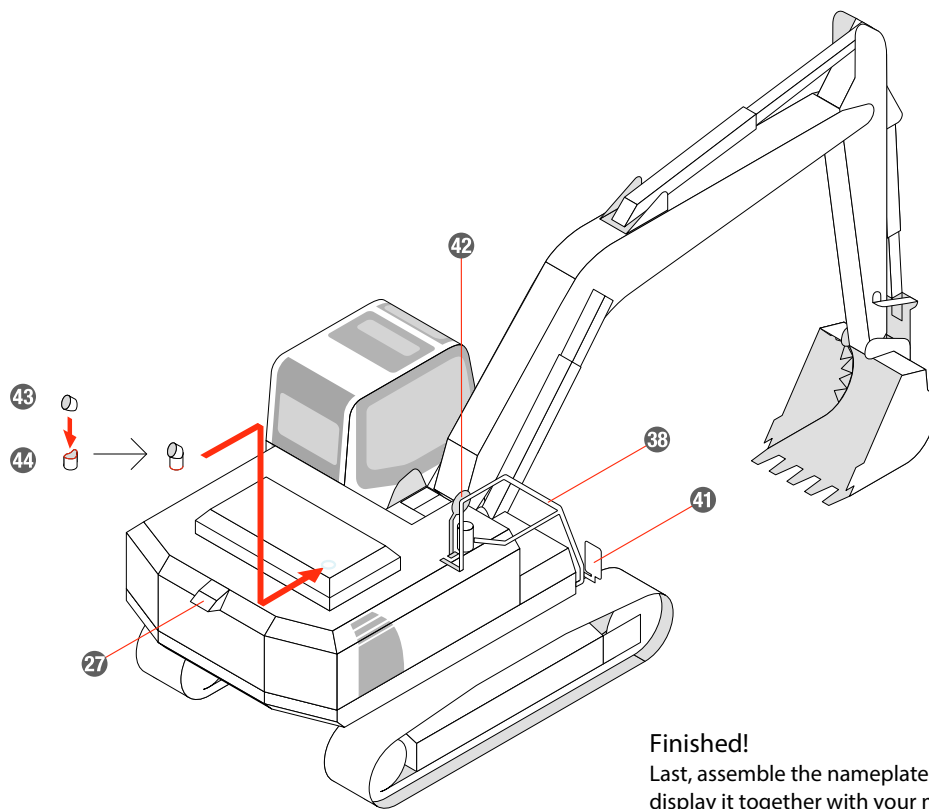


Q

On parts with no glue tabs, apply glue to the cut surface of the paper and glue this part to the body of the hydraulic excavator, concealing the glue tabs. (Refer to the photograph of the completed model.)



R



**Finished!**  
Last, assemble the nameplate and display it together with your model.

