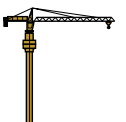




RWD315

WHEEL DOZERS



ENGINE

Model	Cummins / M11-C or Rhino
Emission Rating (optional)	Tier 2 (Tier 3, Tier 4)
Cylinders	6
Displacement L (cu. In)	11(671)
Net Power kW (Hp) @ Rated rpm	250(335)@ 2,200 rpm
Net Peak Torque Nm (lb-ft) @ Rated rpm	1,674(1,235)@ 1,500 rpm
Net Torque Rise	47%
Fuel System	Direct Injection
Lubrication	Full-flow spin-on filter
Aspiration	Turbocharged, charge air cooled
Air Cleaner	Under-hood, dual element dry type, restriction indicator on filter housing for service
Fan Drive	Hydraulic drive
Electrical System	24 Volts with 70 Amp alternator
Batteries (2-12 volt)	120A

TRANSMISSION

Type	Powershift
Torque Converter	Single-stage, Dual-phase, Quad-element torque
Operator Interface	Steering column lever for two gears forward and one in reverse
Shift Modes	Manual activation (Forward: 1st and 2nd; Reverse: 1st)
Maximum Travel Speeds (with 29.5-25 tires)	Forward Reverse
1st Gear km/h (mph)	6.4(4.0) 6.4(4.0)
2nd Gear km/h (mph)	11.9(7.4) 11.9(7.4)
3rd Gear km/h (mph)	18.7(11.6) 25.9(16.1)
4nd Gear km/h (mph)	37.0(23.0)

AXLES/BRAKES

Final Drives	Heavy duty inboard-mounted planetary
Differentials	Helical bevel gear
Rear Axle Oscillation (with 29.5-25 -22PR tires)	24 degrees (12 degrees each direction)
Service Brakes	Pneumatically assisted, hydraulically actuated, four wheels disk brake
Parking Brake	Manually activated, drum mounted on front output shaft
TIRES/WHEELS	Tread Width mm (in) Width Over Tires mm (in)
29.5-25 -22PR	2,450(96.5) 3,200(126.0)

Equipment features and specifications may change without notice from Rhino Equipment Group Inc.

REFILL CAPACITIES L (gal)

Fuel Tank	480(127)
Cooling System	55(15)
Engine Oil	32(8.5)
Transmission Fluid	43(11)
Axle Oil (Front and Rear, each)	51(13)
Hydraulic Tank	260(69)
Brake System (Front and Rear Booster Pump, each)	2.0(0.5)

HYDRAULIC SYSTEM/STEERING

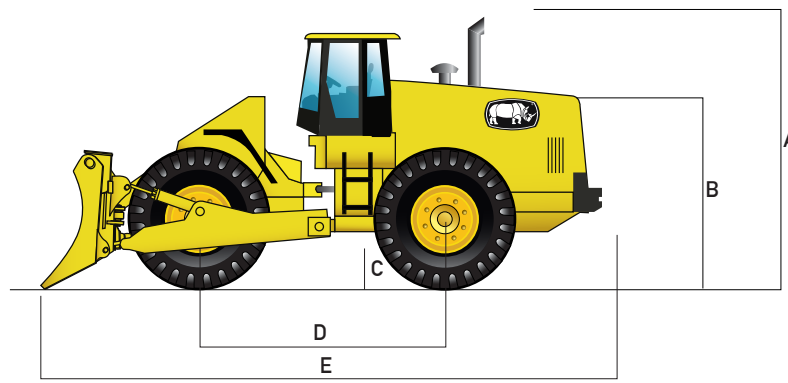
Pump (Blade and Steering)	Gear Pump, variable displacement, closed-center
Max. Rated Flow at 1,920 rpm L/min (gpm)	210(55)
System Relief Pressure (Blade and Steering) Mpa (psi)	26(3,771)
System Relief Pressure Steering Mpa (psi)	21(3,046)
Blade Controls	Dual-multiway valve, joystick control

STEERING

Type	Articulated frame, fully hydraulic
Articulation Angle	40 degrees
Turning Radius (measured to centerline of outside tire) mm (ft)	6,614(21.7)
Operating Weight Kg (lb)	34,500(76,059)

Operating information is based on machine with identified linkage and standard equipment, standard tires, full fuel tank, and 79-kg (175 lb.) operator. This information is affected by changes in tires, ballast, and different attachments.

Equipment features and specifications may change without notice from Rhino Equipment Group Inc.



DIMENSIONS WITH STRAIGHT BLADE

A Height to Top of Cab and Canopy mm (ft)	3,832(12.6)
B Hood Height mm (ft)	3,720(12.2)
C Ground Clearance mm (ft)	461(1.5)
D Wheel base mm (ft)	3,650(12.0)
E Overall Length, Blade on Ground mm (ft)	8,280(27.2)

Blade Specifications

Straight Blade Capacity m ³ (cu. Yd)	5.3(6.9)
Straight Blade Overall Width mm (ft)	4,570(15.0)
Straight Blade Height mm (ft)	1,345(4.4)
Straight Blade Digging Depth mm (ft)	388(1.3)
Max. Lift Above Ground mm (ft)	1,020(3.3)
Straight Blade Max. Tilt mm (ft)	1,145(3.8)
Straight Blade Weight kg (lb)	3,320(7,319)
Universal Blade Capacity m ³ (cu. Yd)	7.5(9.8)
Universal Blade Overall Width mm (ft)	4,210(13.8)
Universal Blade Height mm (ft)	1,290(4.2)
Universal Blade Digging Depth mm (ft)	424(1.4)
Max. Lift Above Ground mm (ft)	1,010(3.3)
Universal Blade Max. Tilt mm (ft)	1,120(3.7)
Coal Blade Capacity m ³ (cu. Yd)	16.0(20.9)
Coal Blade Overall Width mm (ft)	4,805(15.8)
Coal Blade Height mm (ft)	1,845(6.1)
Coal Blade Digging Depth mm (ft)	473(1.6)
Max. Lift Above Ground mm (ft)	1,050(3.4)
Coal Blade Max. Tilt mm (ft)	1,190(3.9)
Semi-U Blade Capacity m ³ (cu. Yd)	7.5(9.8)
Semi-U Blade Overall Width mm (ft)	4,330(14.2)
Semi-U Blade Height mm (ft)	1,395(4.6)
Semi-U Blade Digging Depth mm (ft)	435(1.4)
Semi-U Blade Max. Tilt mm (ft)	1,130(3.7)



BLADES



Dozer Blades



Multi-Purpose Blades



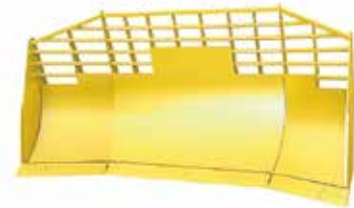
Cushion Blades



Coal Blades



Semi-U Blades



Landfill Blades

Blade Options

Blade Capacities: 5.3m³ - 16m³ (6.9 cu. Yd - 21 cu. Yd)

Blades can be custom made depending on client requirements such as a bigger blade for lighter material handling or snow plow blade or among many other options.

Equipment features and specifications may change without notice from Rhino Equipment Group Inc.