



RWD132

WHEELOZERS



More power and control mean more productivity.



If you've got maximum productivity in mind, the RDL Series Wheel Dozers should be at the top of your list. But it's not just their big torque reserves that make them such impressive performers. Joystick control provide smooth, near-effortless control. Rhino hydraulics sense the load and deliver the flow needed for smooth combined functions and fast work cycles.



1. Control panel provides access to a machine info, brake and throttle pedals are conveniently positioned.
2. Joystick provides convenient operation, delivering smooth control, as well.
3. High quality hose products mean fewer hose changes. Rhino Equipment offers a broad line of high, medium and low-pressure hoses and couplings that are engineered and tested far beyond industry standards for top performance and long life.

ENGINE

Model	Cummins / 6BTA5.9-C or Rhino	
Emission Rating (optional)	Tier 2 (Tier 3, Tier 4)	
Cylinders	6	
Displacement L (cu. In)	5.9(360)	
Net Power kW (Hp) @ Rated rpm	126(169)@ 2,200 rpm	
Net Peak Torque Nm (lb-ft) @ Rated rpm	643(474)@ 1,600 rpm	
Net Torque Rise	17%	
Fuel System	Direct Injection	
Lubrication	Full-flow spin-on filter	
Aspiration	Turbocharged, charge air cooled	
Air Cleaner	Under-hood, dual element dry type, restriction indicator on filter housing for service	
Fan Drive	Belt driven	
Electrical System	24 Volts with 70 Amp alternator	
Batteries (2-12 volt)	120A	

TRANSMISSION

Type	Powershift	
Torque Converter	Single-stage, Dual-phase, Quad-element torque	
Operator Interface	Steering column lever for two gears forward and one in reverse	
Shift Modes	Manual activation (Forward: 1st and 2nd; Reverse: 1st)	
Maximum Travel Speeds (with 20.5 R 25 tires)	Forward	Reverse
1st Gear km/h (mph)	10(6)	12(7)
2nd Gear km/h (mph)	36(22)	

AXLES/BRAKES

Final Drives	Heavy duty inboard-mounted planetary	
Differentials	Helical bevel gear	
Rear Axle Oscillation (with 20.5 R 25 tires)	22 degrees (11 degrees each direction)	
Service Brakes	Pneumatically assisted, hydraulically actuated, four wheels disk brake	
Parking Brake	Manually activated, drum mounted on front output shaft	

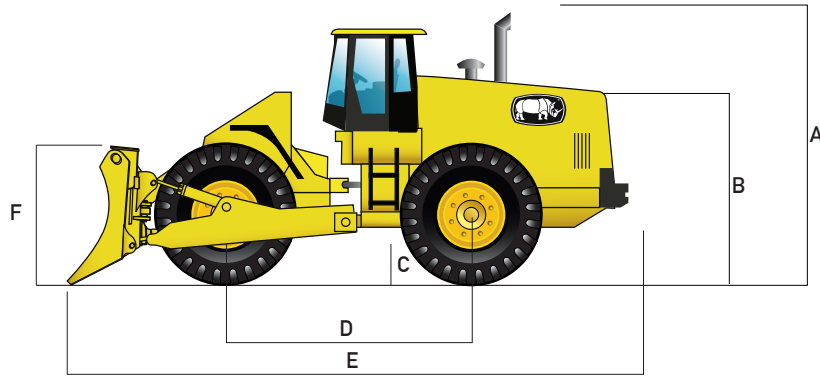
TIRES/WHEELS

	Tread Width mm (in)	Width Over Tires mm (in)
20.5 R 25 16 Ply	2,050(80.7)	2,570(101.2)

REFILL CAPACITIES L (gal)	
Fuel Tank	200(53)
Cooling System	17(4)
Engine Oil	13.5(4)
Transmission Fluid	45(12)
Axle Oil (Front and Rear, each)	20(5)
Hydraulic Tank	150(40)
Brake System (Front and Rear Booster Pump, each)	1.5(0.4)
HYDRAULIC SYSTEM/STEERING	
Pump (Loader and Steering)	Gear Pump, variable displacement, closed-center
Max. Rated Flow at 2,200 rpm L/min (gpm)	115(30)
System Relief Pressure (Loader and Steering) Mpa (psi)	17(2,466)
Loader Controls	Dual-multiway valve, joystick control
STEERING	
Type	Articulated frame, fully hydraulic
Articulation Angle	35 degrees
Turning Radius (measured to centerline of outside tire) mm (ft)	5,730(18.8)
Hydraulic Cycle Times	Z-Bar
Raise sec.	6.2
Dump sec.	3.8
Lower sec.	1.8
Total sec.	11.8

Wheel Dozer operating information is based on machine with identified linkage and standard equipment, standard tires, full fuel tank, and 79-kg (175 lb.) operator. This information is affected by changes in tires, ballast, and different attachments.

Equipment specifications and images may change without notice from Rhino Equipment Group Inc.

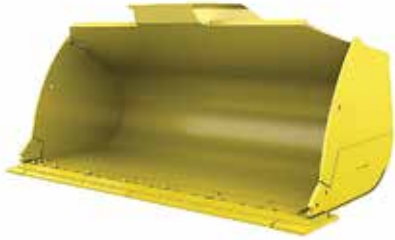


DIMENSIONS WITH STRAIGHT BLADE

A Height to Top of Cab and Canopy mm (ft)	3,430(11.3)
B Hood Height mm (ft)	3,310(10.9)
C Ground Clearance mm (ft)	400(1.3)
D Wheel base mm (ft)	3,080(10.1)
E Overall Length (ft)	7,248(23.8)
F. Blade Height mm (ft)	1,030(3.4)
Blade Width mm (ft)	3,800(12.5)
Blade Lift Height mm (in)	1,030(40.6)
Blade Digging Depth mm (in)	370(14.6)
Blade Cutting-Edge Angle	55 degrees
Blade Capacity m ³ (cu. Yd)	3.0(3.9)
Blade Tilt mm (in)	450(17.7)



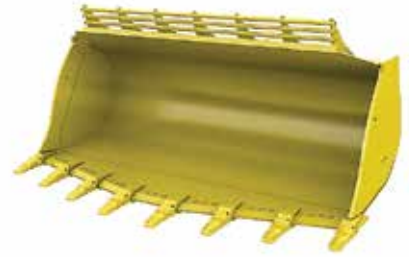
ATTACHMENTS



Material Handling Bucket



Waste Bucket



Rock Bucket



Slag Bucket



Multi-Purpose Bucket



Multi-Purpose Blades



Grapple Forks



Lumber Forks



Pallet Forks



The attachments shown are for reference only; the final product may be different from the images shown.

For more options contact your nearest dealer.

Equipment specifications and images may change without notice from Rhino Equipment Group Inc.

www.rhinoeq.com