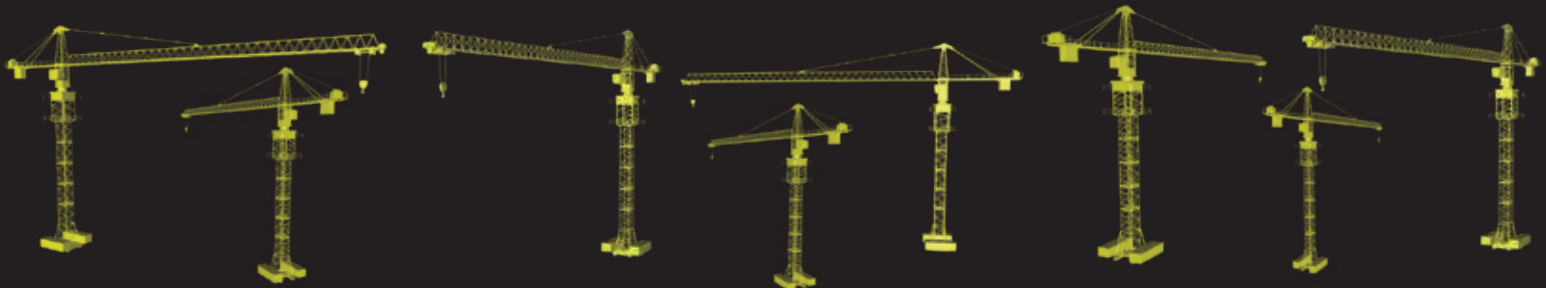




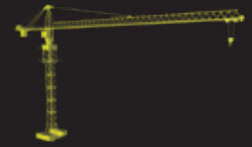
TOWER CRANES

RTC 6014B





TOWER CRANES DIVISION



Rhino Tower Cranes are economical to transport, fast and easy to set up and have innovative drivelines. These cranes are powerful enough for medium to large construction projects. The individual crane components can be transported in the order in which they are later assembled.

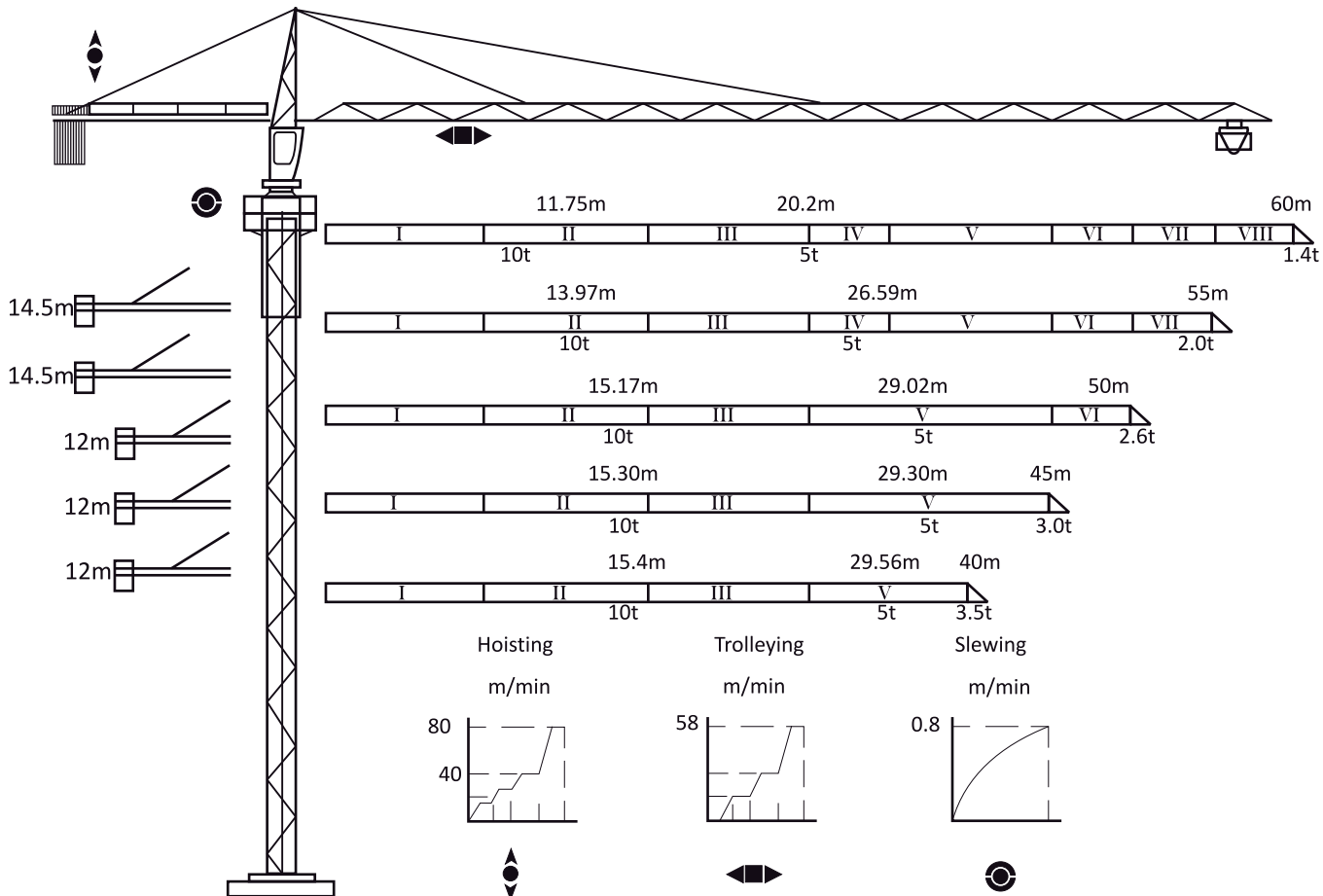
It comprises machines of all systems and size categories, with the ideal lifting technology for any civil engineering task.

The highly adaptable fast-erecting cranes and the efficient top-slewing cranes have proved their worth both in the construction of residential buildings and on large-scale industrial projects all over the world.

The Rhino Tower Cranes have their reputation for being easy to adapt to their working environment: sites which are high up, crowded or widely spread. They make it possible to hoist and distribute loads be a easy work.



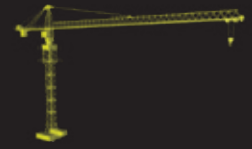
RTC 6014B



Anchoring 46.2 Climbing 200



TOWER CRANES DIVISION



Load Capacities	US Tons	Tons	Lb
Radius			
At 2.5m - 11.8m (8 ft - 39 ft)	11	10	20,000
At 15 m (49 ft)	7.9	7.14	14,280
At 25 m (82 ft)	4.2	3.83	7,660
At 30 m (98 ft)	3.2	2.93	5,860
At 35 m (115 ft)	2.6	2.33	4,660
At 40 m (131 ft)	2.1	1.88	3,760
At 45 m (148 ft)	1.7	1.54	3,080
At 50 m (164 ft)	1.4	1.26	2,520
At 55 m (180 ft)	1.1	1.04	2,080
At 60 m (197 ft)	0.9	0.85	1,700

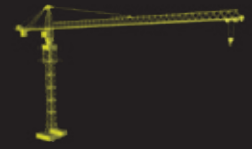
PERFORMANCE	Metric	US
Normal Hoisting Moment	1,250 KNm	921,953 ft-lb
Rated Hoisting Weight at Jib Nose	0.9 tons	1,800 lb
Working Radius	2.5 - 60 m	8 - 197 ft
Rear Swing Radius	13 m	42.7 ft
Max. Working Wind Speed	20 m/s	66 ft/s
Max. Wind Speed for Top Rising	13 m/s	43 ft/s
Ambient Temperature Working Range	-20 to 40 °C	-4 to 104 °F

Height		
Standard Height	46 m	150.9 ft
Max. Height	200 m	656 ft

Equipment specifications and images may change without notice from Rhino Equipment Group Inc.



TOWER CRANES DIVISION



PERFORMANCE					Metric	US
Reach					60 m	196.9 ft
Max. Capacity					10 tons	20,000 lb
Hoisting Speed		Hoisting Speed		Hoisting Weight		
Working Modes	m/min	ft/min	US tons	tons	lb	
2x Speed	40	131	5.5	5	10,000	
	80	262	3.3	3	6,000	
4x Speed	20	66	11	10	20,000	
	40	131	2.2	2	4,000	
Working Modes					4x Speed	
Swing Speed					0 rpm - 0.8 rpm	
Radius Changing Speed					60 m/min	197 ft/min
Top Rising Speed					0.4 m/min	1 ft/min
Operating Weights					tons	lb
Net Weight					109	218,000
Ballast Weight					17	34,000
Total Weight (with anchoring)					126	252,000

Equipment specifications and images may change without notice from Rhino Equipment Group Inc.