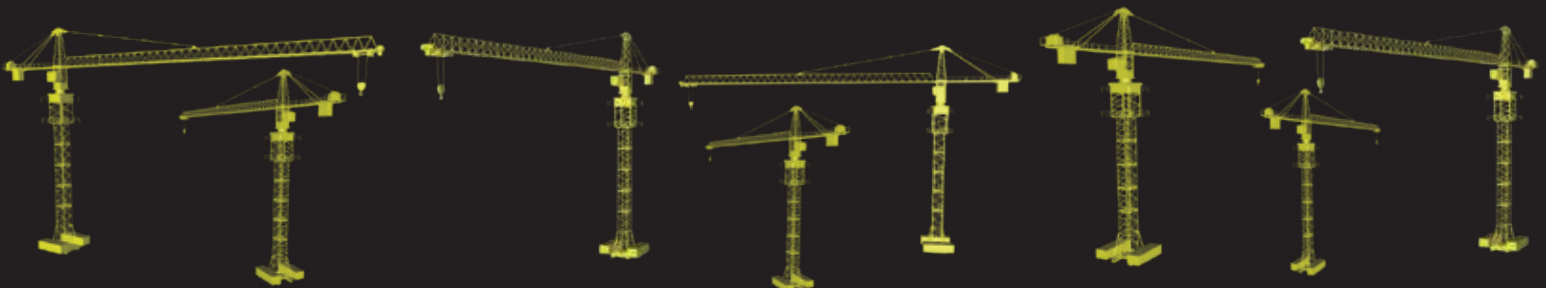




TOWER CRANES

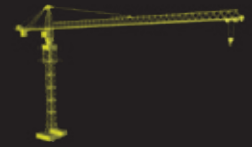
RTC 6014



rhinoeq.com



TOWER CRANES DIVISION



Rhino Tower Cranes are economical to transport, fast and easy to set up and have innovative drivelines. These cranes are powerful enough for medium to large construction projects. The individual crane components can be transported in the order in which they are later assembled.

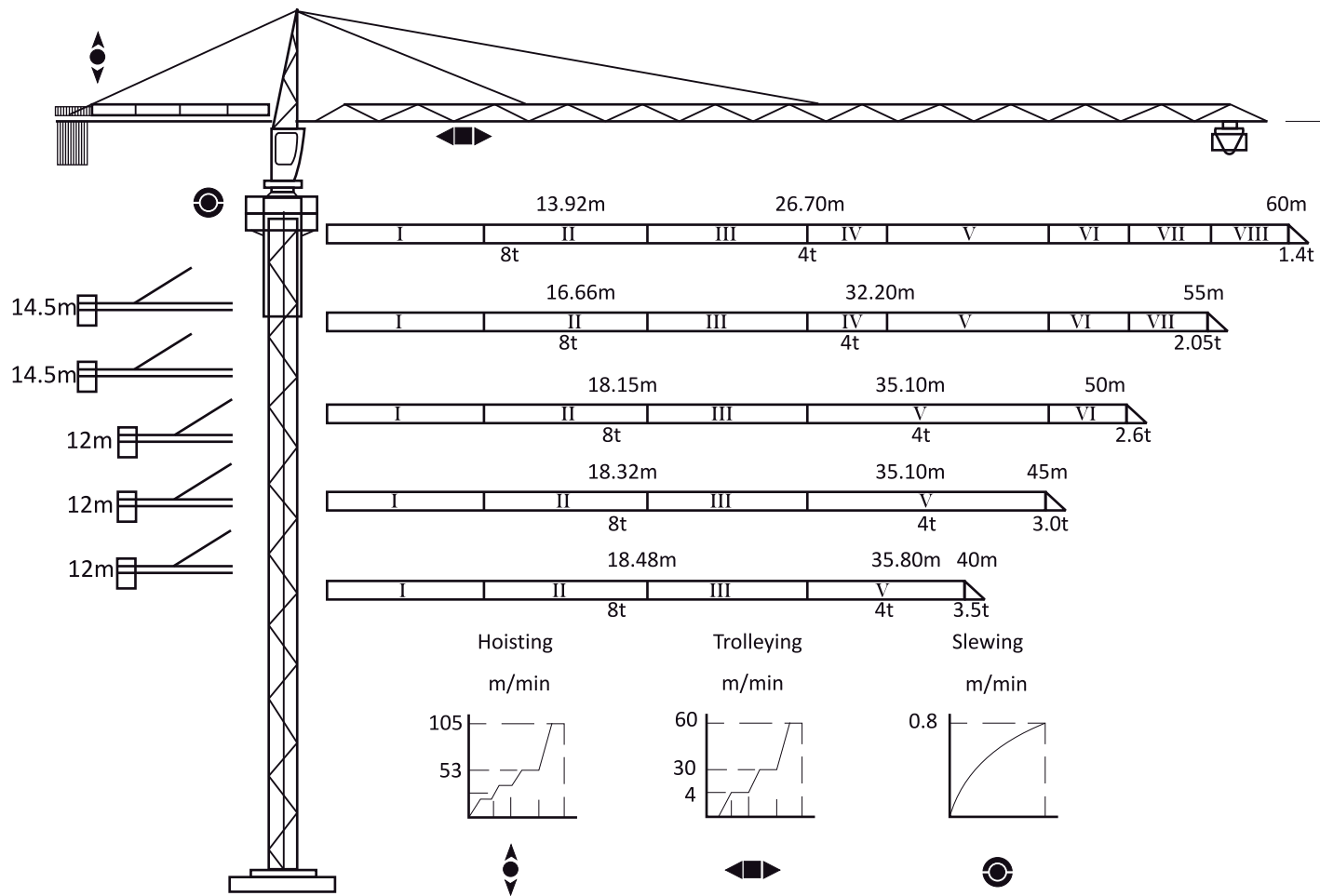
It comprises machines of all systems and size categories, with the ideal lifting technology for any civil engineering task.

The highly adaptable fast-erecting cranes and the efficient top-slewing cranes have proved their worth both in the construction of residential buildings and on large-scale industrial projects all over the world.

The Rhino Tower Cranes have their reputation for being easy to adapt to their working environment: sites which are high up, crowded or widely spread. They make it possible to hoist and distribute loads be a easy work.



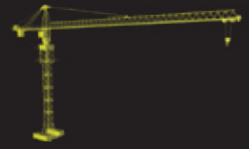
RTC 6014



Anchoring 46.2 Climbing 161



TOWER CRANES DIVISION



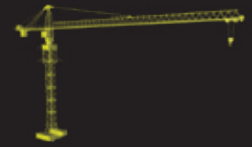
Load Capacities	US Tons	Tons	Lb
Radius			
At 2.5m - 11.8m (8 ft - 39 ft)	8.8	8	16,000
At 15 m (49 ft)	7.9	7.14	14,280
At 25 m (82 ft)	4.2	3.83	7,660
At 30 m (98 ft)	3.2	2.93	5,860
At 35 m (115 ft)	2.6	2.33	4,660
At 40 m (131 ft)	2.1	1.88	3,760
At 45 m (148 ft)	1.7	1.54	3,080
At 50 m (164 ft)	1.4	1.26	2,520
At 55 m (180 ft)	1.1	1.04	2,080
At 60 m (197 ft)	0.9	0.85	1,700

PERFORMANCE	Metric	US
Normal Hoisting Moment	1,250 KNm	921,953 ft-lb
Rated Hoisting Weight at Jib Nose	0.9 tons	1,800 lb
Working Radius	2.5 - 60 m	8 - 197 ft
Rear Swing Radius	13 m	42.7 ft
Max. Working Wind Speed	20 m/s	66 ft/s
Max. Wind Speed for Top Rising	13 m/s	43 ft/s
Ambient Temperature Working Range	-20 to 40 °C	-4 to 104 °F
Height		
Standard Height	46 m	150.9 ft
Max. Height	161 m	528 ft

Equipment specifications and images may change without notice from Rhino Equipment Group Inc.



TOWER CRANES DIVISION



PERFORMANCE		Metric	US		
Reach		60 m	196.9 ft		
Max. Capacity		8 tons	16,000 lb		
Hoisting Speed		Hoisting Speed		Hoisting Weight	
Working Modes	m/min	ft/min	US tons	tons	lb
2x Speed	26	85	8.8	8	16,000
	53	174	4.4	4	8,000
4x Speed	53	174	4.4	4	8,000
	105	344	2.2	2	4,000
Working Modes					4x Speed
Swing Speed	0 rpm - 0.8 rpm				
Radius Changing Speed	58 m/min		190 ft/min		
Top Rising Speed	0.4 m/min		1 ft/min		
Operating Weights		tons	lb		
Net Weight	99		198,000		
Ballast Weight	17		34,000		
Total Weight (with anchoring)	116		232,000		

Equipment specifications and images may change without notice from Rhino Equipment Group Inc.