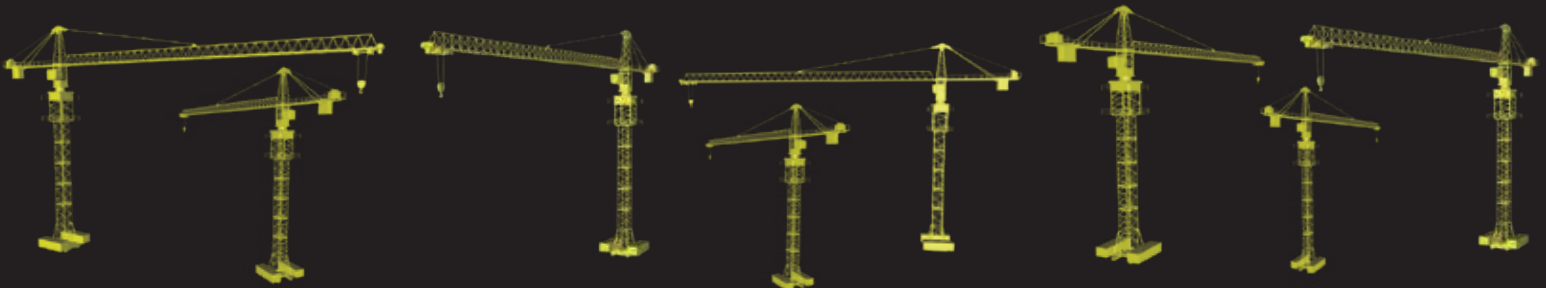




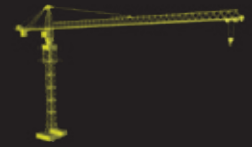
TOWER CRANES

RTC 5512





TOWER CRANES DIVISION



Rhino Tower Cranes are economical to transport, fast and easy to set up and have innovative drivelines. These cranes are powerful enough for medium to large construction projects. The individual crane components can be transported in the order in which they are later assembled.

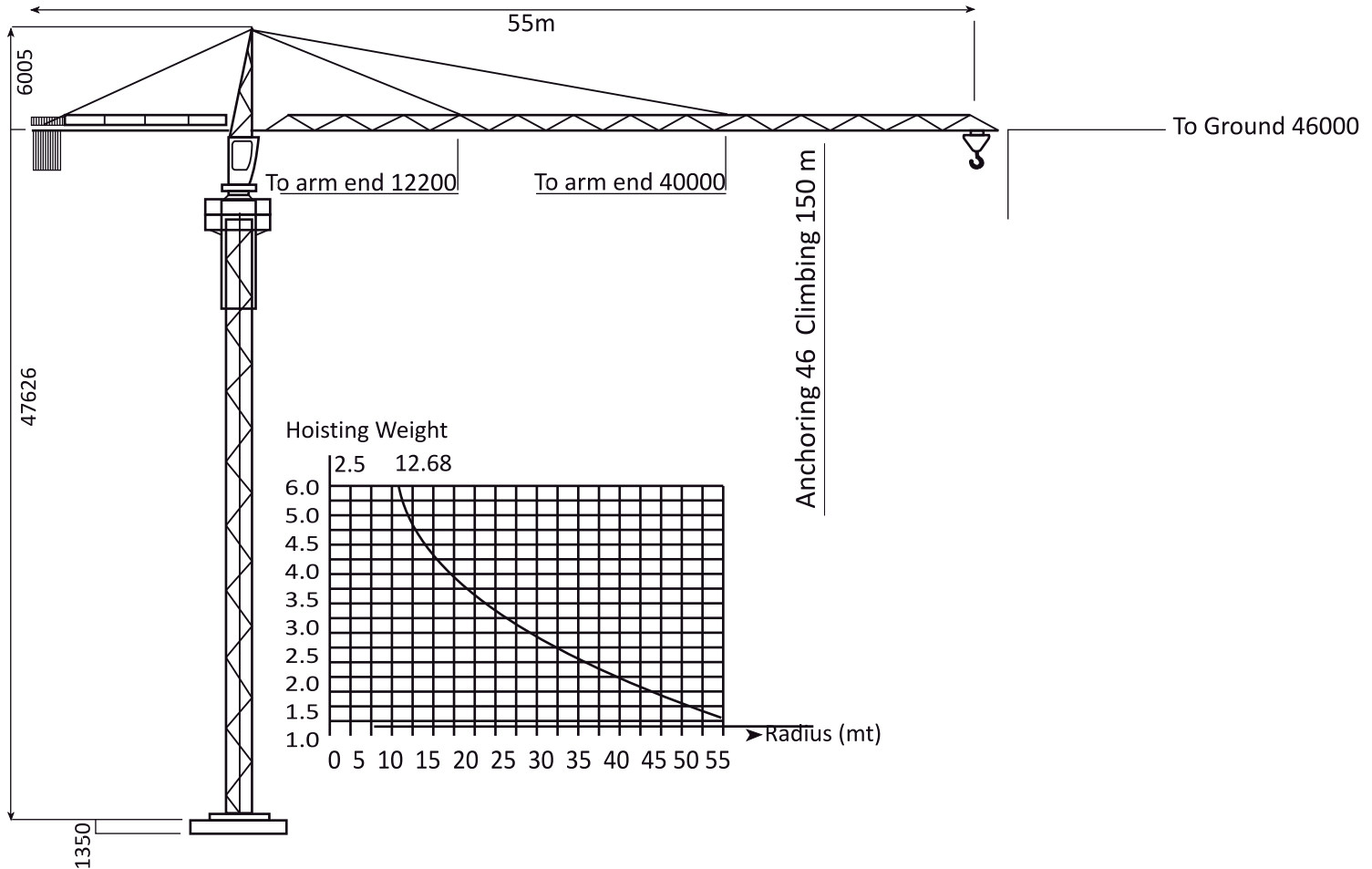
It comprises machines of all systems and size categories, with the ideal lifting technology for any civil engineering task.

The highly adaptable fast-erecting cranes and the efficient top-slewing cranes have proved their worth both in the construction of residential buildings and on large-scale industrial projects all over the world.

The Rhino Tower Cranes have their reputation for being easy to adapt to their working environment: sites which are high up, crowded or widely spread. They make it possible to hoist and distribute loads be a easy work.

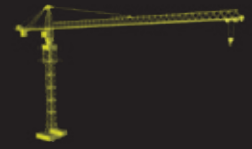


RTC 5512





TOWER CRANES DIVISION

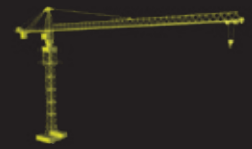


Load Capacities	US Tons	Tons	Lb
Radius			
At 2.5m - 12.68m (8 ft - 42 ft) - tons (lb)	8.8	8.0	16,000
At 14 m (46 ft)	7.9	7.13	14,260
At 16 m (53 ft)	6.0	6.09	12,180
At 18 m (59 ft)	4.9	5.30	10,600
At 20 m (66 ft)	4.3	4.67	9,340
At 21 m (69 ft)	3.9	4.40	8,800
At 22.5 m (74 ft)	3.5	4.00	8,000
At 26 m (85 ft)	3.3	3.74	7,480
At 28 m (92 ft)	2.9	3.09	6,180
At 30 m (98 ft)	2.7	2.83	5,660
At 32 m (105 ft)	2.5	2.60	5,200
At 34 m (112 ft)	2.3	2.40	4,800
At 35 m (115 ft)	2.2	2.31	4,620
At 36 m (118 ft)	2.2	2.23	4,460
At 38 m (125 ft)	2.0	2.07	4,140
At 40 m (131 ft)	1.9	1.93	3,860
At 42 m (138 ft)	1.8	1.58	3,160
At 44 m (144 ft)	1.7	1.48	2,960
At 46 m (151 ft)	1.6	1.39	2,780
At 48 m (158 ft)	1.5	1.31	2,620
At 55 m (180 ft)	1.4	1.20	2,400

Equipment specifications and images may change without notice from Rhino Equipment Group Inc.



TOWER CRANES DIVISION



PERFORMANCE		Metric	US			
Normal Hoisting Moment		800 KNm	590,050 ft-lb			
Rated Hoisting Weight at Jib Nose		1.2 t	2,400 lb			
Working Radius		2.5-55 m	8 - 158 ft			
Rear Swing Radius		12 m	39.6 ft			
Max. Working Wind Speed		20 m/s	66 ft/s			
Max. Wind Speed for Top Rising		13 m/s	43 ft/s			
Ambient Temperature Working Range		-20 to 40 °C	-4 to 104 °F			
Height						
Standard Height		46 m	150.9 ft			
Max. Height		150 m	492 ft			
Reach		55 m	180.4 ft			
Max. Capacity		8 t	16,000 lb			
Hoisting Speed		Hoisting Speed		Hoisting Weight		
Working Modes		m/min	ft/min	US tons	tons	lb
		7	23	3.3	4.4	8,000
2x Speed		40	131	3.3	4.4	8,000
		80	262	1.7	1.7	3,000
4x Speed		4	11	6.6	8.8	16,000
		20	66	6.6	8.8	16,000
		40	131	3.3	4.4	8,000
Working Modes		2x Speed		4x Speed		
Swing Speed		0 - 0.66 rpm				
Radius Changing Speed		10 m/min	33 ft/min	60 m/min	197 ft/min	
Top Rising Speed		0.4 m/min	1 ft/min			
Operating Weights		tons	lb			
Net Weights		41	82,400			
Ballast Weight		13	25,200			
Total Weight (with anchoring)		54	107,600			

Equipment specifications and images may change without notice from Rhino Equipment Group Inc.