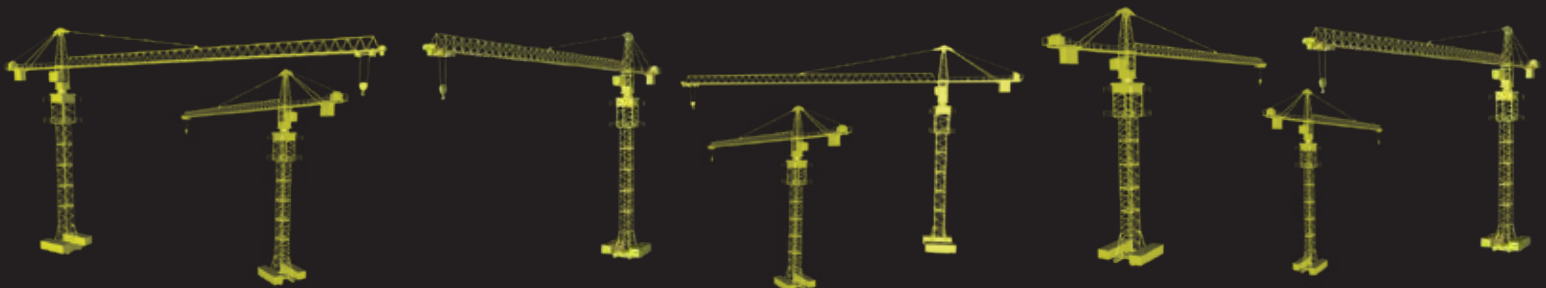




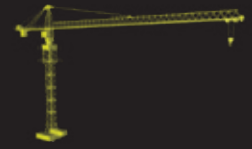
TOWER CRANES

RTC 5013





TOWER CRANES DIVISION



Rhino Tower Cranes are economical to transport, fast and easy to set up and have innovative drivelines. These cranes are powerful enough for medium to large construction projects. The individual crane components can be transported in the order in which they are later assembled.

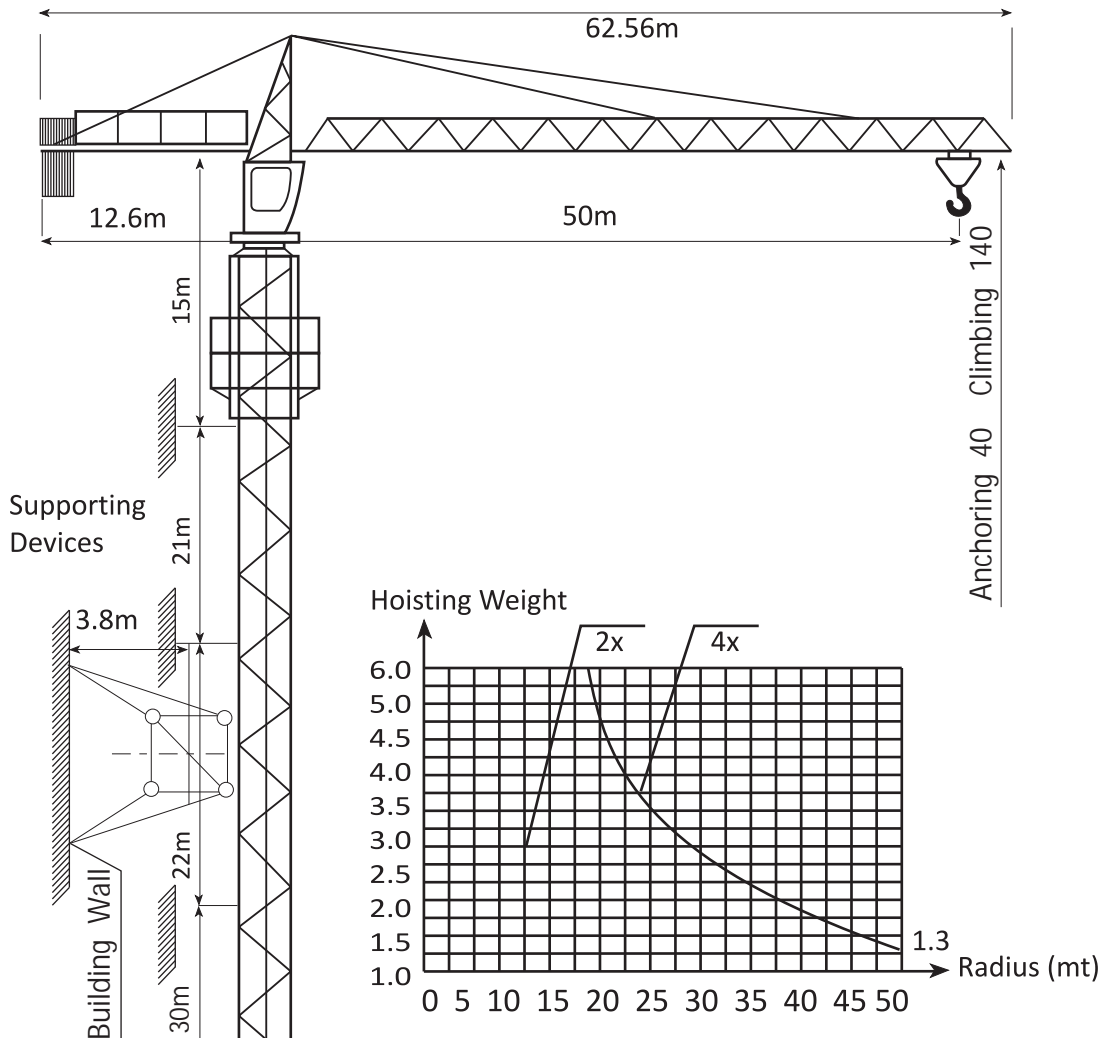
It comprises machines of all systems and size categories, with the ideal lifting technology for any civil engineering task.

The highly adaptable fast-erecting cranes and the efficient top-slewing cranes have proved their worth both in the construction of residential buildings and on large-scale industrial projects all over the world.

The Rhino Tower Cranes have their reputation for being easy to adapt to their working environment: sites which are high up, crowded or widely spread. They make it possible to hoist and distribute loads be a easy work.

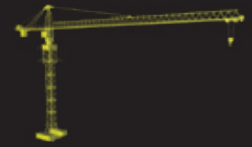


RTC 5013





TOWER CRANES DIVISION

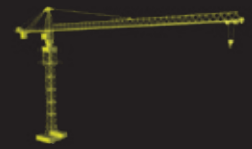


Load Capacities	US Tons	Tons	Lb
Radius			
At 2.5m - 13.7m (8 ft - 45 ft) - tons (lb)	6.6	6.0	12,000
At 16 m (53 ft)	6.0	5.46	10,920
At 18 m (59 ft)	4.9	4.41	8,820
At 20 m (66 ft)	4.3	3.91	7,820
At 22 m (72 ft)	3.9	3.51	7,020
At 24 m (79 ft)	3.5	3.18	6,360
At 25 m (82 ft)	3.3	3.00	6,000
At 28 m (92 ft)	2.9	2.65	5,300
At 30 m (98 ft)	2.7	2.45	4,900
At 32 m (105 ft)	2.5	2.26	4,520
At 34 m (112 ft)	2.3	2.10	4,200
At 35 m (115 ft)	2.2	2.03	4,060
At 36 m (118 ft)	2.2	1.96	3,920
At 38 m (125 ft)	2.0	1.84	3,680
At 40 m (131 ft)	1.9	1.72	3,440
At 42 m (138 ft)	1.8	1.62	3,240
At 44 m (144 ft)	1.7	1.53	3,060
At 46 m (151 ft)	1.6	1.44	2,880
At 48 m (158 ft)	1.5	1.37	2,740
At 50 m (164 ft)	1.4	1.30	2,600

Equipment specifications and images may change without notice from Rhino Equipment Group Inc.



TOWER CRANES DIVISION



PERFORMANCE		Metric	US		
Normal Hoisting Moment		760 KNm	560,547 ft-lb		
Rated Hoisting Weight at Jib Nose		1.3 t	2,600 lb		
Working Radius		2.5-50 m	8 - 158 ft		
Rear Swing Radius		12 m	39.6 ft		
Max. Working Wind Speed		20 m/s	66 ft/s		
Max. Wind Speed for Top Rising		13 m/s	43 ft/s		
Ambient Temperature Working Range		-20 to 40 °C	-4 to 104 °F		
Height					
Standard Height		40 m	131.2 ft		
Max. Height		140 m	459 ft		
Reach		50 m	164.0 ft		
Max. Capacity		6 t	12,000 lb		
Hoisting Speed	Hoisting Speed		Hoisting Weight		
Working Modes	m/min	ft/min	US tons	tons	lb
2x Speed	8	26	3.3	3	6,000
	40	131	3.3	3	6,000
	80	262	1.7	2	3,000
4x Speed	4	13	6.6	6	12,000
	20	66	6.6	6	12,000
	40	131	3.3	3	6,000
Working Modes	2x Speed		4x Speed		
Swing Speed	0 - 0.7 rpm				
Radius Changing Speed	22 m/min	72 ft/min	44 m/min	144 ft/min	
Top Rising Speed	0.5 m/min	2 ft/min			
Operating Weights			tons	lb	
Net Weights			34	67,800	
Ballast Weight			12	24,000	
Total Weight (with anchoring)			46	91,800	

Equipment specifications and images may change without notice from Rhino Equipment Group Inc.