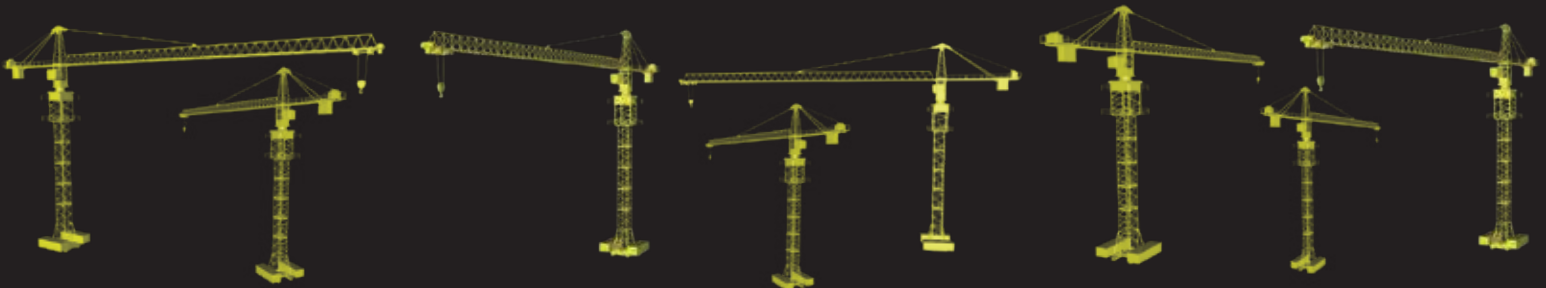




TOWER CRANES

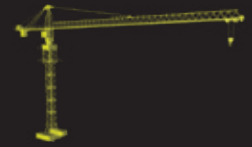
RTC 4807



rhinoeq.com



TOWER CRANES DIVISION



Rhino Tower Cranes are economical to transport, fast and easy to set up and have innovative drivelines. These cranes are powerful enough for medium to large construction projects. The individual crane components can be transported in the order in which they are later assembled.

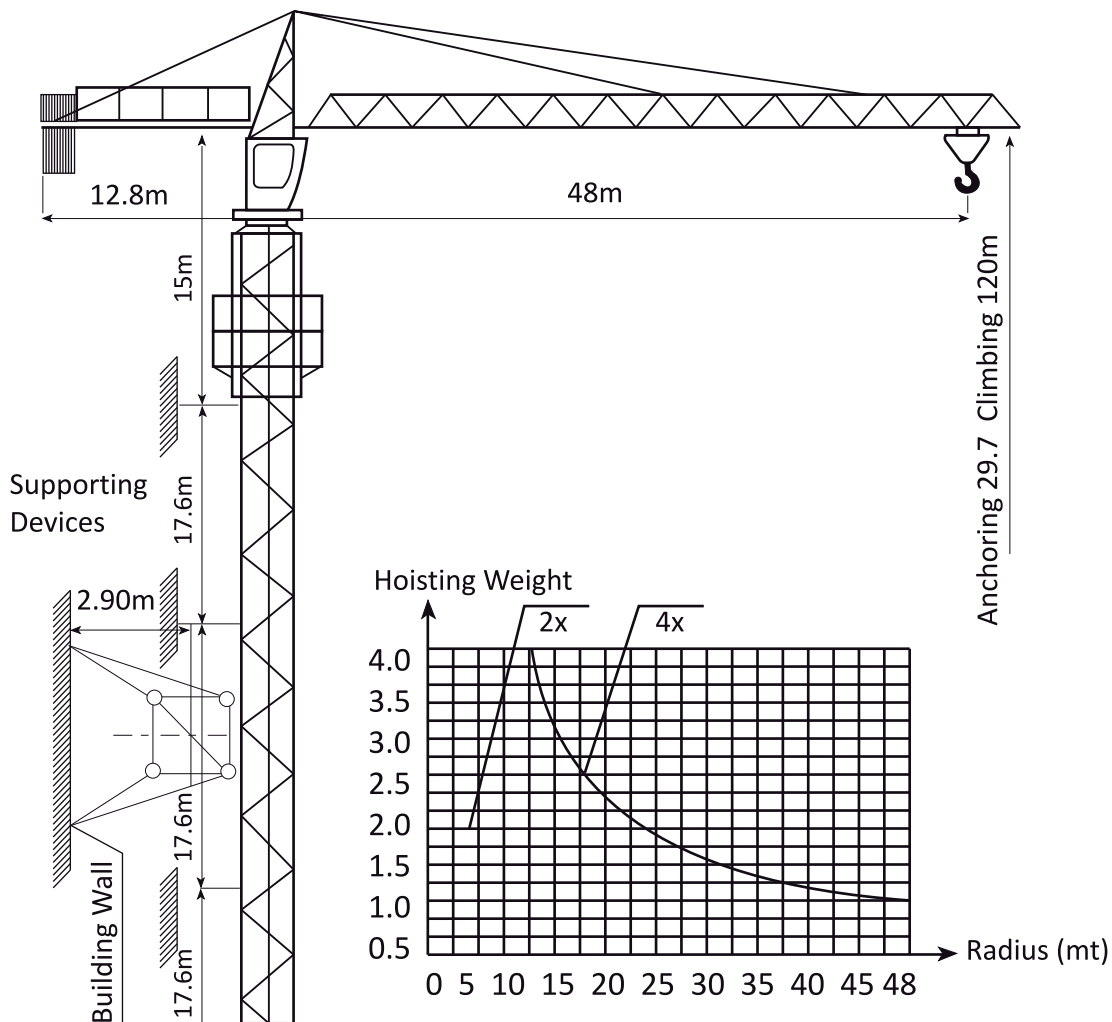
It comprises machines of all systems and size categories, with the ideal lifting technology for any civil engineering task.

The highly adaptable fast-erecting cranes and the efficient top-slewing cranes have proved their worth both in the construction of residential buildings and on large-scale industrial projects all over the world.

The Rhino Tower Cranes have their reputation for being easy to adapt to their working environment: sites which are high up, crowded or widely spread. They make it possible to hoist and distribute loads be a easy work.

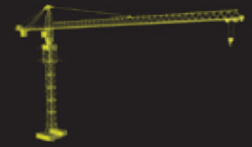


RTC 4807





TOWER CRANES DIVISION

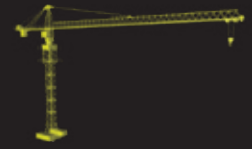


Load Capacities	US Tons	Tons	Lb
Radius			
At 2.5m - 10.7m (8 ft - 35 ft)	4.4	4.0	8,000
At 12 m (46 ft)	3.9	3.51	7,020
At 13 m (52 ft)	3.5	3.21	6,420
At 14 m (59 ft)	3.3	2.96	5,920
At 15 m (66 ft)	3.0	2.74	5,480
At 16 m (72 ft)	2.8	2.56	5,120
At 18 m (79 ft)	2.5	2.25	4,500
At 26 m (85 ft)	2.2	2.00	4,000
At 28 m (92 ft)	2.0	1.81	3,620
At 30 m (98 ft)	1.8	1.65	3,300
At 32 m (105 ft)	1.7	1.51	3,020
At 34 m (112 ft)	1.5	1.39	2,780
At 36 m (118 ft)	1.4	1.29	2,580
At 38 m (125 ft)	1.3	1.20	2,400
At 40 m (131 ft)	1.2	1.12	2,240
At 42 m (138 ft)	0.9	0.85	1,700
At 44 m (144 ft)	0.9	0.80	1,600
At 46 m (151 ft)	0.8	0.75	1,500
At 48 m (154 ft)	0.8	0.71	1,420

Equipment specifications and images may change without notice from Rhino Equipment Group Inc.



TOWER CRANES DIVISION



PERFORMANCE		Metric	US			
Normal Hoisting Moment		400 KNm	295,025 ft-lb			
Rated Hoisting Weight at Jib Nose		0.7 t	1,420 lb			
Working Radius		2.5-48 m	8 - 158 ft			
Rear Swing Radius		13 m	42.0 ft			
Max. Working Wind Speed		20 m/s	66 ft/s			
Max. Wind Speed for Top Rising		13 m/s	43 ft/s			
Ambient Temperature Working Range		-20 to 40 °C	-4 to 104 °F			
Height						
Standard Height		30 m	92.8 ft			
Max. Height		120 m	394 ft			
Reach		48 m	157.5 ft			
Max. Capacity		4 t	8,000 lb			
Hoisting Speed		Hoisting Speed		Hoisting Weight		
Working Modes		m/min	ft/min	US tons	tons	lb
		8	26	2.2	2	4,000
2x Speed		34	112	2.2	2	4,000
		52	171	1.1	1	2,000
4x Speed		4	13	4.4	4	8,000
		17	56	4.4	4	8,000
		26	85	2.2	2	4,000
Working Modes		2x Speed		4x Speed		
Swing Speed		0 - 0.7 rpm		0 - 0.7 rpm		
Radius Changing Speed		17 m/min	54 ft/min	33 m/min	108 ft/min	
Top Rising Speed		0.7 m/min	2 ft/min			
Operating Weights				tons	lb	
Ballast Weight				6	12,600	
Total Weight (with anchoring)				26	51,400	

Equipment specifications and images may change without notice from Rhino Equipment Group Inc.