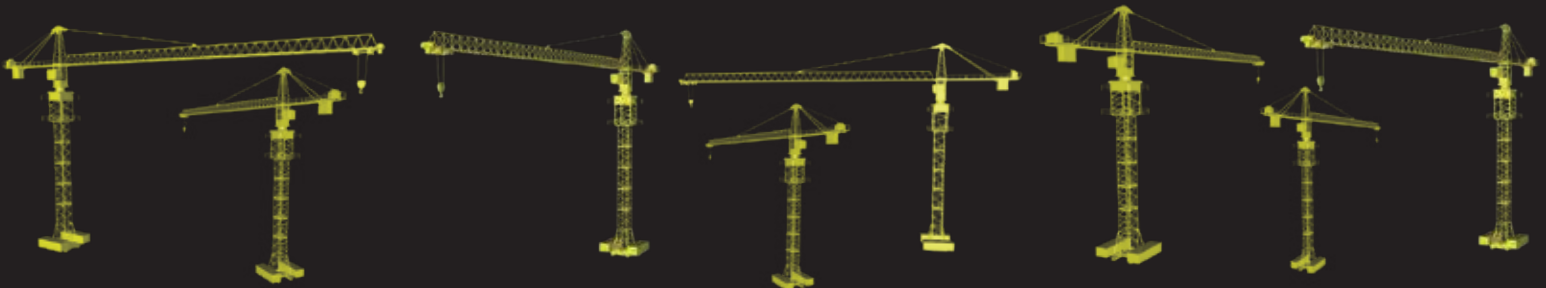




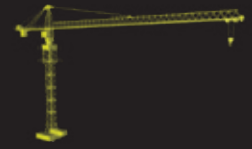
TOWER CRANES

RTC 4708





TOWER CRANES DIVISION



Rhino Tower Cranes are economical to transport, fast and easy to set up and have innovative drivelines. These cranes are powerful enough for medium to large construction projects. The individual crane components can be transported in the order in which they are later assembled.

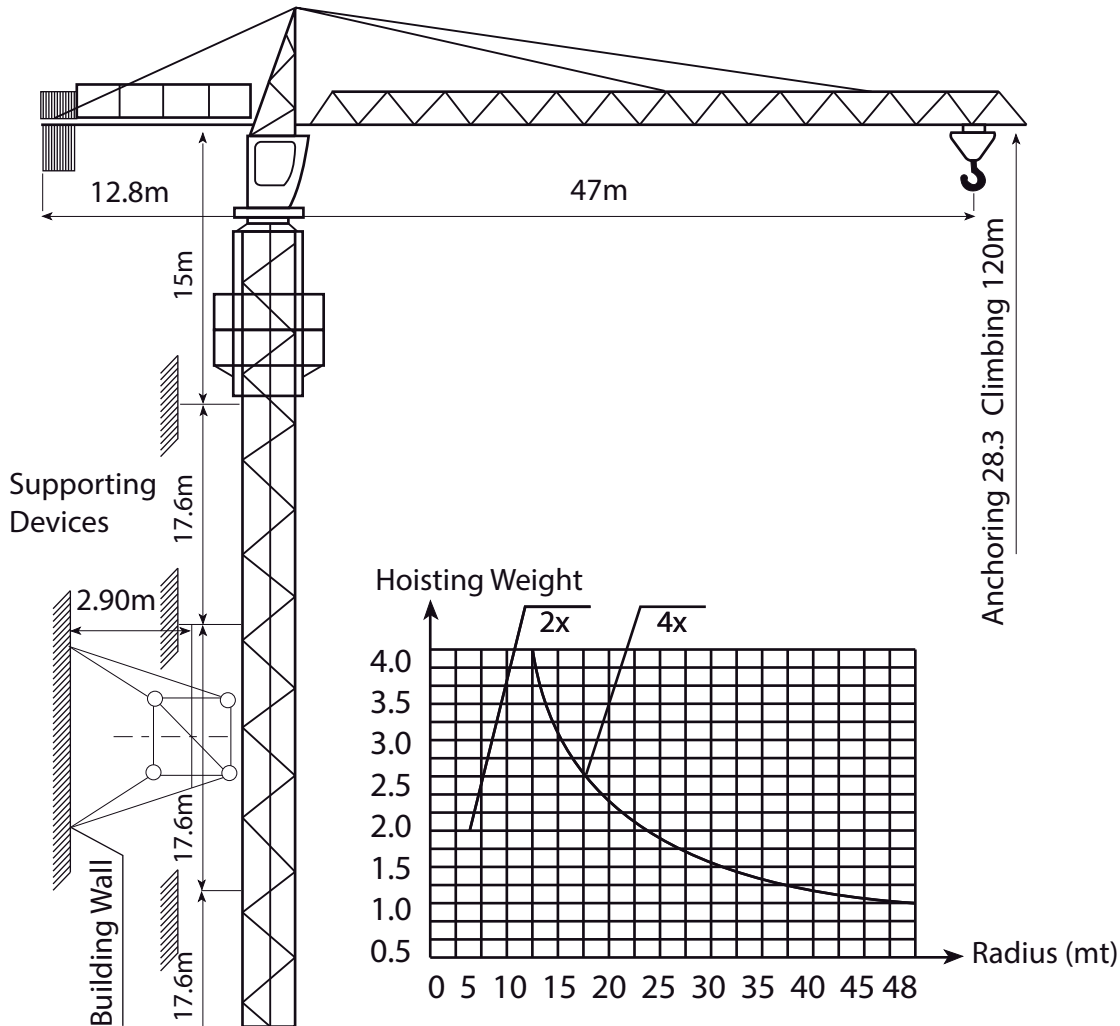
It comprises machines of all systems and size categories, with the ideal lifting technology for any civil engineering task.

The highly adaptable fast-erecting cranes and the efficient top-slewing cranes have proved their worth both in the construction of residential buildings and on large-scale industrial projects all over the world.

The Rhino Tower Cranes have their reputation for being easy to adapt to their working environment: sites which are high up, crowded or widely spread. They make it possible to hoist and distribute loads be a easy work.

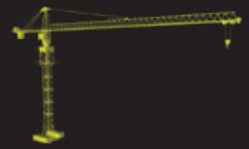


RTC 4708





TOWER CRANES DIVISION

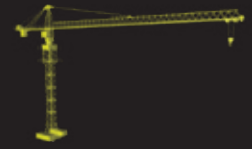


Load Capacities	US Tons	Tons	Lb
Radius			
At 2.5m - 12.3m (8 ft - 40 ft)	4.4	4.0	8,000
At 14 m (46 ft)	3.8	3.45	6,900
At 16 m (52 ft)	3.3	2.95	5,900
At 18 m (59 ft)	2.8	2.58	5,160
At 20 m (66 ft)	2.5	2.28	4,560
At 22 m (72 ft)	2.2	2.04	4,080
At 24 m (79 ft)	2.0	1.84	3,680
At 26 m (85 ft)	1.8	1.67	3,340
At 28 m (92 ft)	1.7	1.50	3,000
At 30 m (98 ft)	1.6	1.41	2,820
At 32 m (105 ft)	1.4	1.30	2,600
At 34 m (112 ft)	1.3	1.21	2,420
At 36 m (118 ft)	1.2	1.13	2,260
At 38 m (125 ft)	1.2	1.05	2,100
At 40 m (131 ft)	1.1	1.00	2,000
At 42 m (138 ft)	1.0	0.93	1,860
At 44 m (144 ft)	1.0	0.87	1,740
At 46 m (151 ft)	0.9	0.82	1,640
At 47 m (154 ft)	0.9	0.80	1,600

Equipment specifications and images may change without notice from Rhino Equipment Group Inc.



TOWER CRANES DIVISION



PERFORMANCE		Metric	US		
Normal Hoisting Moment		400 KNm	295,025 ft-lb		
Rated Hoisting Weight at Jib Nose		0.8 t	1,600 lb		
Working Radius		2.5-47 m	8 - 154 ft		
Rear Swing Radius		13 m	42.0 ft		
Max. Working Wind Speed		20 m/s	66 ft/s		
Max. Wind Speed for Top Rising		13 m/s	43 ft/s		
Ambient Temperature Working Range		-20 to 40 °C	-4 to 104 °F		
Height					
Standard Height		28 m	92.8 ft		
Max. Height		120 m	394 ft		
Reach		47 m	154.2 ft		
Max. Capacity		4 t	8,000 lb		
Hoisting Speed	Hoisting Speed		Hoisting Weight		
Working Modes	m/min	ft/min	US tons	tons	lb
2x Speed	8	26	2.2	2	4,000
	34	112	2.2	2	4,000
	52	171	1.1	1	2,000
4x Speed	4	13	4.4	4	8,000
	17	56	4.4	4	8,000
	26	85	2.2	2	4,000
Working Modes	2x Speed		4x Speed		
Swing Speed	0 - 0.7 rpm		0 - 0.7 rpm		
Radius Changing Speed	17 m/min	54 ft/min	33 m/min	108 ft/min	
Top Rising Speed	0.7 m/min	2 ft/min			
Operating Weights			tons	lb	
Ballast Weight			7	13,100	
Total Weight (with anchoring)			25	49,000	

Equipment specifications and images may change without notice from Rhino Equipment Group Inc.