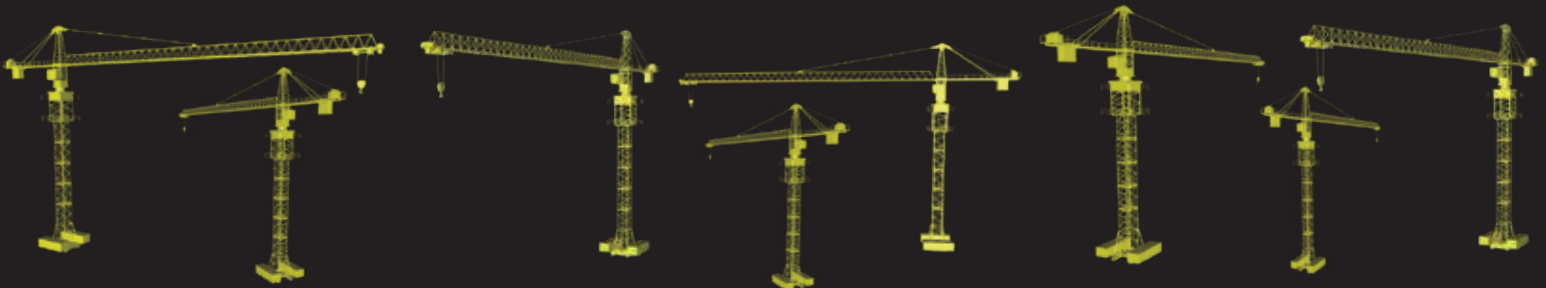




TOWER CRANES

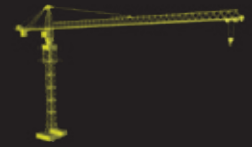
RTC 2325



[rhinoeq.com](http://rhinoeq.com)



# TOWER CRANES DIVISION



Rhino Tower Cranes are economical to transport, fast and easy to set up and have innovative drivelines. These cranes are powerful enough for medium to large construction projects. The individual crane components can be transported in the order in which they are later assembled.

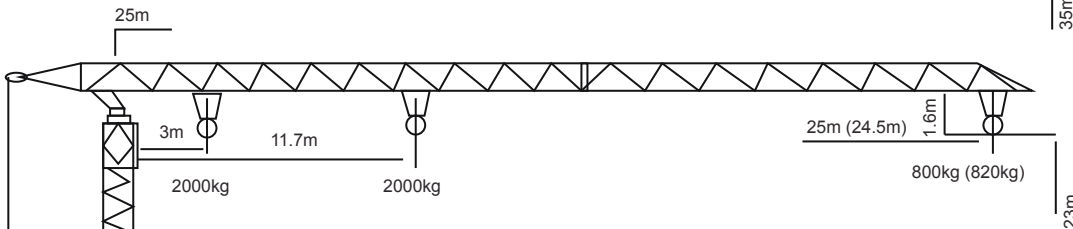
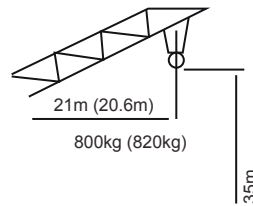
It comprises machines of all systems and size categories, with the ideal lifting technology for any civil engineering task.

The highly adaptable fast-erecting cranes and the efficient top-slewing cranes have proved their worth both in the construction of residential buildings and on large-scale industrial projects all over the world.

The Rhino Tower Cranes have their reputation for being easy to adapt to their working environment: sites which are high up, crowded or widely spread. They make it possible to hoist and distribute loads be a easy work.

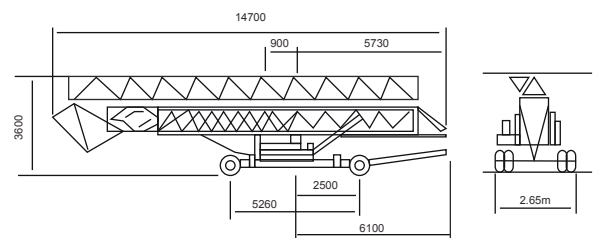
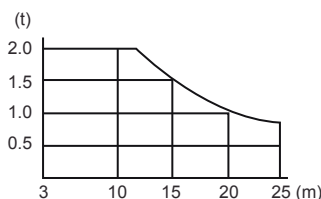


## RTC 2325



R(m)	11.7-3	12	13	14	15	16	17	18
Q(kg)	2000	1941	1764	1615	1487	1397	1280	1195
R(m)	19	20	21	22	23	24	24.5	25
Q(kg)	1120	1052	992	937	887	840	820	800

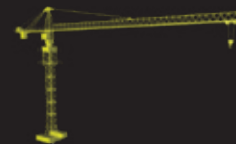
Overall Dimensions of Highway Transportation



ISO9001 QUALITY MANAGEMENT SYSTEM CERTIFIED



# TOWER CRANES DIVISION



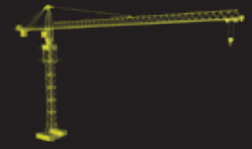
Load Capacities	US Tons	Tons	Lb
<b>Radius</b>			
At 3m - 11.7m (9.8 ft - 38 ft)	2.2	2.0	4,000
At 12 m (39 ft)	2.1	1.94	3,880
At 13 m (43 ft)	1.9	1.76	3,520
At 14 m (46 ft)	1.8	1.62	3,240
At 15 m (49 ft)	1.6	1.49	2,980
At 16 m (52 ft)	1.5	1.40	2,800
At 17 m (56 ft)	1.4	1.28	2,560
At 18 m (59 ft)	1.3	1.20	2,400
At 19 m (62 ft)	1.2	1.12	2,240
At 20 m (66 ft)	1.2	1.05	2,100
At 21 m (69 ft)	1.1	0.99	1,980
At 22 m (72 ft)	1.0	0.94	1,880
At 23 m (76 ft)	1.0	0.89	1,780
At 24 m (79 ft)	0.9	0.84	1,680
At 24.5 m (80 ft)	0.9	0.82	1,640
At 25 m (82 ft)	0.9	0.80	1,600
At 35 m (115 ft)	0.9	0.80	1,600

PERFORMANCE	Metric	US
Reach	25 m	82 ft
Max Capacity	2 tons	4,000 lb
Normal Hoisting Moment	235KNm	173,327 ft-lb
Rated Hoisting Weight at Jib Nose	0.80 tons	1,600 lb
Working Radius	3 - 25 m	9.8 - 82 ft
Ambient Temperature Working Range	-20 to 40 °C	-4 to 104°F
Max. Height	23 m	75 ft
Max. Height Jib Elevated	35 m	115 ft

Equipment specifications and images may change without notice from Rhino Equipment Group Inc.



# TOWER CRANES DIVISION



## PERFORMANCE

Hoisting Speed	Hoisting Speed		Hoisting Weight	
Working Modes	m/min	ft/min	Tons	Lb
2x Speed	6	21	2	4,000
4x Speed	25	82	1	2,000
Operating Speeds	Metric		Us	
Swing Speed	0 - 0.82 rpm			
Radius Changing Speed	20 m/min		66 ft/min	
Operating Weights			Tons	Lb
Net Weight			10.5	21,000
Ballast Weight			12.5	25,000
Total Weight (with anchoring)			23	46,000
Transport Dimensions			mm	ft
Overall Length			14,700	48,228
Overall Height			3,800	12,467
Width Over Tires			2,650	8,694
Wheelbase			5,260	17,257
From Centerline of Front Axle to Center of Trailer			2,500	8,202
From Center of Trailer to Hitch			6,100	20,013
Diameter of Swing Circle			900	2,953
From Edge of Swing Circle to End of Jib			5,730	18,799

Equipment specifications and images may change without notice from Rhino Equipment Group Inc.