



RS50-S

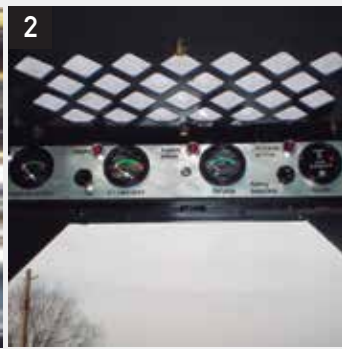
SKID STEER



Lightweight agility, heavyweight ability.



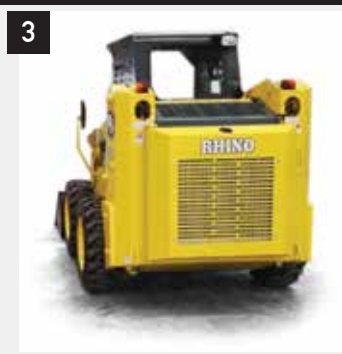
The Rhino Skid Steer Loaders are designed, built, and backed to deliver exceptional performance, versatility, ease of operation, serviceability, and customer support. The RS50-S delivers best-in-class stability, visibility, and serviceability. Lightweight and agile, yet surprisingly powerful, this highly capable compact is the perfect size for confined areas. Easy to transport between jobsites, too.



1. The cab provides a cleaner and quieter operating environment with excellent work tool visibility.
2. Easy-to-read, high-visibility gauges and warning lamps keep the operator aware of critical system information.
3. High performance power train provides maximum performance and production capability.



Compact machine, super-sized comfort.



Impressive tipping load and rated operating capacities let you master a variety of material-handling tasks.

Boom keeps the load close to the machine, close to the ground for carrying heavy loads, combined with their low center of gravity and generous ground clearance, these skid steers are productively agile.

1. The Rhino engine provides cleaner, quieter operation while delivering superior performance and durability.

2. Pin style forks are available in various tine lengths for moving loads on construction sites, handling bagged fertilizer and seed at landscaping and nursery sites.

3. Compact size and high power to weight ratio let attach hydraulic breakers and other tools, providing unsurpassed durability.



ENGINE

Emission Rating (optional)	Tier 2 (Tier 3, Tier 4)
Engine / Optional	Rhino A498BPG / Kubota V3600
Displacement L (cu. In)	3.2(195)
Net Power kW (Hp) @ 2,500 rpm	45(60) 63(84)
Max Torque Nm (ft-lb) / Optional	193(142)@1,800 / 297(219)@1,550rpm
Rated Engine Speed	2,500 rpm
Net Torque Rise / Optional	13% / 30%
Aspiration	Naturally aspirated
Air Cleaner	Dual-stage dry type with evacuator valve on filter housing for service

COOLING

Fan Type	Belt driven
----------	-------------

POWERTRAIN

Type	Hydrostatic radial piston motors, continuous loop chain	
Max. Travel Speeds with 10-16.5 Tires	Forward	Reverse
Single Speed km/h (mph)	11(7)	11(7)
Axles	Heat-treated hardened steel, one-piece forged axle shafts with oil-bath lubrication	
Final Drive	High-strength, adjustment-free chain pair in each tandem	
Brakes	Dynamic braking from hydrostatic motors	

HYDRAULICS

Max. Flow Rate L/min (gpm)	64(17)
System Pressure Mpa (psi) / Optional	16(2,321) / 216(3,129)
Hydraulic Horsepower Flow kW (Hp)	17(23)

CYLINDERS

Type	Heat-treated, chrome-plated, polished rods; hardened steel pivot pins with replaceable bushings		
	Bore mm (in)Rod	Diameter mm (in)	Stroke mm (in)
Lifting Cylinder (2)	80(3.1)	35(1.4)	680(26.8)
Bucket Cylinder (2)	80(3.1)	35(1.4)	525(20.7)

ELECTRICAL

Voltage	12
Battery Capacity	450 CCA
Alternator Amps	50
Lights	2 front, 1 rear

Equipment specifications and images may change without notice from Rhino Equipment Group Inc.

OPERATOR STATION

Type Open cab with pneumatic jacks and pivot for engine and hydraulic maintenance

TIRES/WHEELS

Standard Tire Size 10-16.5 10ply

REFILL CAPACITIES L (Gal)

Cooling System 10(3)

Engine Oil 7(2)

Chain Oil (each) 13(3)

Fuel Tank 60(16)

Hydraulic System 60(16)

OPERATING WEIGHTS kg(lb)

With Full Fuel Tank, 79 kg (175 lb) Operator, and Standard EquipmentStandard Equipment 3,100(6,834)

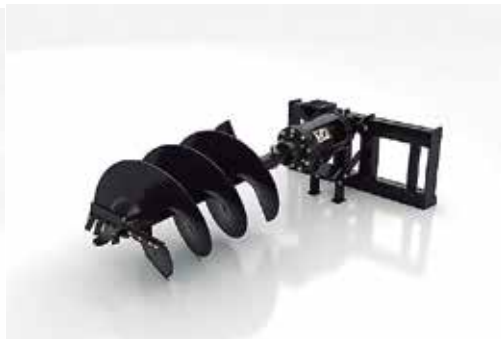
ATTACHMENTS

Rhino skid steers come standard with the hydraulic line for attachments.

Rhino hydraulic hammer match: 254SK



Forks



Augers



General purpose buckets



Hydraulic hammers



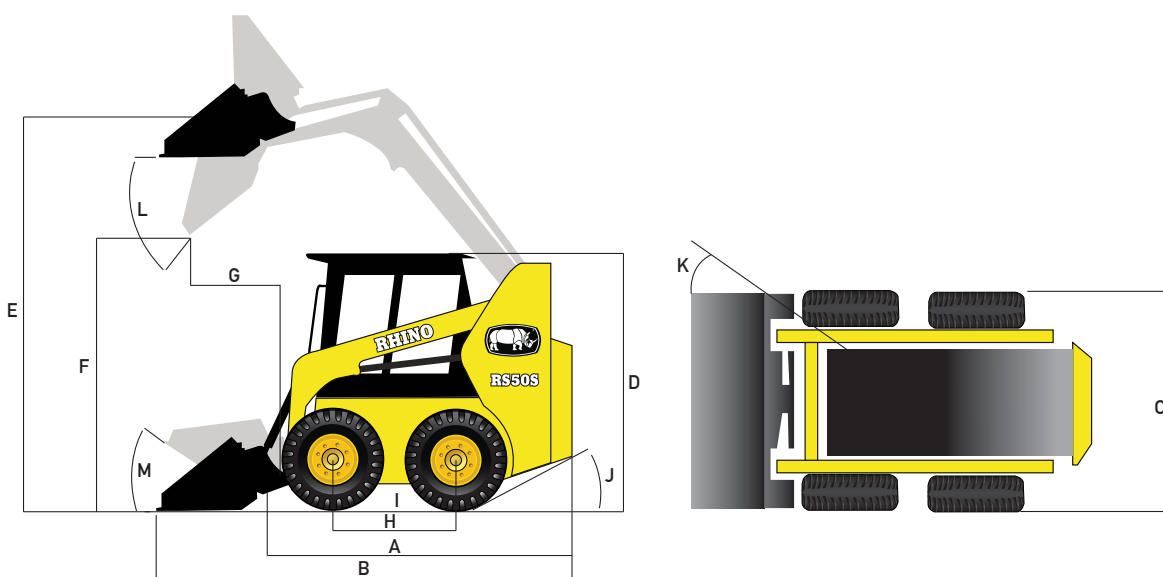
Brooms



Drum compactors

and many more...

Equipment specifications and images may change without notice from Rhino Equipment Group Inc.



DIMENSIONS

A. Length without Bucket mm (ft)	2,700(9.9)
B. Length with Standard Bucket mm (ft)	3,525(11.6)
C. Width Over Tires mm (ft)	1,720(5.6)
D. Height to Top of Cab mm (ft)	2,090(6.9)
E. Height to Hinge Pin mm (ft)	3,970(13.0)
F. Dump Height with Standard Bucket mm (ft)	2,100(6.9)
G. Dump Reach with Standard Bucket mm (ft)	750(2.5)
H. Wheelbase mm (ft)	991(3.3)
I. Ground Clearance mm (in)	210(8.3)
J. Angle of Departure	20 degrees
K. Front Turn Radius with Standard Bucket mm (ft)	2,090(6.9)
L. Dump Angle (full lift height)	45 degrees
M. Bucket Rollback at Ground Level	31 degrees
Standard Bucket Width mm (ft)	1,800(5.9)

LOADER PERFORMANCE

Tipping Load kg (lb)	1,500(3,307)
Rated Operating Capacity with Counterweight kg (lb)	1,060(2,337)
Bucket Capacity m ³ (cu. Yd)	0.47(0.61)

OPTIONAL EQUIPMENT

- Closed Cab with A/C and Heater
- Tachometer
- Service and Parking Brake
- Turn Signal Lamps
- Tier 3, Tier 4 engine

Equipment specifications and images may change without notice from Rhino Equipment Group Inc.