



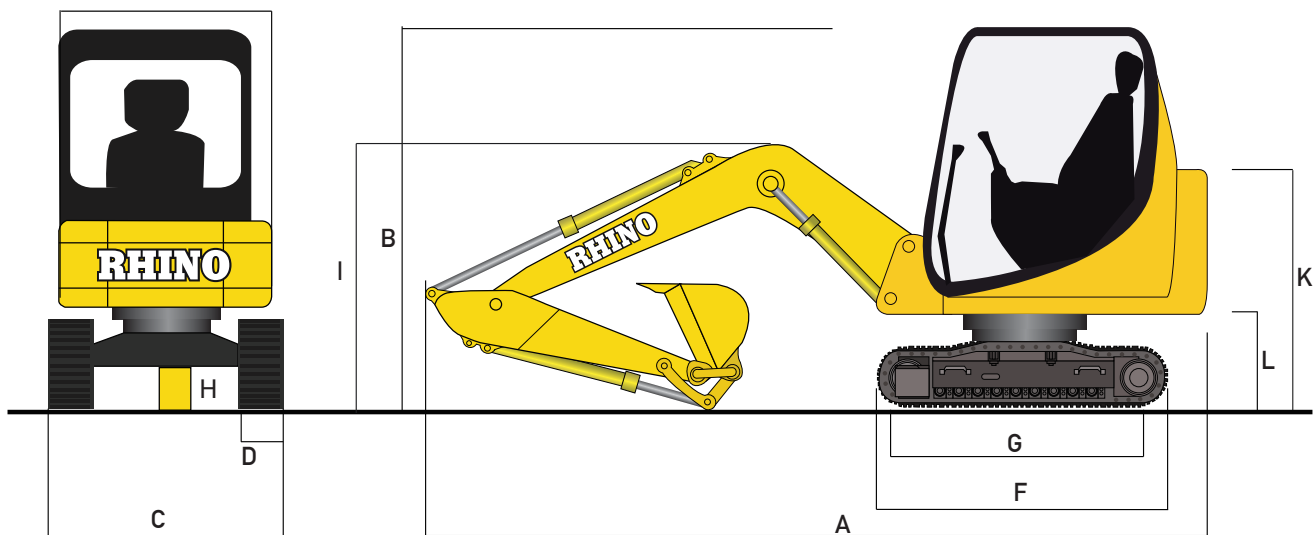
REX22

EXCAVATOR



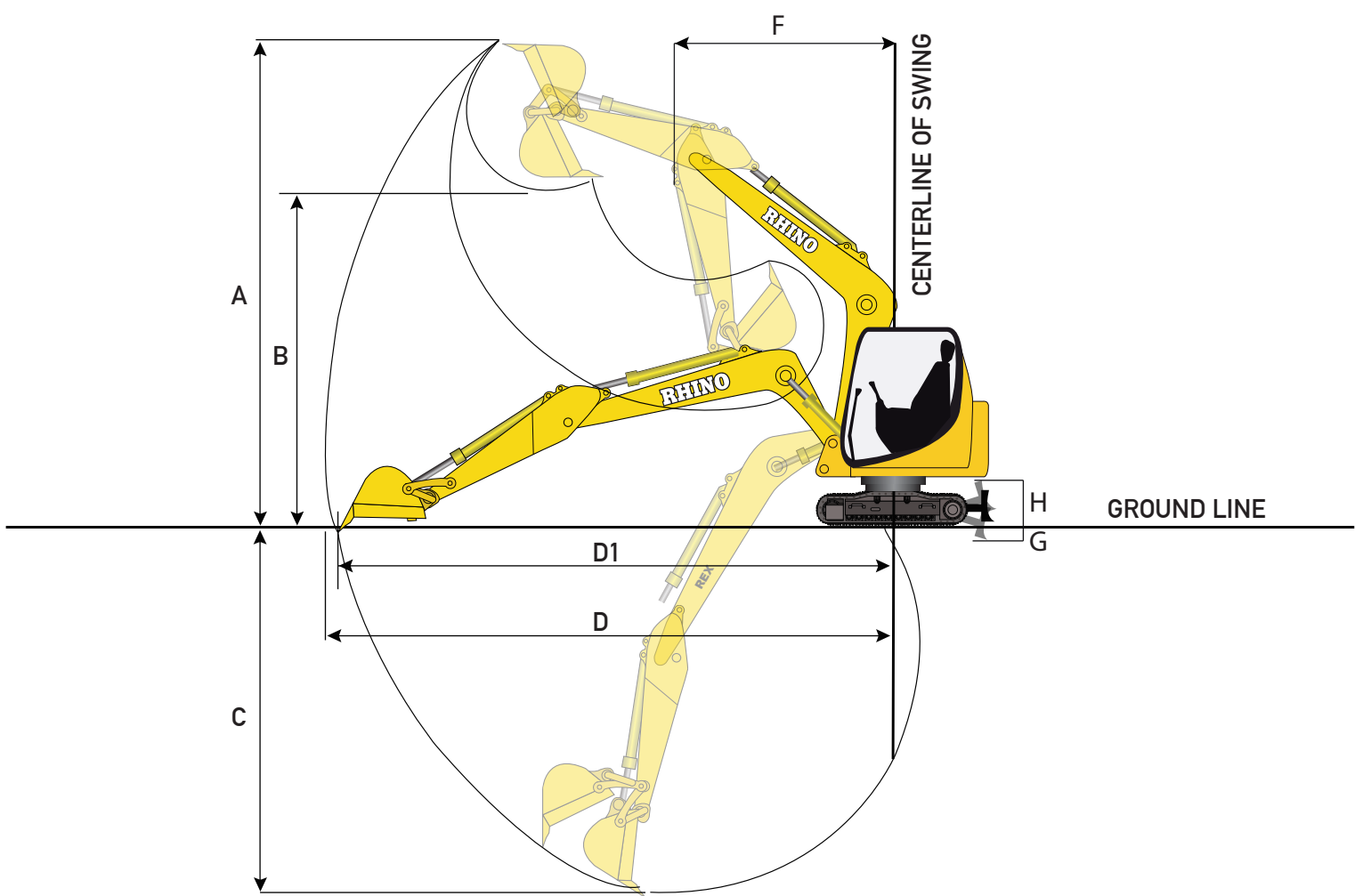
MAIN PARAMETERS

Engine (optional)	Rhino (Yanmar)
Engine power kw (hp)	20 (27)
Emissions (optional)	Tier 2 (Tier 3, Tier 4)
Rated engine speed rpm	2,200
Bucket capacity m3 (cu.Yd)	0.09 (0.12)
Hydraulic system pressure Mpa (psi)	16 (2,321)
Dosing pumps L/min (gpm)	52 (14)
Maximum digging force kN (lb)	12 (2,698)
Gradeability	30°
Ground pressure Kpa (psi)	30 (4.6)
Walking speed km/h (mph)	2.7 (1.7)
Maximum traction kN (lb)	15 (3,372)
Platform rotation speed rpm	13



DIMENSIONS

A. Total Length mm (ft)	4,120 (13.5)
B. Total Height mm (ft)	2,250 (7.4)
C. Overall width mm (ft)	1,320 (4.3)
D. Track width mm (in)	250 (9.8)
E. Platform radius of turn mm (ft)	1,290 (4.2)
F. Track Length mm (ft)	1,621 (5.3)
G. Tread mm (ft)	1,261 (4.1)
H. Height above ground mm (ft)	235 (0.8)
I. End total Height of boom mm (ft)	1,430 (4.7)
J. Wide Platform outside mm (ft)	1,130 (3.7)
K. Hood Height mm (ft)	1,280 (4.2)
L. Platform height above ground mm (in)	490 (19.3)



OPERATING RANGE

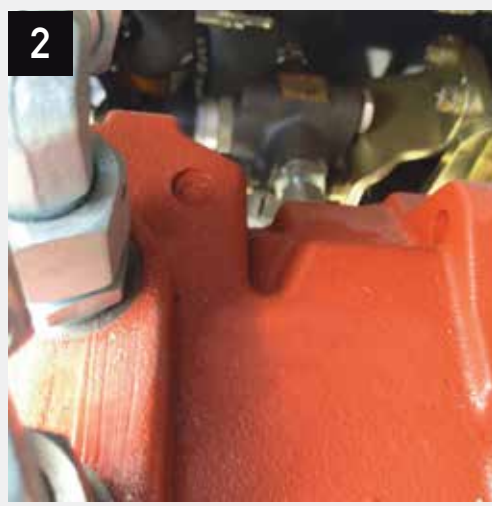
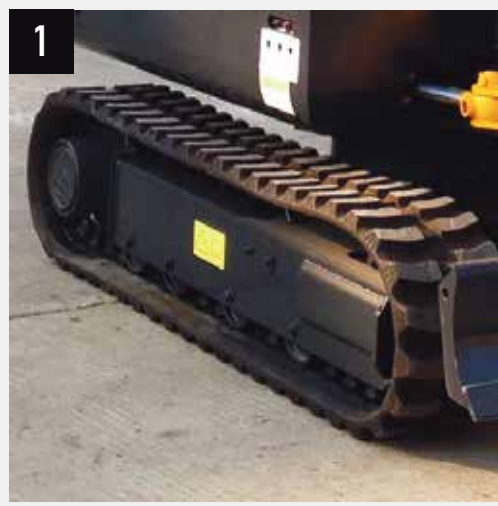
A. Maximum digging height mm (ft)	3,720 (12.2)
B. Maximum unloading height mm (ft)	2,260 (7.4)
C. Maximum digging depth mm (ft)	2,630 (8.6)
D. Maximum reach mm (ft)	4,250 (13.9)
D1. Maximum digging reach at ground level mm (ft)	4,160 (13.6)
E. Maximum digging height radius mm (ft)	2,750 (9.0)
F. Minimum turning radius mm (ft)	1,850 (6.1)
G. Maximum depth of the bucket dozer mm (ft)	250 (0.8)
H. Maximum lift height dozer mm (ft)	230 (0.8)

WEIGHT

Operating Weight kgs (lb)	2,200 (4,850)
---------------------------	---------------

Equipment specifications and images may change without notice from Rhino Equipment Group Inc.

Unprecedented precision and ease of operation.



This Rhino excavator is loaded with enhancements that not only increase productivity and uptime, but lower daily operating costs, too. A high-efficiency “on-demand” cooling system, advanced multifunction monitor, and productivity modes to allow you to choose your digging style headline the long list of advances.

1. The standard rubber track lets you work on multiple surfaces such as grass, pavement or stone without damaging the surface or machine.
2. Generous flow, and swing torque help speed cycles. So you can do your best to stay on schedule or ahead of the weather.
3. Reliable and durable Yanmar diesel engine, more efficient with low maintenance costs.

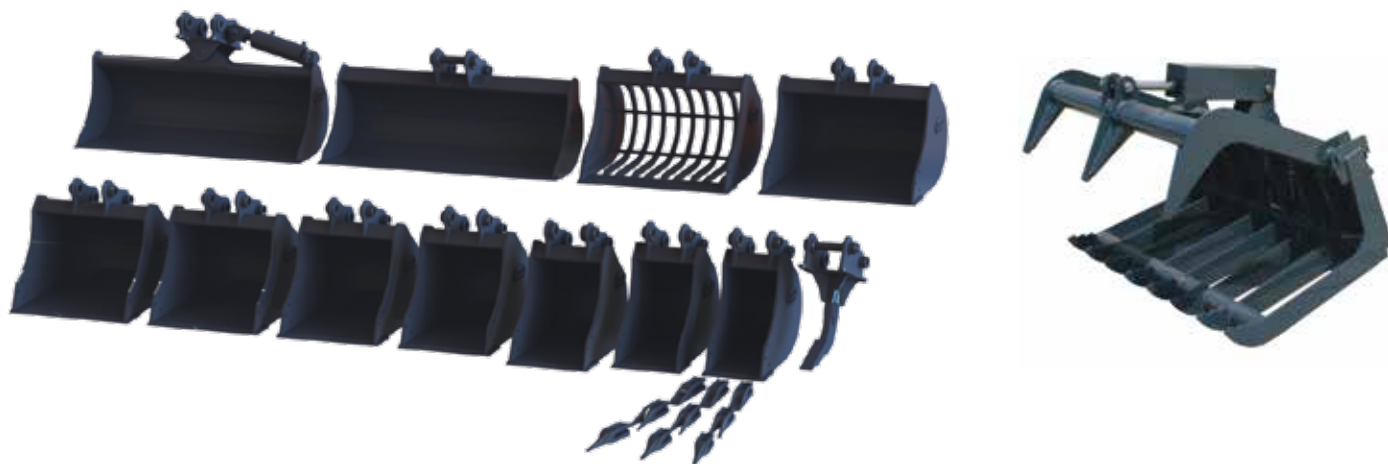
OPTIONS

Rhino Excavators can come with different options like: Tier2, Tier3, Tier4 Engine, Close cab, Rock bucket, Trench bucket, Thumb cutters, and many more according to work requirements.

ATTACHMENTS

Rhino Excavators come standard with the hydraulic line for attachments.

Rhino hydraulic hammer match: 254SK



Many options buckets



Hydraulic hammers



Trenchers



Augers

and many more...

Equipment specifications and images may change without notice from Rhino Equipment Group Inc.