



**RD55**

**BULLDOZER**



# Best-in-class access to service and maintenance points for maximum uptime



Rhino Dozers combine incredible versatility to handle a wide range of jobs with innovations that help you do those jobs better, faster and more efficiently. These crawler dozers are ideal for residential construction performing such tasks as clearing and grading lots, sloping the sides of roads, back-filling, and final grade work for landscaping and driveway construction.



1. Standard high-back seat and lower cushion adjust multiple ways for daylong comfort and support.
2. Easy-to-read, high-visibility gauges and warning lamps keep the operator aware of critical system information.
3. Speed travel can also be varied to fit specific applications, terrain conditions, or operating preferences.

## ENGINE

Make/ Engine Model	Cummins / QSK19
Emission (optional)	Tier 2 (Tier 3, Tier 4)
Cylinders	6
Displacement L (cu. In)	19(1,159)
Net Power kW (Hp) @ 1,800 rpm	388(520)
Gross Power kW (Hp) @ 1,800 rpm	392(526)
Net Peak Torque Nm (lb-ft) @ 1,200 rpm	2,206(1,627)
Fuel System	Direct Injection
Aspiration	Turbocharged, charge air cooled
Air Cleaner	Under-hood, dual element dry type, restriction indicator on filter housing for service

## COOLING

Fan Drive	Hydraulically driven
-----------	----------------------

## TRANSMISSION

Type	Powershift, planetary gear and multiple disc clutch, hydraulically actuated; tracks are moved by a central spiral-bevel gear to provide instant power; gear selection lever with linkage mechanism; engine speed lever and decelerator pedal to control ground speed	
------	--	--

System Pressure Mpa (psi)	10(1,450)
---------------------------	-----------

Maximum Travel Speeds	Forward	Reverse
1st Gear km/h (mph)	3.8(2.4)	5.1(3.2)
2nd Gear km/h (mph)	6.8(4.2)	9.2(5.7)
3rd Gear km/h (mph)	11.8(7.3)	15.8(9.8)

Steering	Individual levers to control each track to provide precision steering; Steering clutch provides immediate response to the operator
----------	--

Final Drives	Double reduction final drives mounted enclosed and isolated to protect them from shocks and debris
--------------	--

Drawbar Pull kN (lb)	
Maximum	990(222,561)

Service Brakes	Dynamic braking when decelerator pedal is actuated; brake pedal actuation, hydraulically activated drums on each track for instant stop and reliability.
----------------	--

Parking Brake	Manually activated
---------------	--------------------

## HYDRAULICS

Type	Gear pump
Pressure Mpa (psi)	25(3,626)
Max. Flow L/min (gpm)	300(79)
Control	Lever control for blade with float mode; lever control for ripper

## ELECTRICAL

Voltage	24 Volts
Alternator Rating	35A
Lights	2 Front lights, 2 Rear lights

## UNDERCARRIAGE

Track Gauge mm (in)	2,500(98.4)
Grouser Width mm (in)	610(24.0)
Chain	Sealed and lubricated
Shoes, Each Side	40
Track Rollers, Each Side	7
Track Length on Ground mm (in)	3,940(155.1)
Ground Contact Area cm <sup>2</sup> (sq.in)	48,068(7,451)
Ground Pressure Mpa (psi)	0.14(20.3)
Track Pitch mm (in)	280(11.0)
Operator Station	ROPS and FOPS

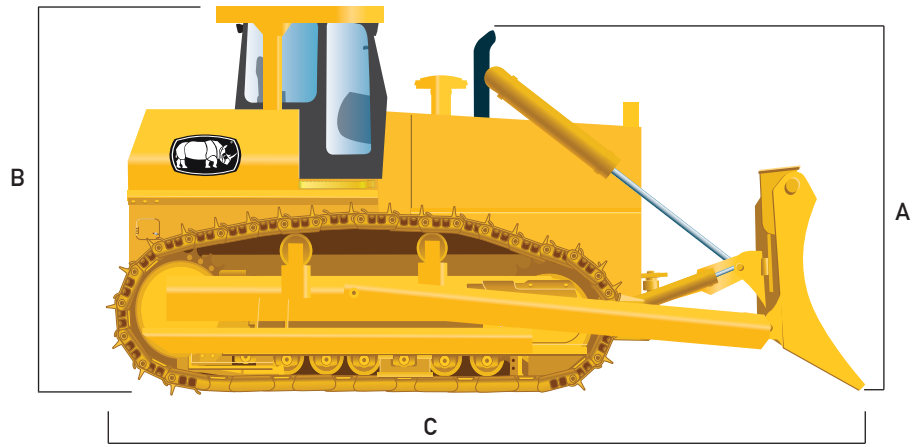
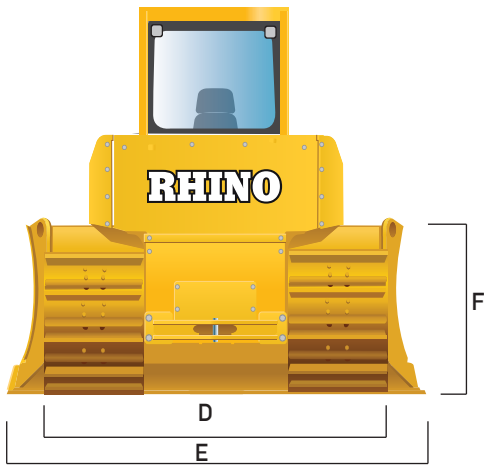
## REFILL CAPACITIES L (gal)

Fuel Tank	1000(264)
Cooling System	130(34)
Engine Oil	75(20)
Transmission Fluid	200(53)
Hydraulic Tank	300(79)
Final Drive Case (for both)	150(40)

## OPERATING WEIGHTS

Blade Type	Semi-U	Angle
Base Weight kg(lb)	61,500(135,584)	60,300(132,939)
Weight with 3-Shank Ripper kg(lb)	67,500(148,812)	66,300(146,166)

Equipment specifications and images may change without notice from Rhino Equipment Group Inc.



## MACHINE DIMENSIONS

Blade Type	Semi-U	Angle
A. Height to Top of Exhaust Stack mm (ft)	4,230(13.9)	4,230(13.9)
B. Height to Top of Cab mm (ft)	4,470(14.7)	4,470(14.7)
C. Overall Length mm (ft)	7,530(24.7)	7,530(24.7)
D. Width Over Track mm (ft)	4,680(15.4)	4,680(15.4)
E. Blade Width mm (ft)	4,695(15.4)	5,030(16.5)
F. Blade Height mm (ft)	2,265(7.4)	1,950(6.4)
Tread Depth with Single-Bar Grouser mm (in)	90(3.5)	90(3.5)
Ground Clearance in Dirt mm (in)	600(23.6)	600(23.6)
Length With Ripper mm (ft)	10,420(34.2)	10,420(34.2)
Blade Lift Height mm (in)	1,660(65.4)	1,750(68.9)
Blade Digging Depth mm (in)	720(28.3)	730(28.7)
Blade Cutting-Edge Angle	55 degrees	55 degrees
Blade Capacity m3 (cu. Yd)	18.5(24.2)	18(23.5)
Blade Angle	-	45 degrees
Blade Tilt mm (in)	1,100(43.3)	1,100(43.3)
Minimum Turning Radius mm (ft)	4,500(14.8)	4,500(14.8)
Gradeability	30 degrees	30 degrees

## RIPPER

Single or Multi-shank (3) parallelogram ripper with hydraulic pitch adjustment and replaceable tips

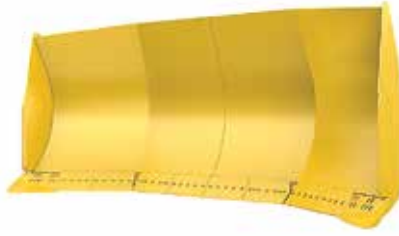
Weight kg (lb)	6,000(13,228)
Max. Penetration mm (in)	1,435(56.5)
Max. Clearance Under Tip mm (in)	1,105(43.5)
Overall Length Lowered Position mm (in)	3,350(131.9)
Slope Angle (full raise)	24 degrees

Equipment specifications and images may change without notice from Rhino Equipment Group Inc.

## BLADES



Angle Blade



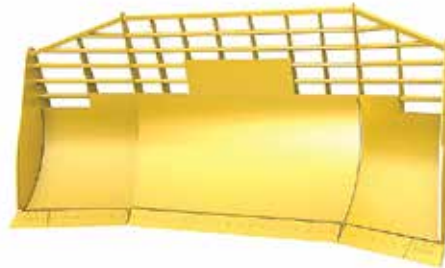
U Blade



Semi U Blade



Straight Blade



Waste Blade



1 shank ripper

3 shank ripper



Rippers

The attachments shown are for reference only; the final product may be different from the images shown.

## OPTIONS

Rhino Dozers can come with PAT blades, material handling blades, Tier 3, Tier 4 engine, and many other custom options according to client requests

Dozer base operating information is based on machine with identified linkage and standard equipment, standard shoes, full fuel tank, and 79-kg (175 lb.) operator. This information is affected by changes in shoes, blade, and different attachments.

Equipment specifications and images may change without notice from Rhino Equipment Group Inc.