



RD13

BULLDOZER



Best-in-class access to service and maintenance points for maximum uptime



Rhino Dozers combine incredible versatility to handle a wide range of jobs with innovations that help you do those jobs better, faster and more efficiently. These crawler dozers are ideal for residential construction performing such tasks as clearing and grading lots, sloping the sides of roads, back-filling, and final grade work for landscaping and driveway construction.



1. Standard high-back seat and lower cushion adjust multiple ways for daylong comfort and support.
2. Easy-to-read, high-visibility gauges and warning lamps keep the operator aware of critical system information.
3. Speed travel can also be varied to fit specific applications, terrain conditions, or operating preferences.

ENGINE		
Make/ Engine Model	Rhino / LR6A3Z-20	
Emissions (optional)	Tier 2 (Tier 3, Tier 4)	
Cylinders	6	
Displacement L (cu. In)	6.0(366)	
Net Power kW (Hp) @ 2,000 rpm	93(125)	
Net Peak Torque Nm (lb-ft) @ 1,500 rpm	410(302)	
Fuel System	Direct Injection	
Aspiration	Turbocharged, charge air cooled	
Air Cleaner	Under-hood, dual element dry type, restriction indicator on filter housing for service	
COOLING		
Fan Drive	Belt driven	
TRANSMISSION		
Type	Powershift, planetary gear and multiple disc clutch, hydraulically actuated; tracks are moved by a central spiral-bevel gear to provide instant power; gear selection lever with linkage mechanism; engine speed lever and decelerator pedal to control ground speed	
System Pressure Mpa (psi)	2(290)	
Maximum Travel Speeds	Forward	Reverse
1st Gear km/h (mph)	2.4(1.5)	3.8(2.4)
2nd Gear km/h (mph)	5(3.1)	4.5(2.8)
3rd Gear km/h (mph)	7.6(4.7)	5.3(3.3)
4rd Gear km/h (mph)	10.6(6.6)	6.6(4.1)
5th Gear km/h (mph)	7.0(4.3)	
Steering	Individual levers to control each track; Steering clutch provides immediate response	
Final Drives	Double reduction final drives mounted enclosed and isolated to protect them from shocks and debris	
Drawbar Pull kN (lb)		
Maximum	115(25,853)	
At 2.0 km/h (1.2 mph)	66(14,837)	
At 6.0 km/h (3.7 mph)	40(8,992)	
Service Brakes	Dynamic braking when decelerator pedal is actuated; brake pedal actuation, hydraulically activated drums on each track for instant stop and reliability.	
Parking Brake	Manually activated	

Equipment specifications and images may change without notice from Rhino Equipment Group Inc.

HYDRAULICS

Type	Gear pump	
Pressure Mpa (psi)	20(2,901)	
Max. Flow L/min (gpm)	80(21)	
Control	Lever control for blade with float mode; lever control for ripper	

ELECTRICAL

Voltage	24 Volts	
Alternator Rating	50A	
Lights	2 Front lights, 2 Rear lights	

UNDERCARRIAGE

Track Gauge mm (in)	1,700(66.9)	
Grouser Width mm (in)	500(19.7)	
Chain	Sealed and lubricated	
Shoes, Each Side	44	
Track Rollers, Each Side	5	
Track Length on Ground mm (in)	2,550(100.4)	
Ground Contact Area cm ² (sq.in)	25,500(3,953)	
Ground Pressure Mpa (psi)	51(7,397)	
Track Pitch mm (in)	160(6.3)	
Operator Station	ROPS and FOPS	

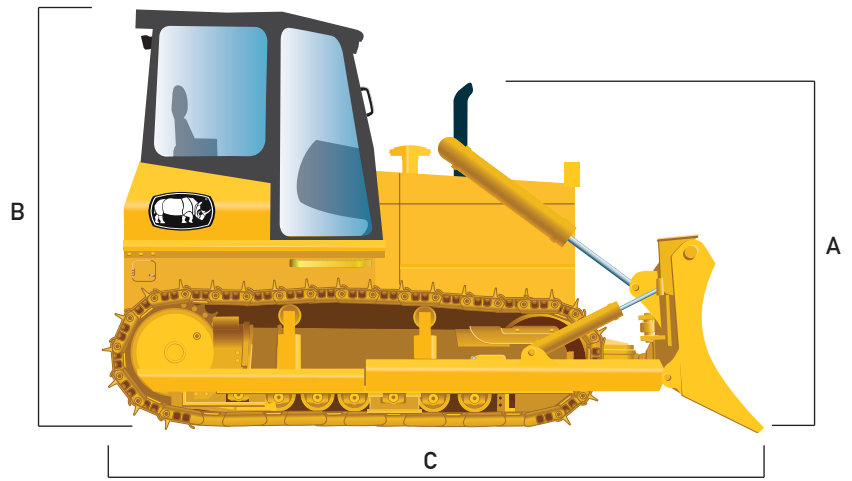
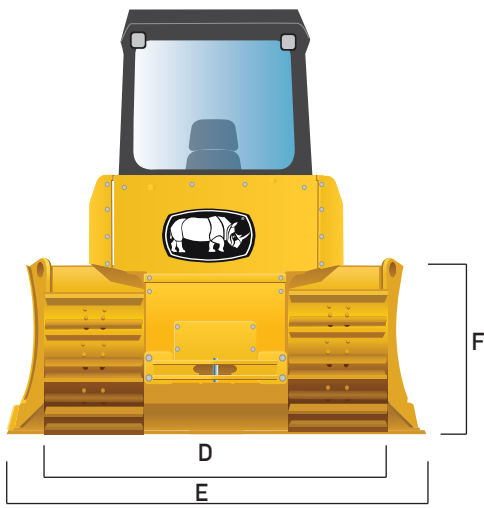
REFILL CAPACITIES L (gal)

Fuel Tank	290(77)	
Cooling System	31(8)	
Engine Oil	20(5)	
Transmission Fluid	65(17)	
Hydraulic Tank	55(15)	
Steering	60(16)	
Final Drive Case (for both)	15(4)	

OPERATING WEIGHTS

Blade Type	Straight-tilt	Angle
Base Weight kg(lb)	13,000(28,660)	12,800 (28,219)
Weight with 3-Shank Ripper kg(lb)	14,050(30,975)	13,850(30,534)

Equipment specifications and images may change without notice from Rhino Equipment Group Inc.



MACHINE DIMENSIONS

Blade Type	Straight-tilt	Angle
A. Overall Height to Top of Exhaust mm (ft)	3,020(9.9)	3,020(9.9)
B. Height to Top of Cab mm (ft)	3,230(10.6)	3,230(10.6)
C. Overall Length mm (ft)	4,535(14.9)	4,535(14.9)
D. Width Over Track mm (ft)	2,200(7.2)	2,200(7.2)
E. Blade Width mm (ft)	3,135(10.3)	3,450(11.3)
F. Blade Height mm (ft)	1,060(3.5)	970(3.2)
Tread Depth with Single-Bar Grouser mm (in)	60(2.4)	60(2.4)
Ground Clearance in Dirt mm (in)	370(14.6)	370(14.6)
Length With Ripper mm (ft)	5,635(18.5)	5,635(18.5)
Blade Lift Height mm (in)	894(35.2)	900(35.4)
Blade Digging Depth mm (in)	400(15.7)	400(15.7)
Blade Cutting-Edge Angle	35 degrees	35 degrees
Blade Capacity m3 (cu. Yd)	3.0(3.9)	3.2(4.2)
Blade Angle	---	45 degrees
Blade Tilt mm (in)	430(16.9)	430(16.9)
Gradeability	20 degrees	20 degrees

RIPPER

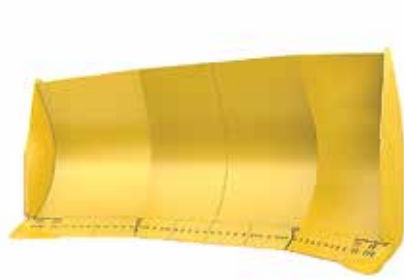
Single or Multi-shank (3) parallelogram ripper with hydraulic pitch adjustment and replaceable tips

Weight kg (lb)	1,050(2,315)
Max. Penetration mm (in)	460(18.1)
Max. Clearance Under Tip mm (in)	635(25.0)
Overall Length Lowered Position mm (in)	1,300(51.2)
Slope Angle (full raise)	24 degrees

BLADES



Angle Blade



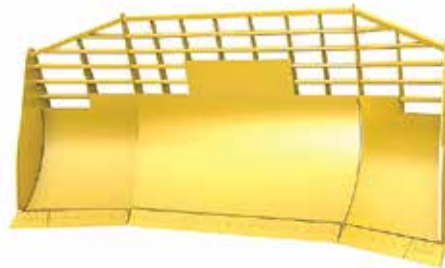
U Blade



Semi U Blade



Straight Blade



Waste Blade



1 shank ripper

3 shank ripper

Rippers

The attachments shown are for reference only; the final product may be different from the images shown.

OPTIONS

Rhino Dozers can come with PAT blades, material handling blades, and many other custom options according to client requests.

Tier 3, Tier 4 engine.

Dozer base operating information is based on machine with identified linkage and standard equipment, standard shoes, full fuel tank, and 79-kg (175 lb.) operator. This information is affected by changes in shoes, blade, and different attachments.