

RADT30

RADT40

RADT60



**ARTICULATED
DUMP TRUCKS**



Rhino Equipment developed the concept of the articulated truck.

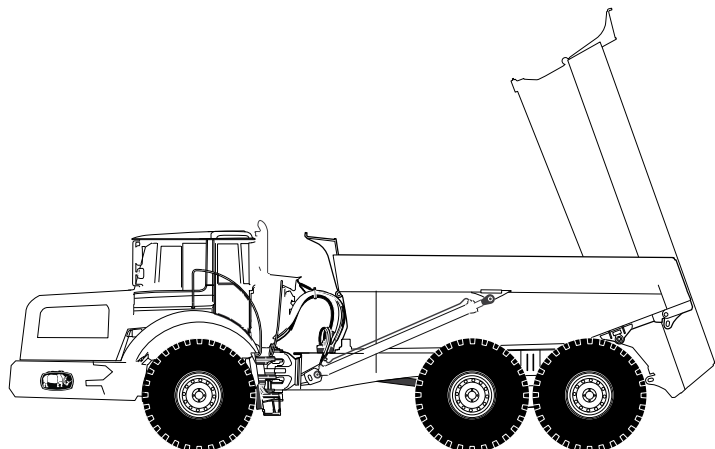
Around the globe, we're still the undisputed leader of articulated hauling in the most demanding conditions, terrain and applications. Simple, easy operation and automotive style comfort along with combined service points and extended service intervals means more focus on the work to be done, more time on the job, less time and money spent on servicing.

With heavy-duty front and rear frames designed for severe off-road operation and long service life, these machines have the quality, reliability and durability that you expect from Rhino.

RADT30

RADT40

RADT60



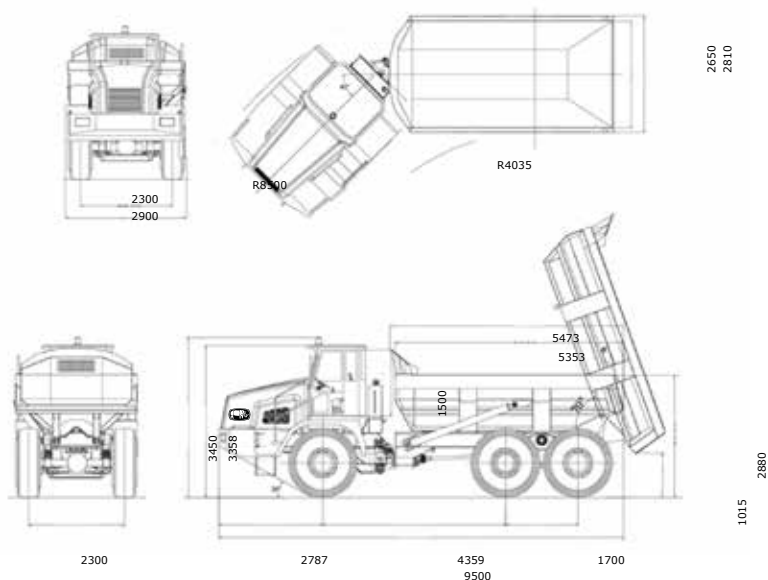
ARTICULATED DUMP TRUCKS

RADT30



SPECIFICATIONS

Carga Útil (kg)	30,000 (66,139)
Peso Vacio (kg)	20,000 (44, 093)
Peso Bruto (kg)	50,000 (110,231)
Tracción	6x6
Velocidad (km/h)	55 (35)
Pendiente Superable (Grados)	43
Angulo de Giro (Grados)	45
Chasis	Constructed from high strength steel large U section stiffeners and a high tensile floor,ruber cushion between body and frame
Dimensión de Volco (m3)	13.9 (18.1)
L x W x H mm (in)	9,500 x 2,900 x 3,450 (374 x 114 x 136)
Motor	Cummins M11-C330 (optional Rhino 6650)
Emissiones (opcional)	Tier 2 (Tier 3, Tier 4)
Potencia kw (hp) @ 2100 rpm	330(443)
Max. Torque (ft-lb) @ 1,400 rpm	1,704(1,257)
Transmision	ZF 6WG260-RADT30
Caja de Velocidades	Automatic
Frenos	Dual circuit air over hydraulic disc brake
Tiempo de elevación de volco (s)	12
Angulo de elevación de volco (grados)	70
Cabina	ROPS&FOPS
Llantas	750/65R25, 23.5R25
Sistema eléctrico (V)	24



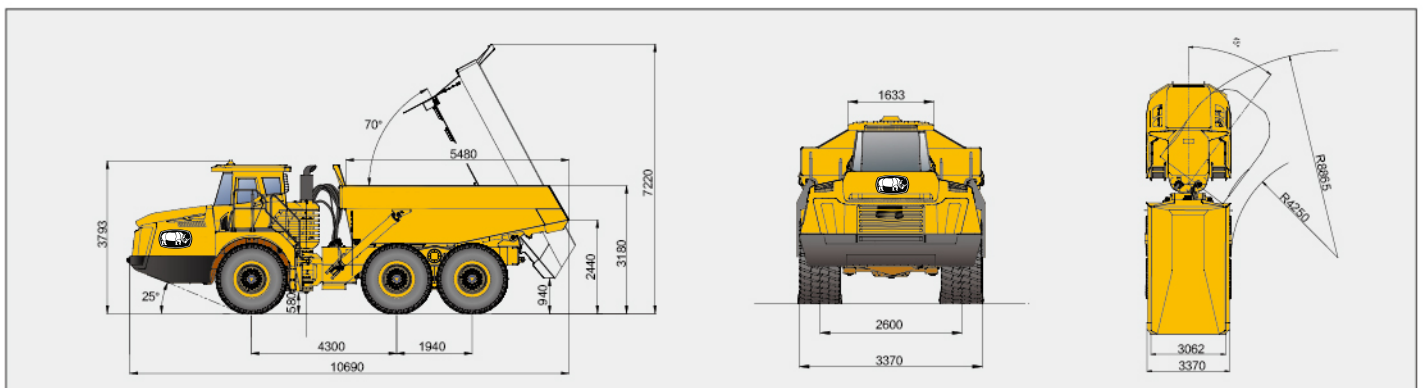
ARTICULATED DUMP TRUCKS

RADT40



SPECIFICATIONS

Payload kg (lbs)	39,000 (85,980)
Empty Weight kg (lbs)	34,000 (74,957)
Gross Vehicle Weight kg (lbs)	73,000 (160,937)
Drive Style	6x6
Max. Speed km/h (mph)	60 (38)
Max. Gradeability (Degrees)	45
Max. Steering Angle (Degrees)	45
Body Struck m ³ (cu.yd)	17.5/18.5 (22.9 / 24.2)
Body Headped m ³ (cu.yd)	22.9/24 (29.9 / 32)
L x W x H mm (in)	10,690 x 3,370 x 3,793 (420 x 132 x 149)
Engine Model	Cummins or Rhino 6060
Emissions (optional)	Tier 2 (Tier 3, Tier 4)
Rated Power kW (Hp) @ 1,800 rpm	350 (470)
Max. Torque Nm (ft-lb) @ 1,300 rpm	2,300 (1,696)
Transmission	ZF 8EP420-RADT40
Speed range	Eight forward and four reverse gears
Brake System	Wet disc brakes
Hoist Time (seconds)	12
Hoist Angle (Degrees)	70
Cab	ROPS&FOPS
Tires	29.5R25
Electrical System (V)	24



ARTICULATED DUMP TRUCKS

RADT60



SPECIFICATIONS

Payload kg (lbs)	60,000 (132,277)
Empty Weight kg (lbs)	48,000 (105,821)
Gross Vehicle Weight kg (lbs)	108,000 (238,099)
Drive Style	6xN(N=2~6)
Max. Speed km/h (mph)	45 (28)
Max. Gradeability (Degrees)	26
Max. Steering Angle (Degrees)	45
Body Struck m ³ (cu.yd)	31 (40.5)
Body Headped m ³ (cu.yd)	38 (49.7)
L x W x H mm (in)	12,610 x 4,085 x 4,320 (496 x 160 x 170)
Engine Model	Cummins QSK19 or Rhino 6065
Emissions (optional)	Tier 2 (Tier 3, Tier 4)
Rated Power kW (Hp) @ 2,100 rpm	522 (700)
Max. Torque Nm (ft-lb) @ 1,500 rpm	2,118 (1,562)
Transmission	AC drive system, with steepless speed regulation
Speed range	Fully hydraulic controlled dry disc brakes
Brake System	Wet disc brakes
Hoist Time (seconds)	16
Hoist Angle (Degrees)	68
Cab	ROPS&FOPS
Tires	875/65R29
Electrical System (V)	24

